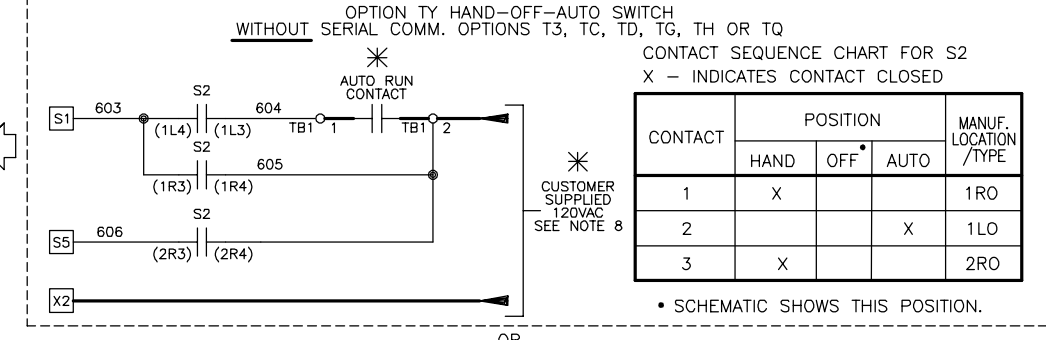
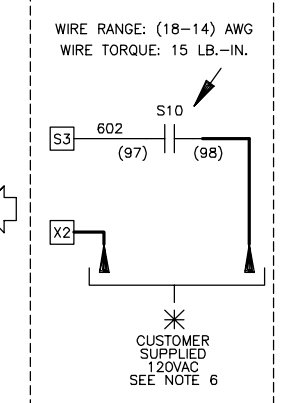
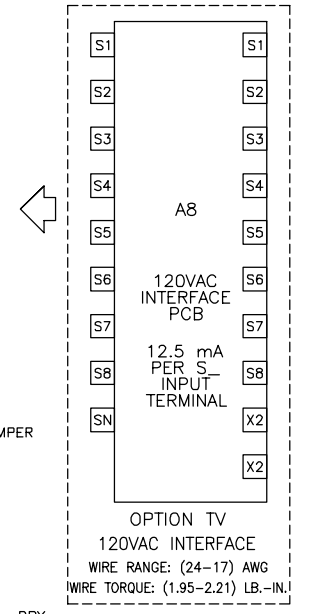
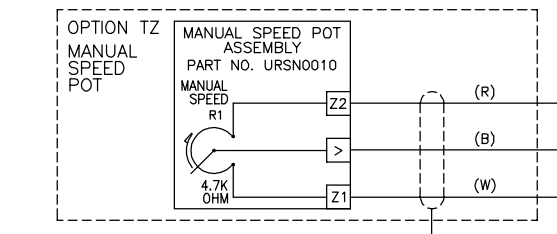
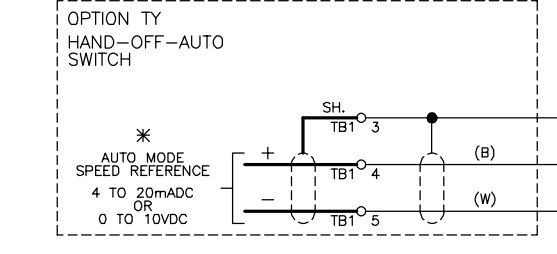


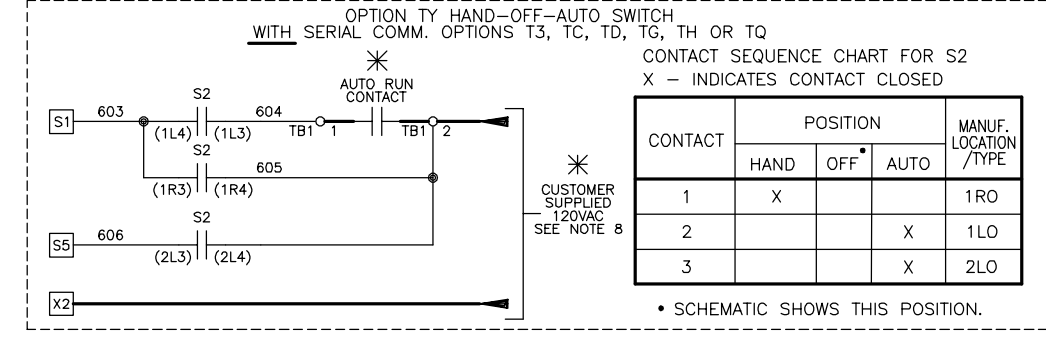
INPUT VOLTS	TERMINALS		JUMPER LOCATION
	A	B	
460/480	(H1)	(H4)	(H2) TO (H3)

NOTES:

- CUSTOMER TO CONNECT FIELD GROUND WIRING TO THE CABINET GROUND LUG.
- CONDUIT FITTINGS/HUBS SHALL COMPLY WITH THE 'STANDARD FOR CONDUIT, TUBING, AND CABLE FITTINGS, UL 514B', OR CONDUIT FITTINGS HAVING THE SAME ENVIRONMENTAL RATING AS THE ENCLOSURE SHALL BE USED.
- WITHOUT THE DISCONNECT SWITCH OPTION PD, THE DISCONNECT MEANS MUST BE SUPPLIED BY THE CUSTOMER.
- BRANCH CIRCUIT PROTECTION TO BE SUPPLIED BY THE CUSTOMER WHEN NOTED ON THE CABINET DATA NAMEPLATE.
- INSULATED TWISTED SHIELDED WIRE IS REQUIRED. SHIELD TO CONNECT TO PROPER TERMINALS AS SHOWN. CONNECT THE SHIELD ONLY AT THIS END. STUB AND ISOLATE THE OTHER END. DO NOT RUN THESE WIRES IN THE SAME CONDUIT AS THE AC POWER AND AC CONTROL WIRES. KEEP ALL WIRING UNDER 50m IN LENGTH.
- IF AC MOTOR IS FURNISHED WITH A N.C. THERMAL SWITCH THEN SET DRIVE PARAMETER H1-08 TO 27. THIS WILL CAUSE THE DRIVE TO COAST TO STOP UPON A AC MOTOR THERMAL FAULT. ALONG WITH THIS, ADD THE FOLLOWING CUSTOMER WIRING: WIRE THE N.C. THERMAL SWITCH BETWEEN DRIVE TERMINALS S8 AND SN, AS PER NOTE 5 ABOVE.
- OPTIONS T3, TC, TD, TG, TH OR TQ CONTROL (SEE UDE00579 OR UDE00600 FOR MORE INFORMATION):  
 OPTION T3 = MPE CARD  
 OPTION TC = PROFINET  
 OPTION TD = ETHERNET/IP  
 OPTION TG = DEVICENET  
 OPTION TH = PROFIBUS  
 OPTION TQ = ETHERNET MODBUS TCP/IP
- CUSTOMER MUST PROVIDE PROPER SHORT CIRCUIT PROTECTION AND MEANS OF DISCONNECT.

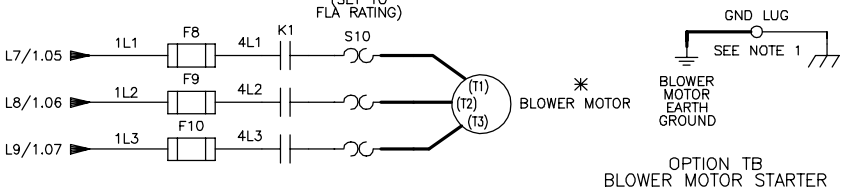


CONTACT	POSITION			MANUF. LOCATION /TYPE
	HAND	OFF	AUTO	
1	X			1RO
2			X	1LO
3	X			2RO



CONTACT	POSITION			MANUF. LOCATION /TYPE
	HAND	OFF	AUTO	
1	X			1RO
2			X	1LO
3			X	2LO

BLOWER MOTOR		
FLA RATING	FOR GA800 CONFIG.	
	AMPS	VOLTS
3.0	720 - 1090	480



\* - INDICATES COMPONENTS NOT SUPPLIED BY YASKAWA.  
 - - INDICATES CUSTOMER WIRING.  
 --- CONNECTED TO THE CABINET OR PANEL.

DRAWINGS		
TYPE	CUSTOMER CONNECTION	DRIVE PARAMETER SETTINGS
TYPE 1	UDE00575	UDE00579
TYPE 12	UDE00599	UDE00600

REVISIONS				
REV.	DESCRIPTION	ECD #	DRAWN BY	DATE
00	INITIAL RELEASE	---	KAP	3/19/24

**YASKAWA**

THIS DOCUMENT AND INFORMATION CONTAINED IN IT ARE CONFIDENTIAL, AND CANNOT BE COPIED OR DISCLOSED IN WHOLE OR IN PART WITHOUT THE EXPRESS WRITTEN CONSENT OF YASKAWA AMERICA INC.

DRAWN BY: K. PEOPLES	DATE: 3/19/24	TITLE: SCHEMATIC DIAGRAM GA800 CONFIGURED HEAVY DUTY RATING TYPE 1 AND 12
CHECKED: K. MALUSIC	DATE: 3/20/24	
APPROVED: R. JENSEN	DATE: 3/21/24	
ORIGINAL DESIGN: K. PEOPLES	DATE: 3/19/24	

SIZE: D REVISION: 00 PAGE: 1 of 1  
 DRAWING #: DS.G8C112.04