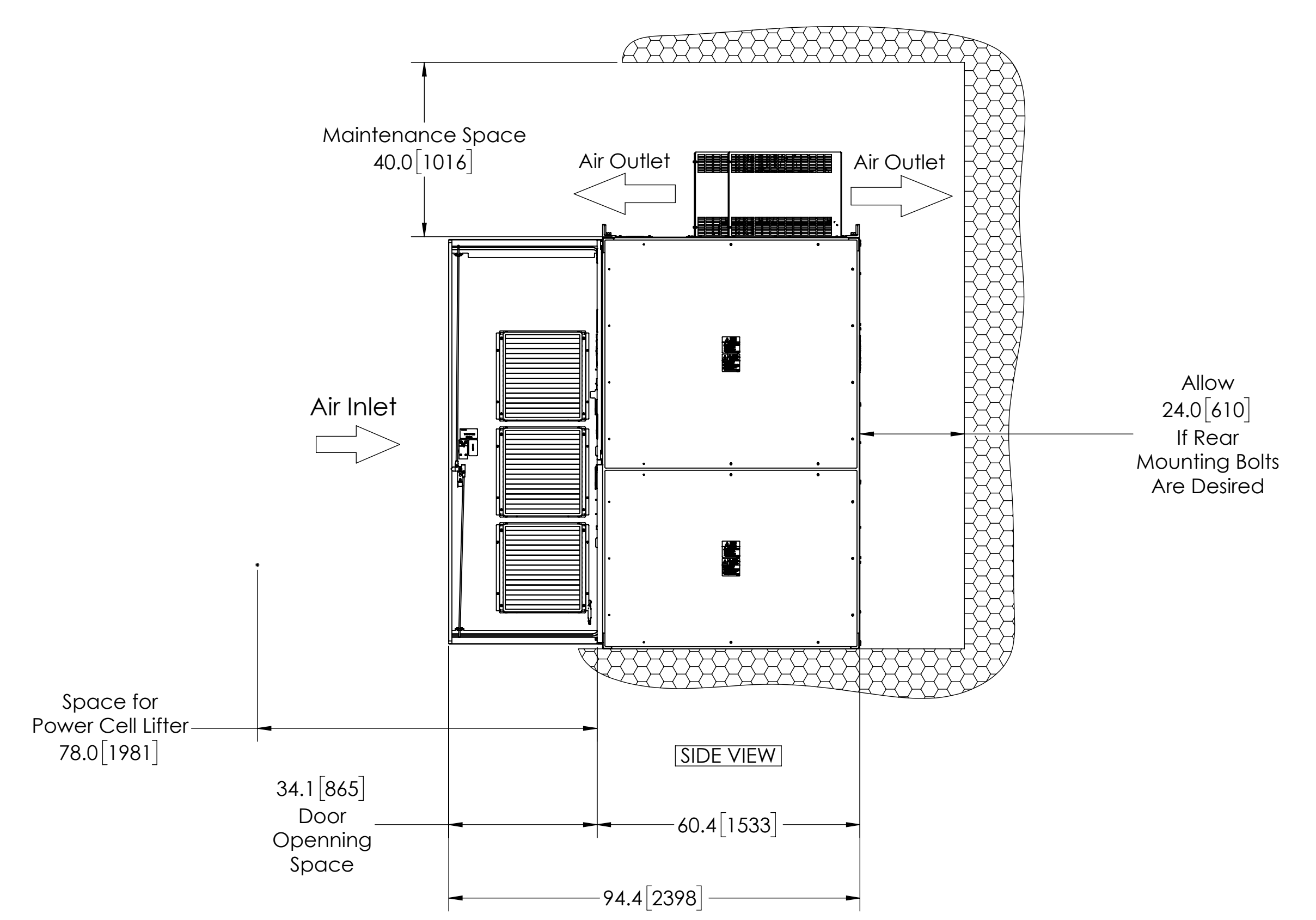
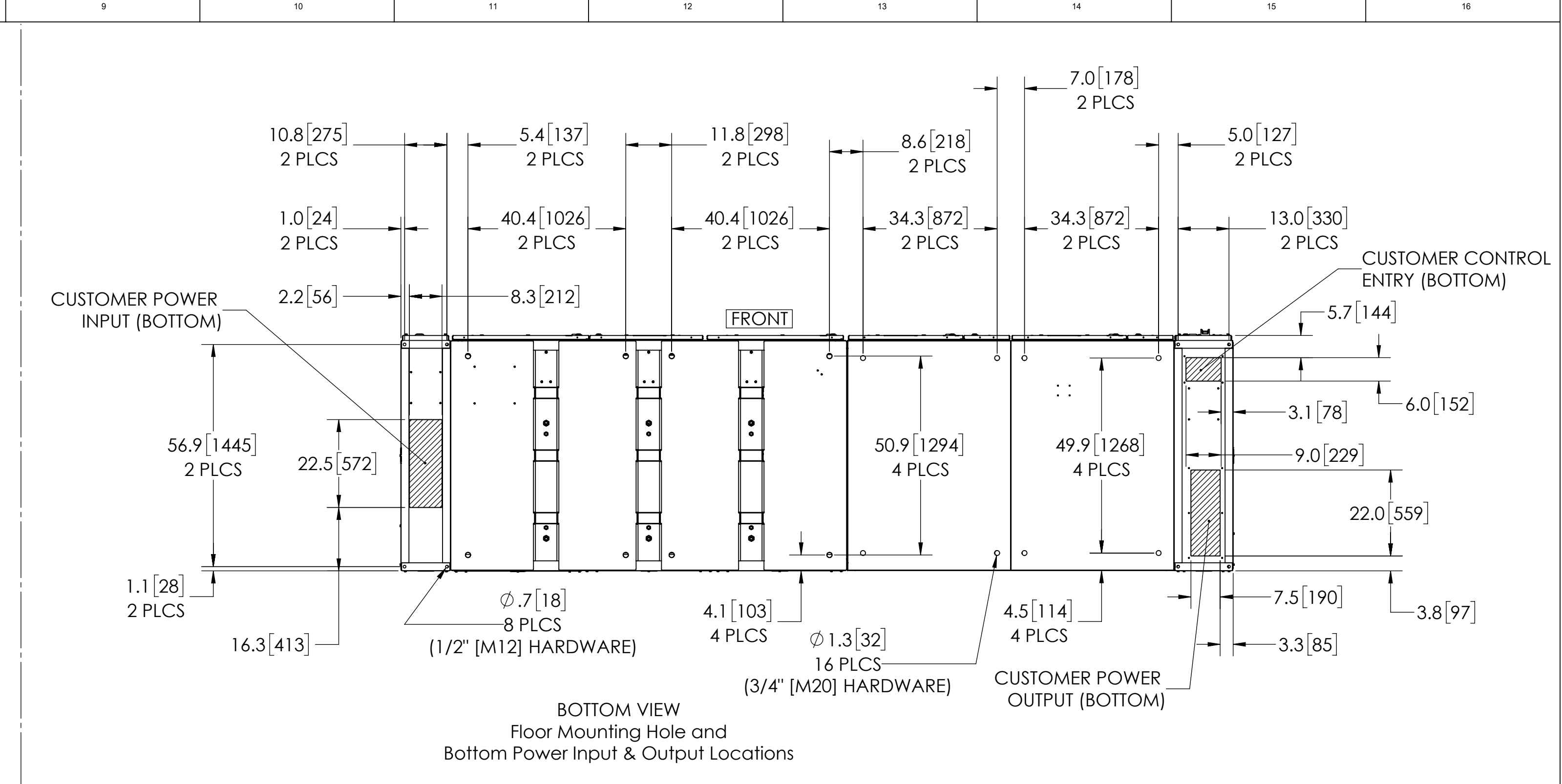
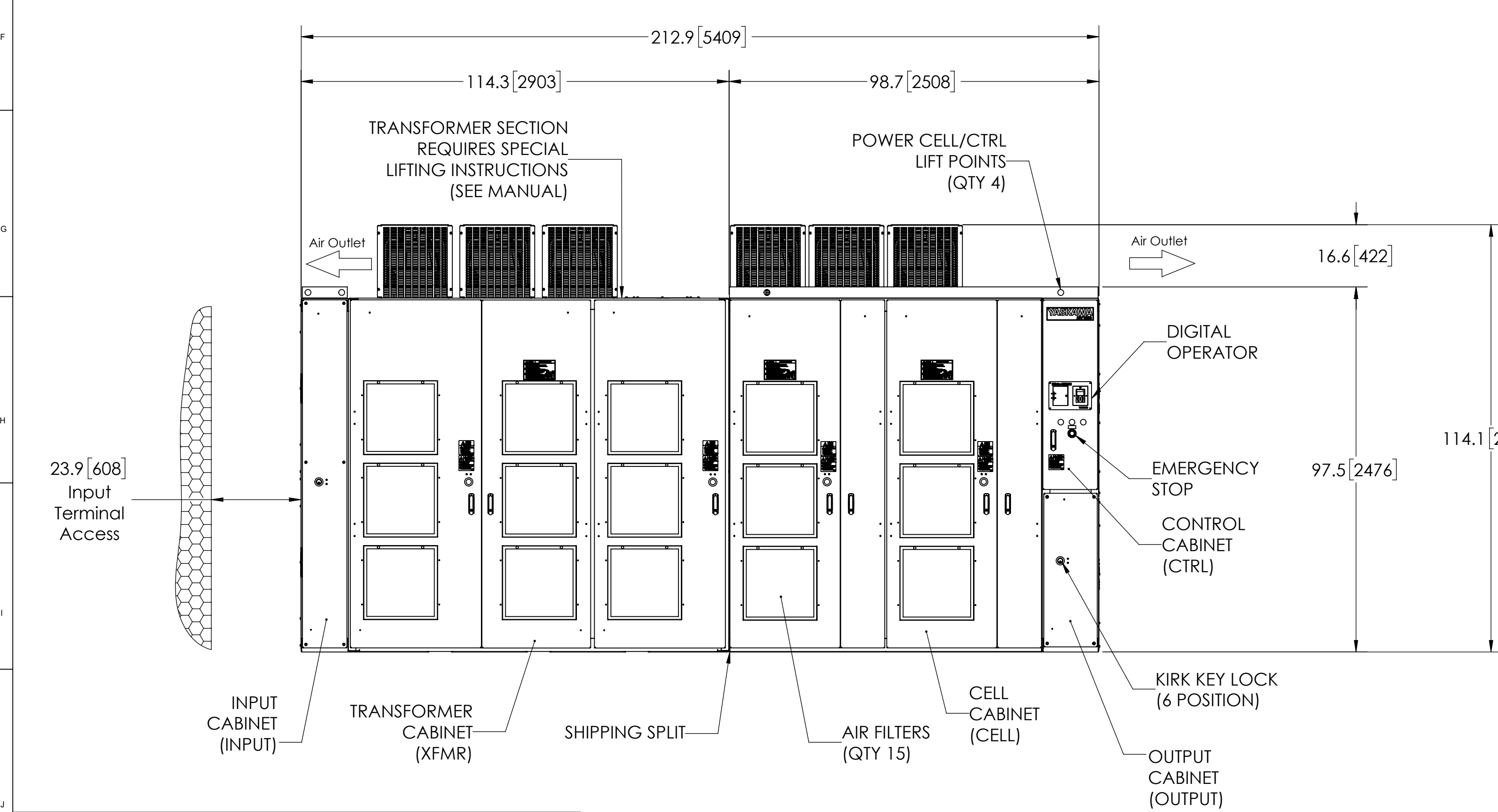
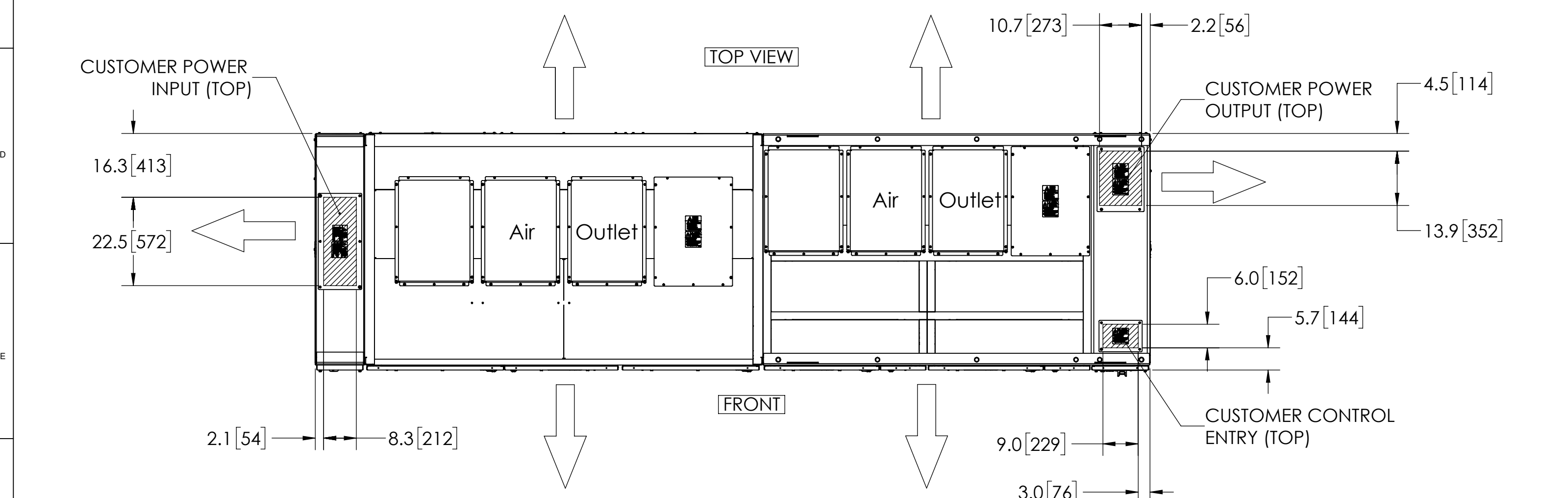


MODEL #	INPUT VOLTAGE (kV)	VOLTAGE CLASS (kV) (MOTOR)	DRIVE CURRENT RATING (A)	RATED POWER (HP)	TOTAL WEIGHT (lbs)[Kg]*	WIDTH (Inches [mm])	DEPTH (Inches [mm])	HEIGHT (Inches [mm])
MV2UA6AA440E1ACA	2.4	2.4	440	3500	EST. 15583 [7068]	212.9 [5409]	60.4 [1533]	114.1 [2898]
MV2UA6AA505E1ACA			505	4000				
MV2UA6AA575E1ACA			575	4500				
MV2UA6AA625E1ACA			625	5000				
MV2UD6DA440E1ACA	4.16	4.16	440	3500	EST. 15583 [7068]	212.9 [5409]	60.4 [1533]	114.1 [2898]
MV2UD6DA505E1ACA			505	4000				
MV2UD6DA575E1ACA			575	4500				
MV2UD6DA625E1ACA			625	5000				
MV2UJ6DA440E1ACA	13.8	4.16	440	3500	EST. 15583 [7068]	212.9 [5409]	60.4 [1533]	114.1 [2898]
MV2UJ6DA505E1ACA			505	4000				
MV2UJ6DA575E1ACA			575	4500				
MV2UJ6DA625E1ACA			625	5000				

* DOES NOT INCLUDE SHIPPING CONTAINER



- NOTES:
- FOR REFERENCE UNLESS PROPERLY ENDORSED. FOR ADDITIONAL DETAILS AND SPECIFICATIONS, CONSULT YASKAWA AMERICA, INC.
 - DIMENSIONS ARE IN INCHES[MILLIMETERS]
 - USE APPROPRIATE TYPE RATED HUBS OR FITTINGS TO MAINTAIN ENCLOSURE RATING.
 - HATCHED AREA INDICATES PERMISSIBLE CONDUIT ENTRANCE AREA.

REVISIONS			
REV.	DESCRIPTION	ECR#	DATE
00	INITIAL RELEASE	-	8/29/2017

elliott_rashed Monday, November 27, 2017 9:05:29 AM

ENCLOSURE	UL TYPE 1
OUTSIDE	ANSI 61 GRAY (SEMI GLOSS)
INSIDE	ANSI 61 GRAY (SEMI GLOSS)

ITEM NO.	NAME
(INPUT)	INPUT CABINET
(XFMR)	TRANSFORMER CABINET
(CELL)	CELL CABINET
(CTRL)	CONTROL CABINET
(OUTPUT)	OUTPUT CABINET

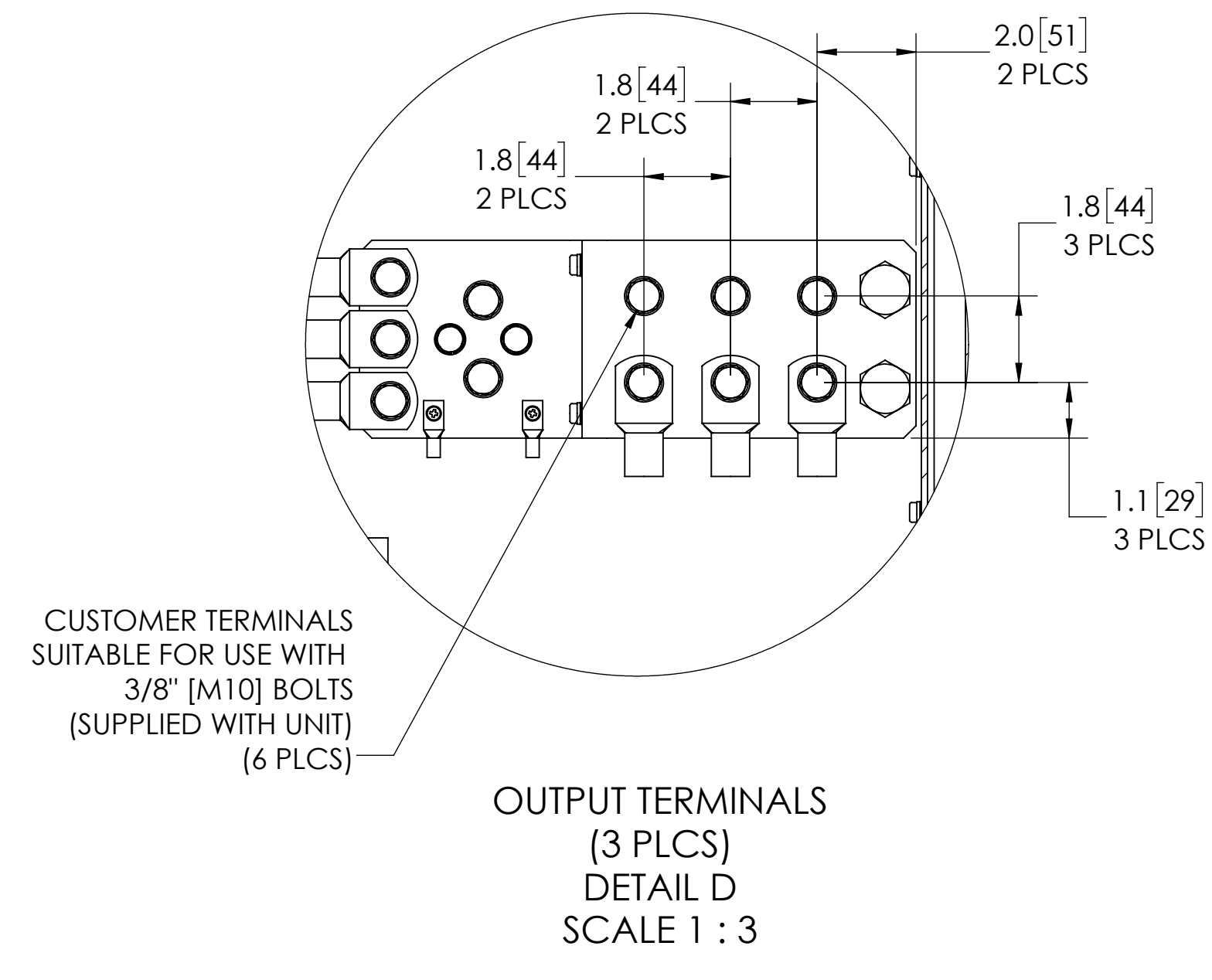
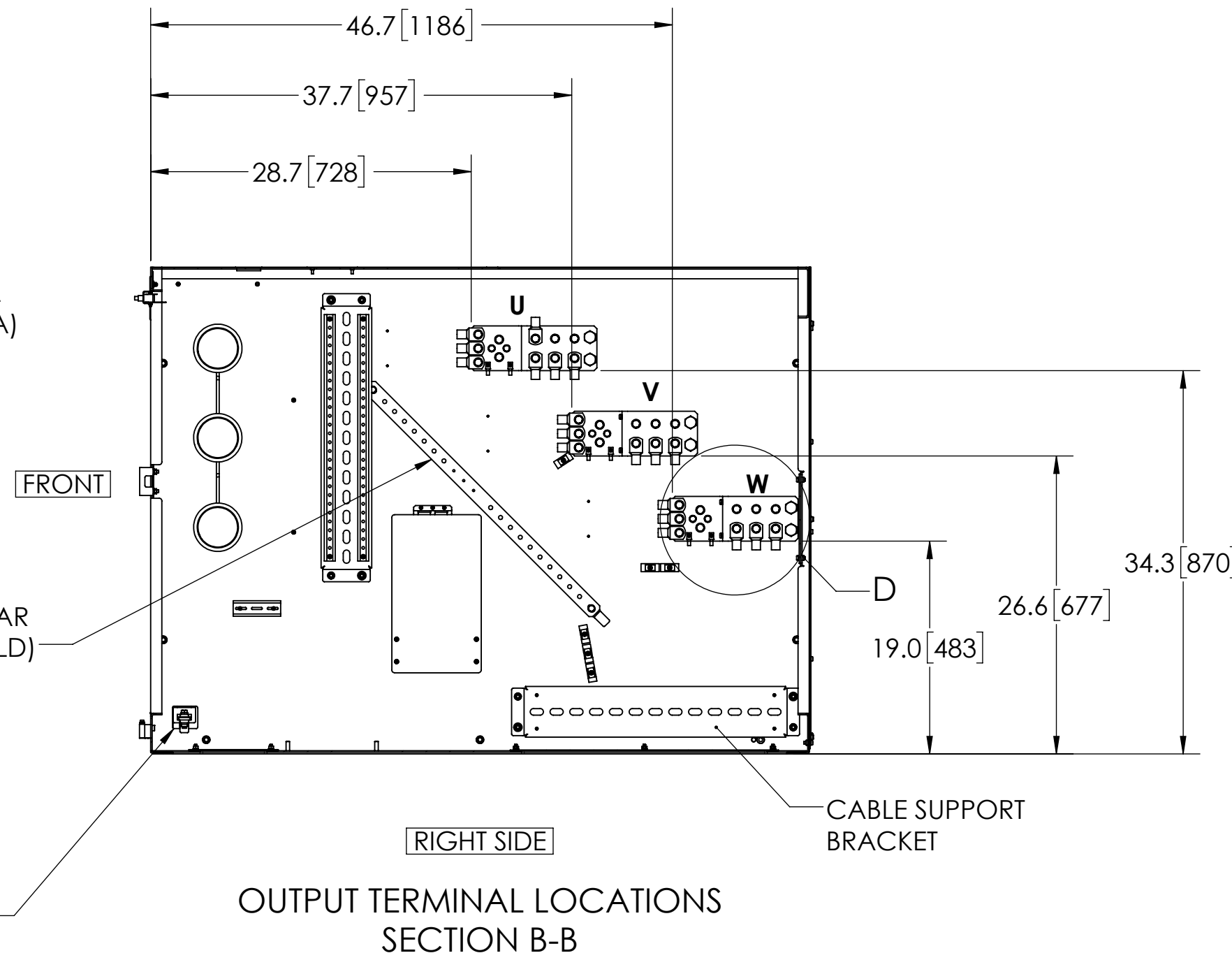
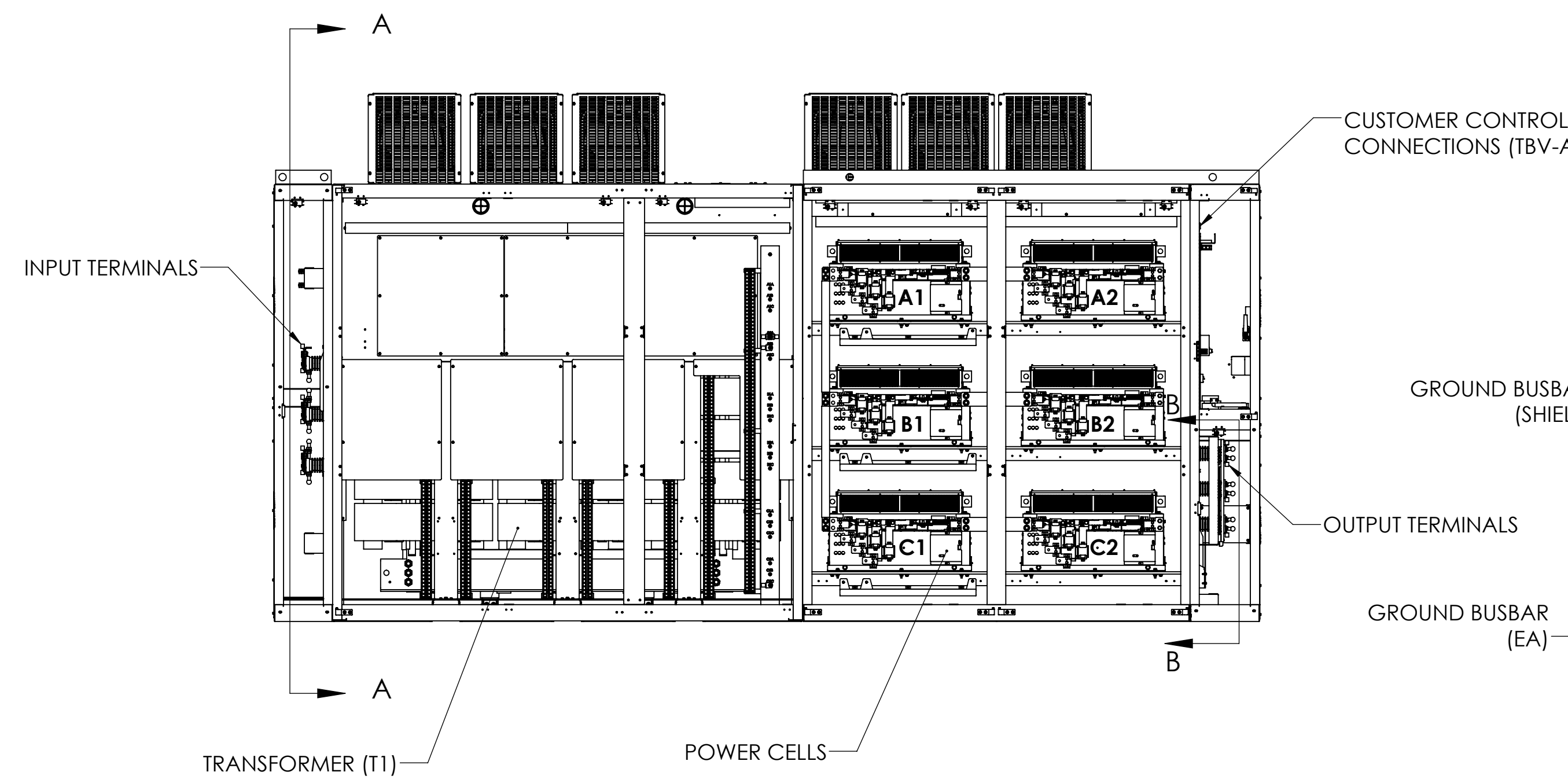
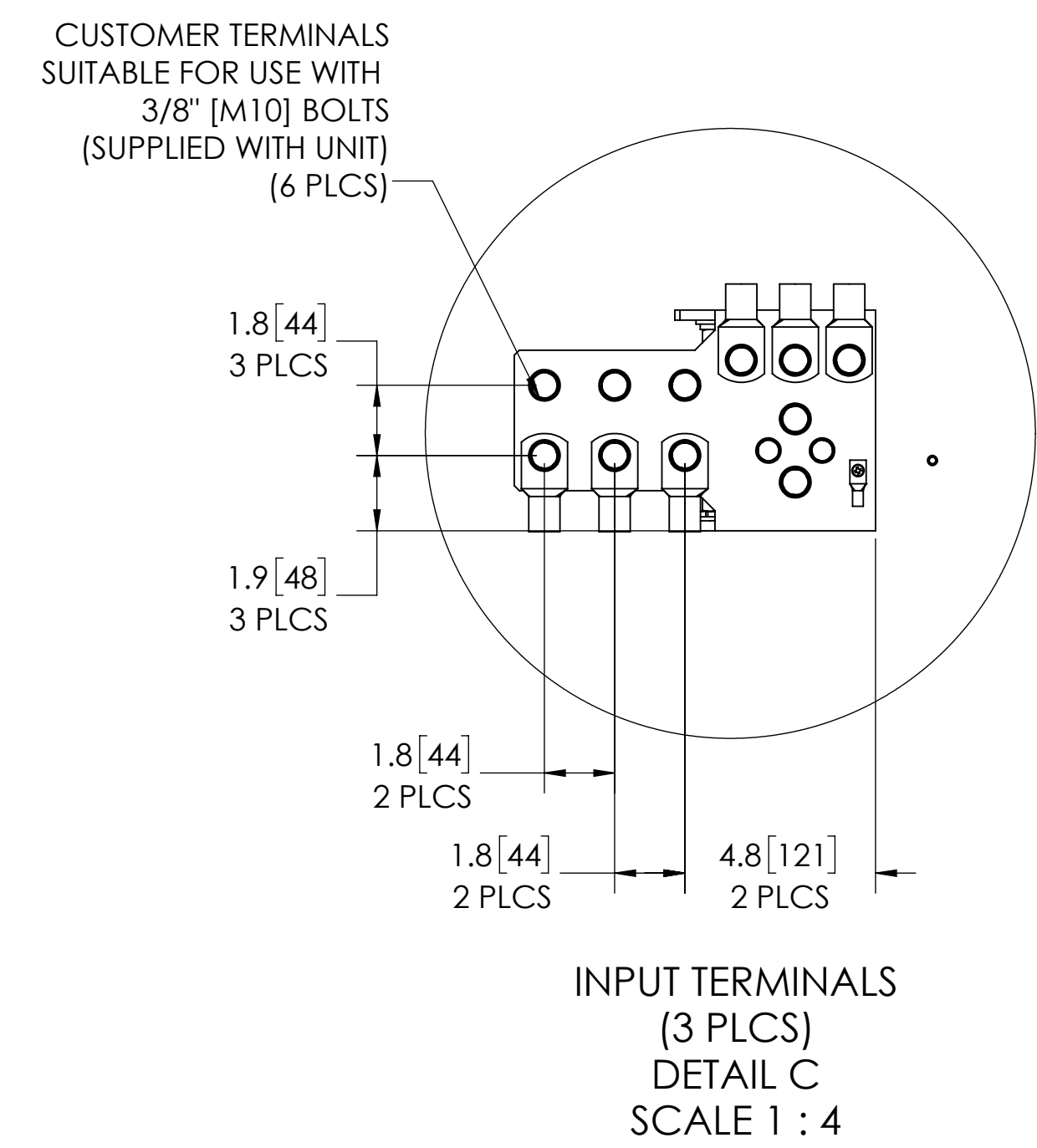
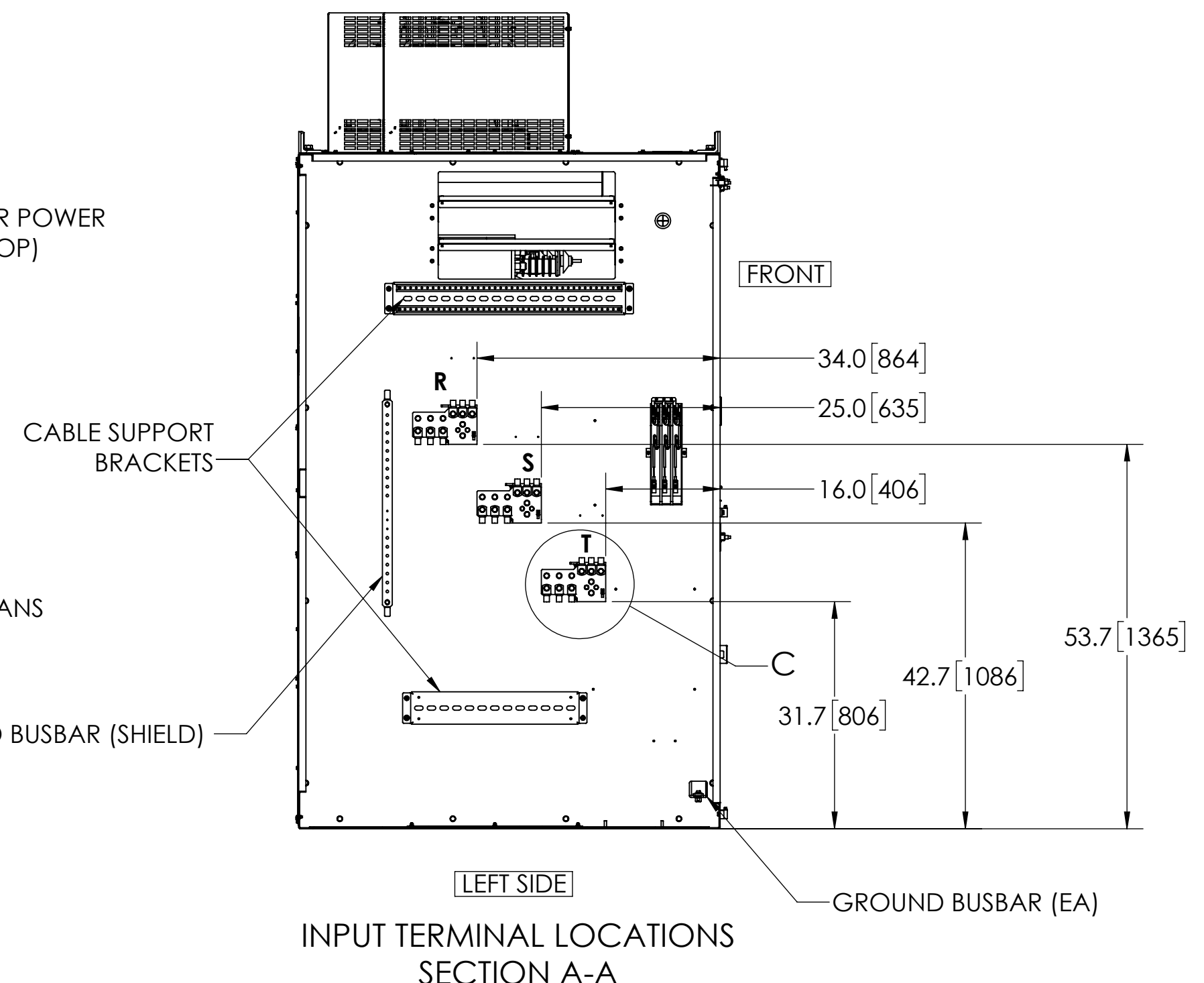
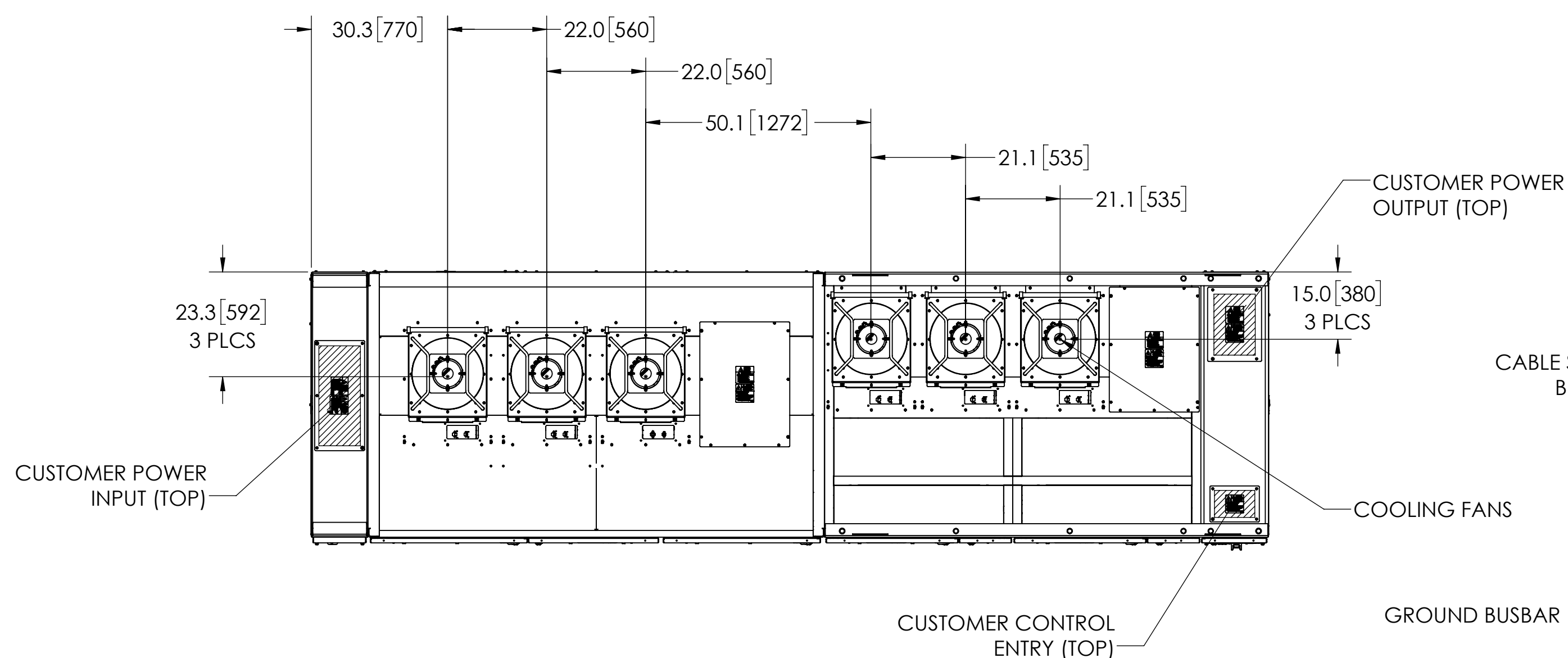
YASKAWA

THIS DOCUMENT AND INFORMATION CONTAINED IN IT ARE CONFIDENTIAL, AND CANNOT BE COPIED OR DISCLOSED IN WHOLE OR IN PART WITHOUT THE EXPRESS WRITTEN CONSENT OF YASKAWA AMERICA INC.

DRAWN: E. Rashed	DATE: 08/29/2017	TITLE: DIMENSIONAL DRAWING, MV1000, FRM 5, W/O SG
CHECKED: R. Thom	DATE: 08/29/2017	
APPROVED: B. Schowanson	DATE: 08/29/2017	
ORIGINAL DESIGN: E. Rashed	DATE: 08/29/2017	

MATERIAL#	SEE TABLE
SIZE D	REVISION 00
PAGE 1	PAGE 1 OF 2

DRAWING #: DD.MV1K.FR5.N1.NG.01



- NOTES:
- FOR REFERENCE UNLESS PROPERLY ENDORSED. FOR ADDITIONAL DETAILS AND SPECIFICATIONS, CONSULT YASKAWA AMERICA, INC.
 - DIMENSIONS ARE IN INCHES[MILLIMETERS]
 - USE APPROPRIATE TYPE RATED HUBS OR FITTINGS TO MAINTAIN ENCLOSURE RATING.
 - HATCHED AREA INDICATES PERMISSIBLE CONDUIT ENTRANCE AREA.

YASKAWA		DRAWN: E. Rashed	DATE 08/29/2017	TITLE: DIMENSIONAL DRAWING, MV1000, FRM 5, W/O SG
THIS DOCUMENT AND INFORMATION CONTAINED HEREIN ARE CONFIDENTIAL, AND CANNOT BE COPIED OR DISCLOSED IN WHOLE OR IN PART WITHOUT THE EXPRESS WRITTEN CONSENT OF YASKAWA AMERICA, INC.		CHECKED: R. Thom	DATE 08/29/2017	MATERIAL# SEE TABLE
		APPROVED: B. Schowanson	DATE 08/29/2017	SIZE D
		ORIGINAL DESIGN: E. Rashed	DATE 08/29/2017	REVISION 00
				PAGE 2 OF 2
				DRAWING #: DD.MV1K.FR5.N1.NG.01