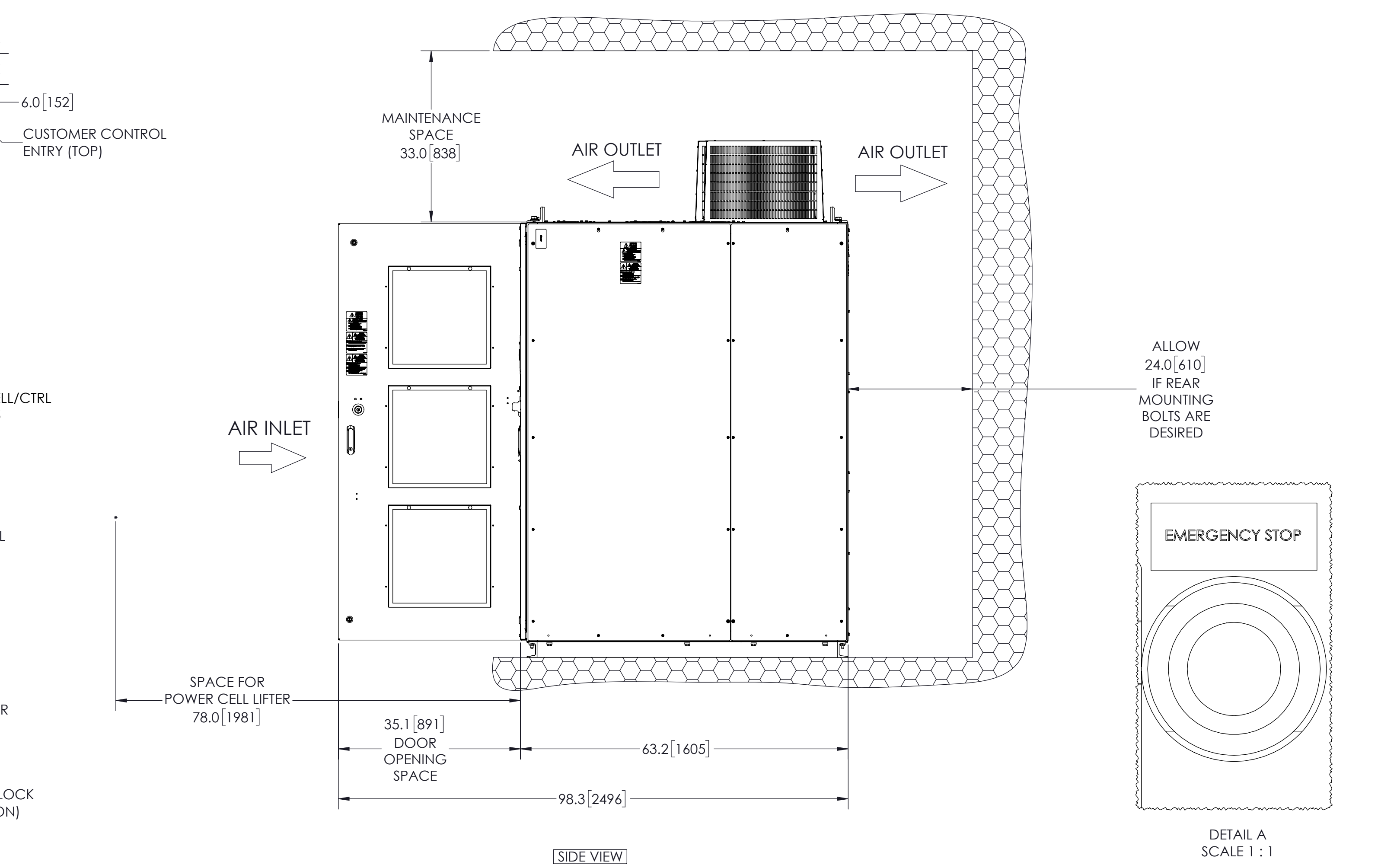
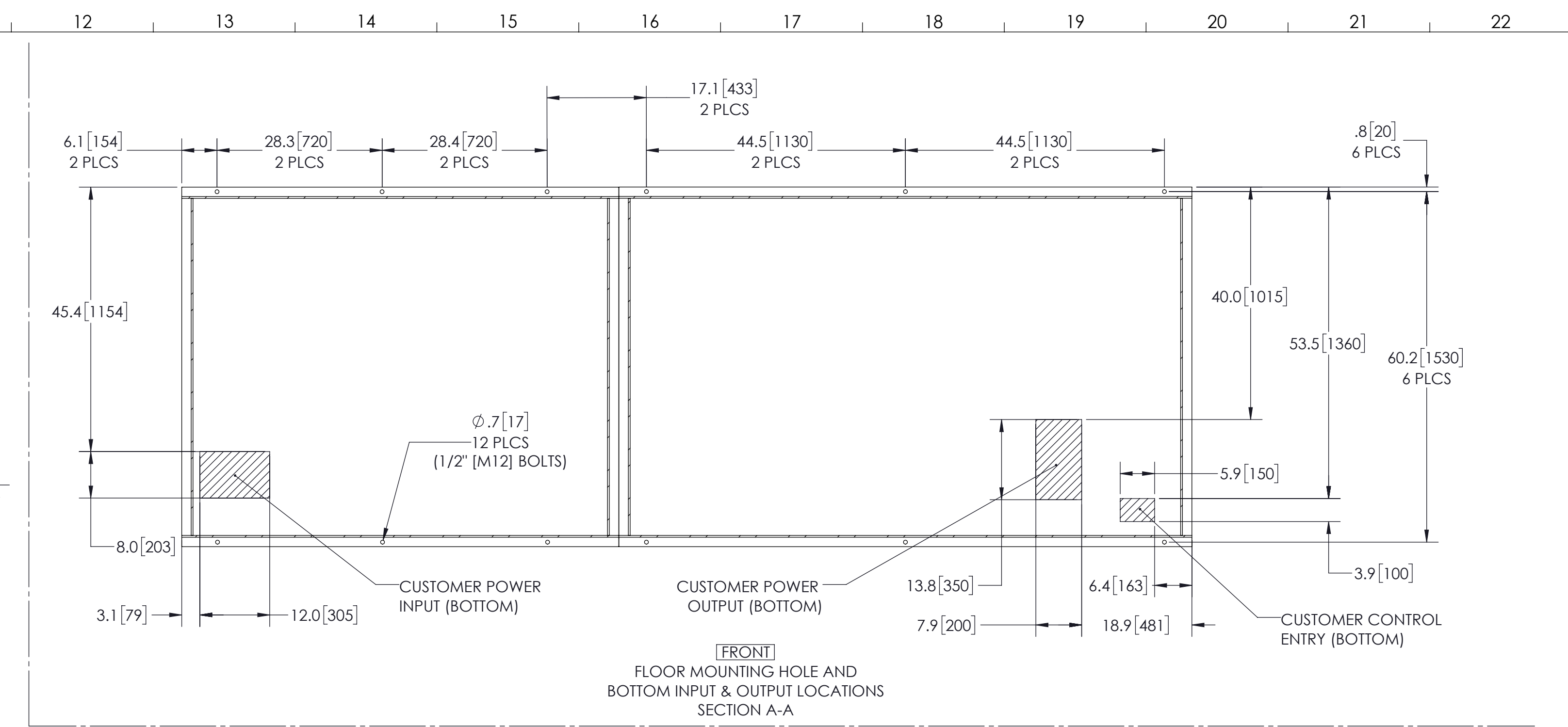
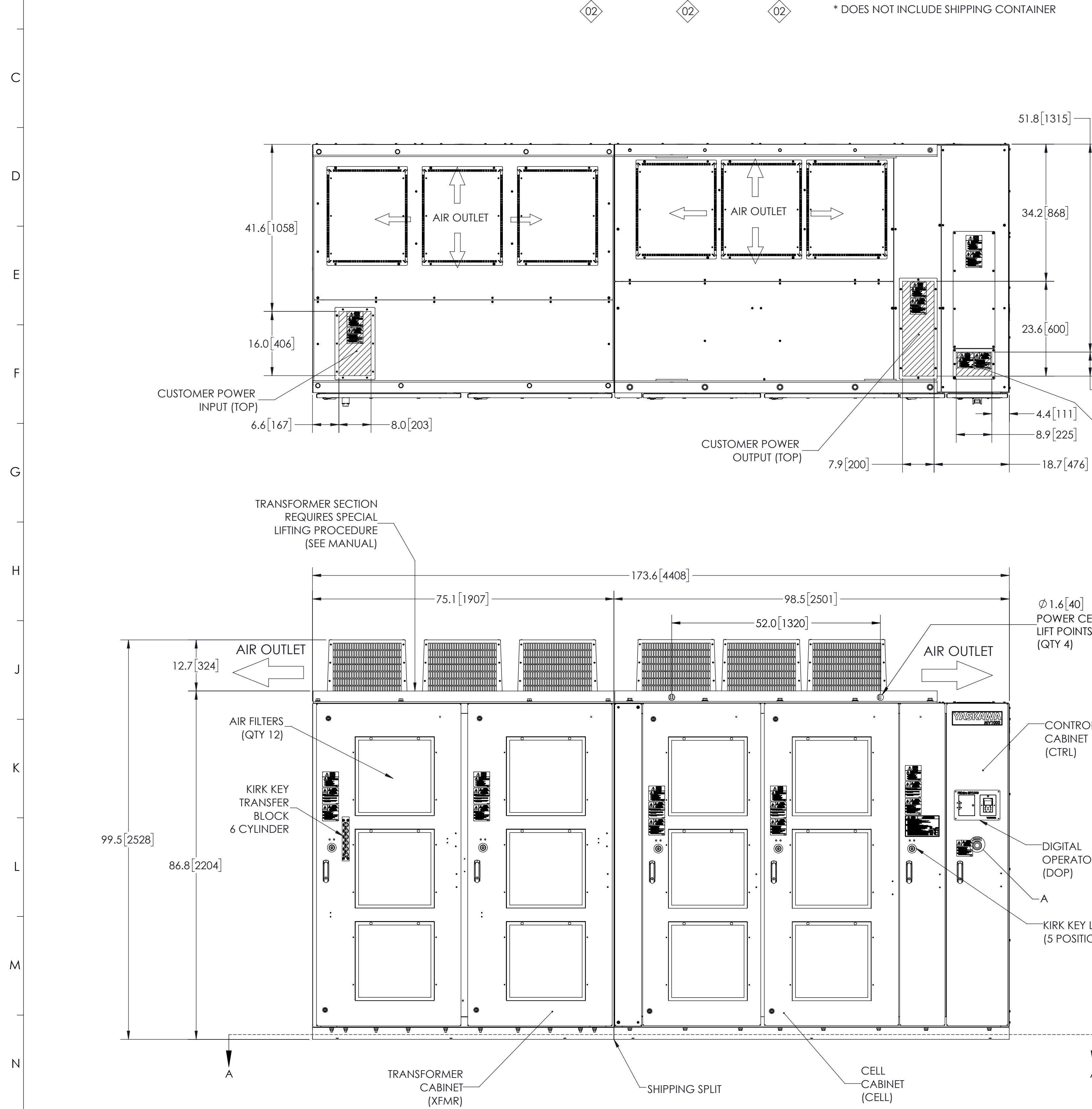


| MODEL # | INPUT VOLTAGE (kV) | VOLTAGE CLASS (kV) (MOTOR) | DRIVE CURRENT RATING (A) | RATED POWER (HP) | HEAT DISSIPATION (kW) | TOTAL WEIGHT (LBS)[KG]* | XFMR CABINET WEIGHT (LBS)[KG]* | CELL CABINET WEIGHT (LBS)[KG]* | WIDTH (Inches [mm]) | DEPTH (Inches [mm]) | HEIGHT (Inches [mm]) |
|------------------|--------------------|----------------------------|--------------------------|------------------|-----------------------|-------------------------|--------------------------------|--------------------------------|---------------------|---------------------|----------------------|
| MV2UA6AF280E1ABA | 2.4 | 2.4 | 280 | 1250 | 28.0 | EST. 12573 [5703] | EST. 7440 [3375] | EST. 5133 [2328] | 173.6 [4408] | 63.2 [1605] | 99.5 [2528] |
| MV2UA6AF330E1ABA | | | 330 | 1500 | 33.6 | EST. 12705 [5763] | | EST. 5265 [2388] | | | |
| MV2UA6AF390E1ABA | | | 390 | 1750 | 39.1 | EST. 13690 [6210] | | EST. 8425 [3822] | | | |
| MV2UD6DF285E1ABA | 4.16 | 4.16 | 285 | 2250 | 50.3 | EST. 15007 [6807] | EST. 9874 [4479] | EST. 5133 [2328] | 173.6 [4408] | 63.2 [1605] | 99.5 [2528] |
| MV2UD6DF315E1ABA | | | 315 | 2500 | 55.9 | EST. 15538 [7048] | | | | | |
| MV2UD6DF340E1ABA | | | 340 | 2750 | 61.5 | EST. 15538 [7048] | | | | | |
| MV2UD6DF375E1ABA | | | 375 | 3000 | 67.1 | EST. 15538 [7048] | | | | | |

* DOES NOT INCLUDE SHIPPING CONTAINER



- NOTES:
- FOR REFERENCE UNLESS PROPERLY ENDORSED. FOR ADDITIONAL DETAILS AND SPECIFICATIONS, CONSULT YASKAWA AMERICA, INC.
 - DIMENSIONS ARE IN INCHES[MILLIMETERS].
 - USE APPROPRIATE TYPED RATED HUBS OR FITTINGS TO MAINTAIN ENCLOSURE RATING.
 - HATCHED AREA INDICATES PERMISSIBLE CABLE/CONDUIT ENTRANCE AREA.

| REV | DESCRIPTION | ECR# | DRAWN BY | DATE |
|-----|--|-------|----------|------------|
| 02 | UPDATED WEIGHTS; ADDED XFMR CABINET WEIGHT & CELL CABINET WEIGHTS | 12900 | AEJ | 03/10/2023 |
| 01 | ADDED LABELS (SEE PAGE 2) ADDED AND CHANGED DIMENSIONS (SEE PAGE 2). ADDED VIEW "GG" (SEE PAGE 2) UPDATE WEIGHTS | 11623 | JDB | 8/16/2021 |
| 00 | INITIAL RELEASE | - | CJM | 6/9/2016 |

| ENCLOSURE | UL TYPE 1 | |
|-----------|-----------|--------------|
| COLOR | OUTSIDE | ANSI 61 GRAY |
| | INSIDE | ANSI 61 GRAY |

| ITEM NO. | NAME |
|----------|---------------------|
| (XFMR) | TRANSFORMER CABINET |
| (CELL) | CELL CABINET |
| (CTRL) | CONTROL CABINET |

YASKAWA

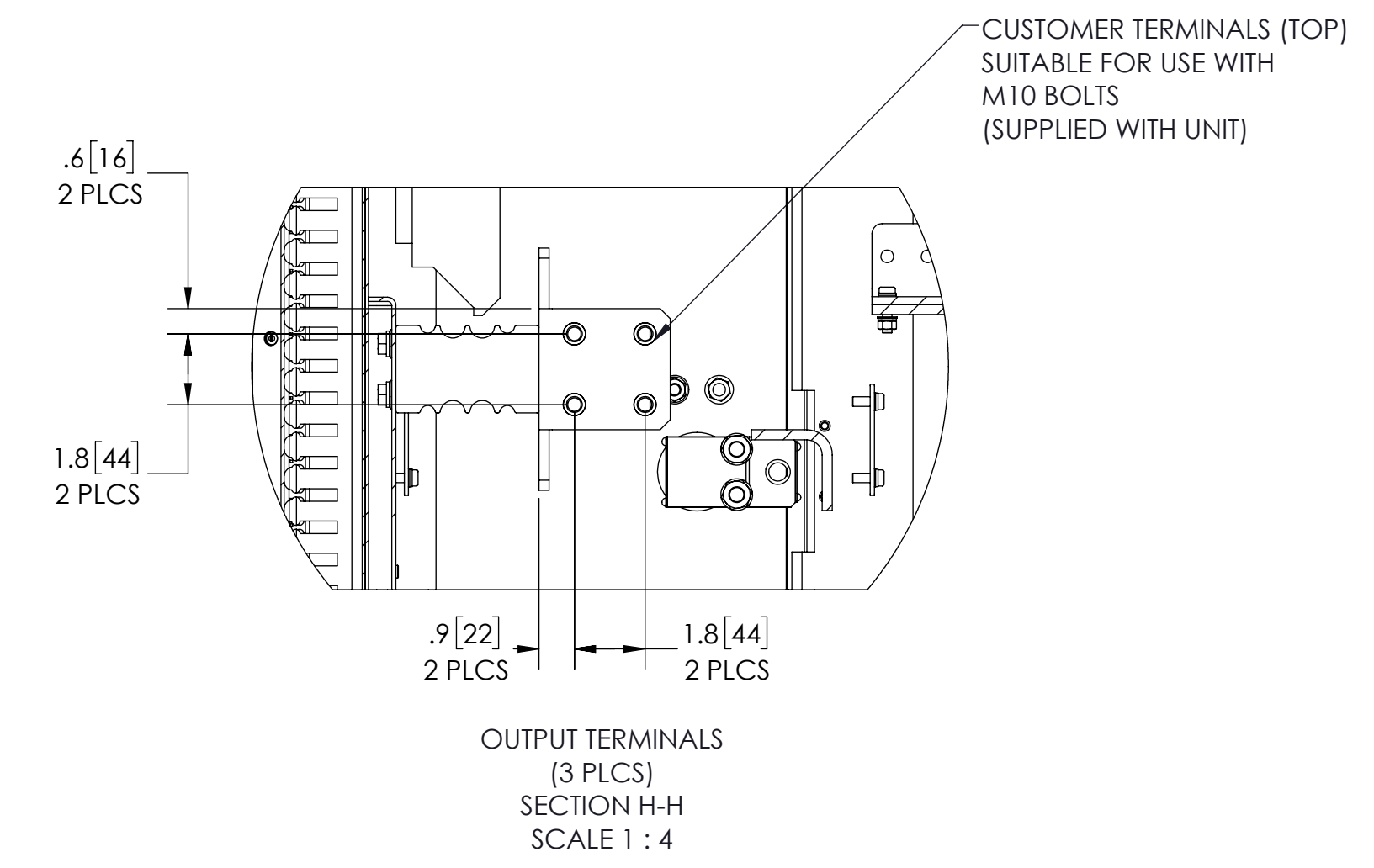
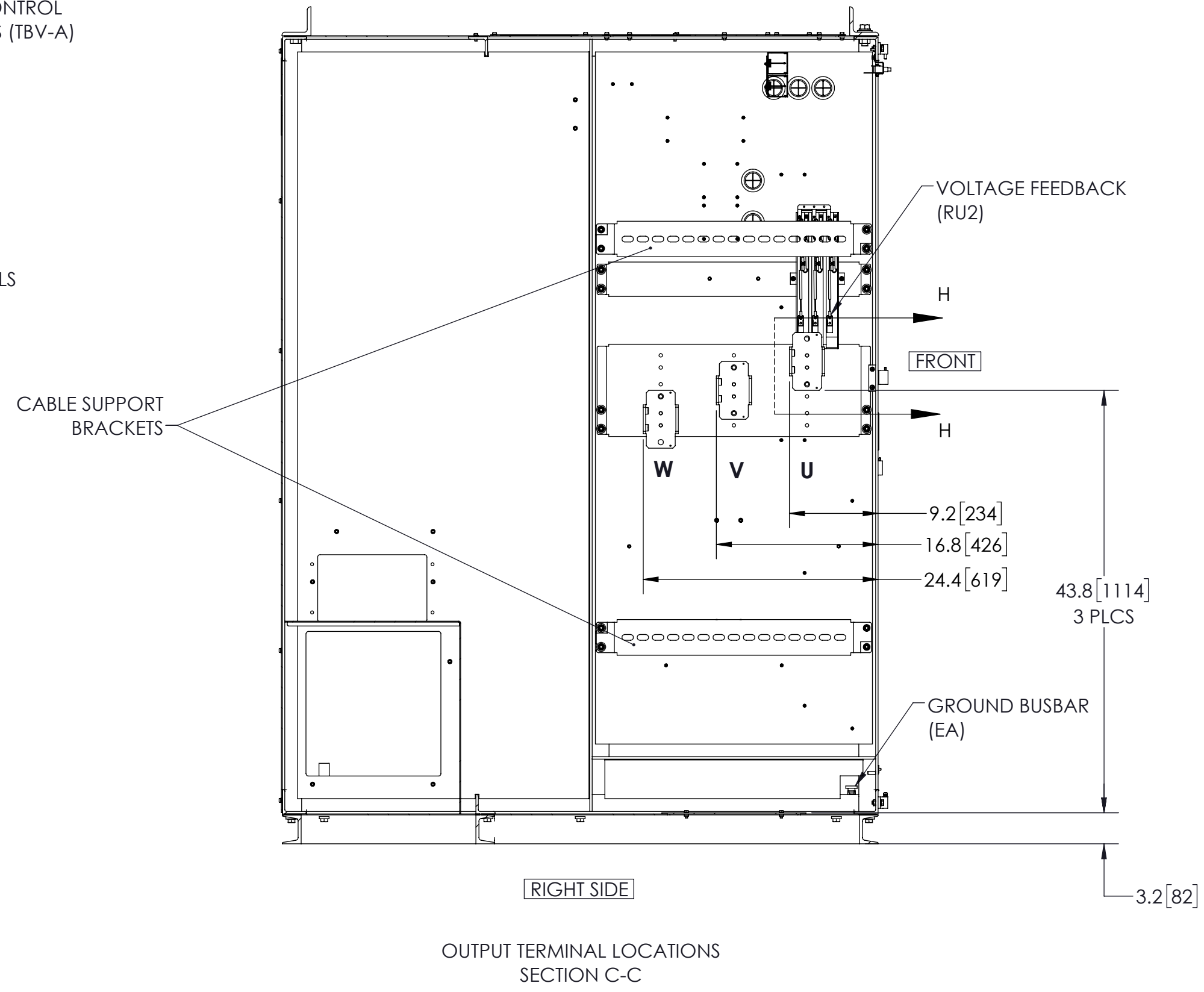
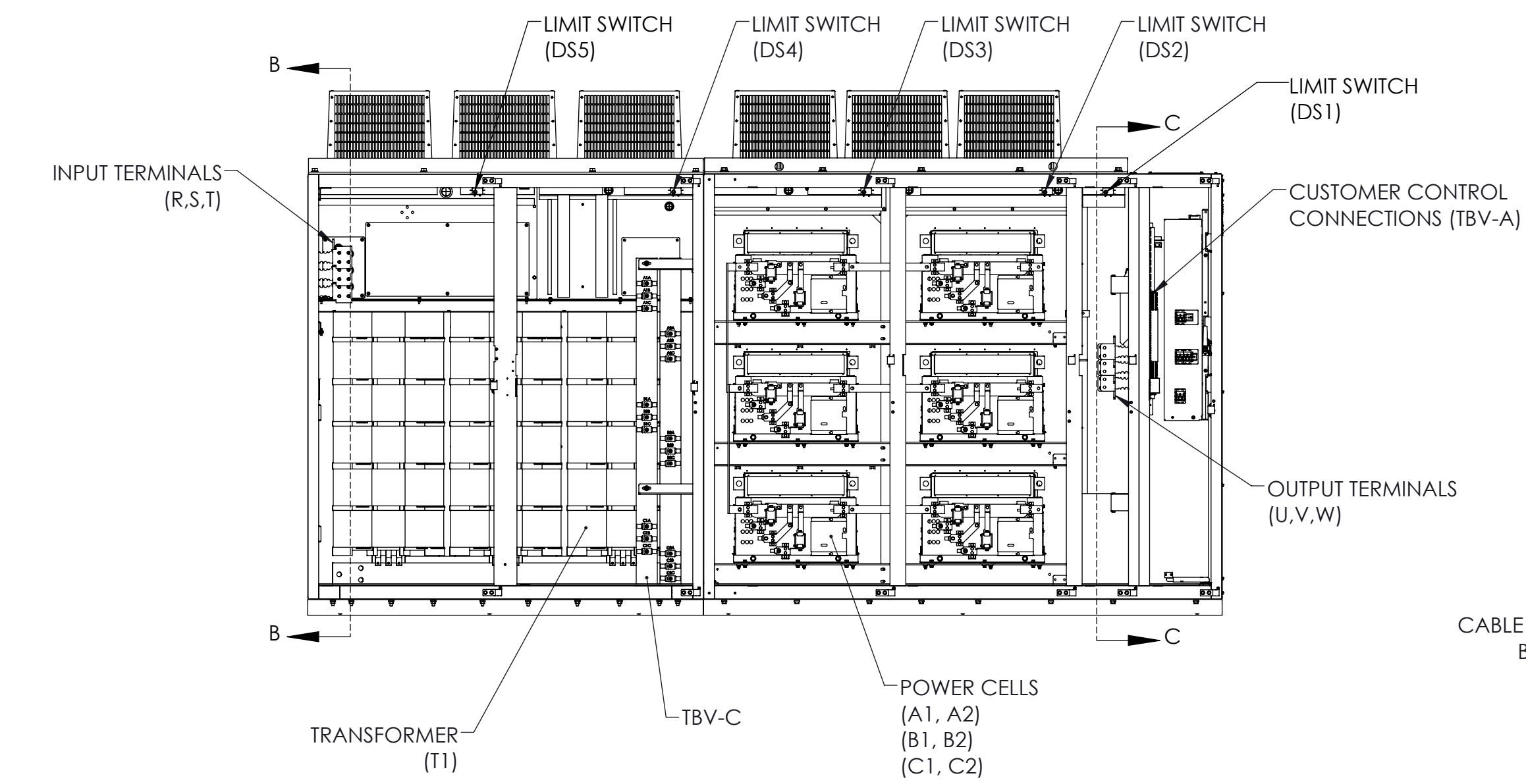
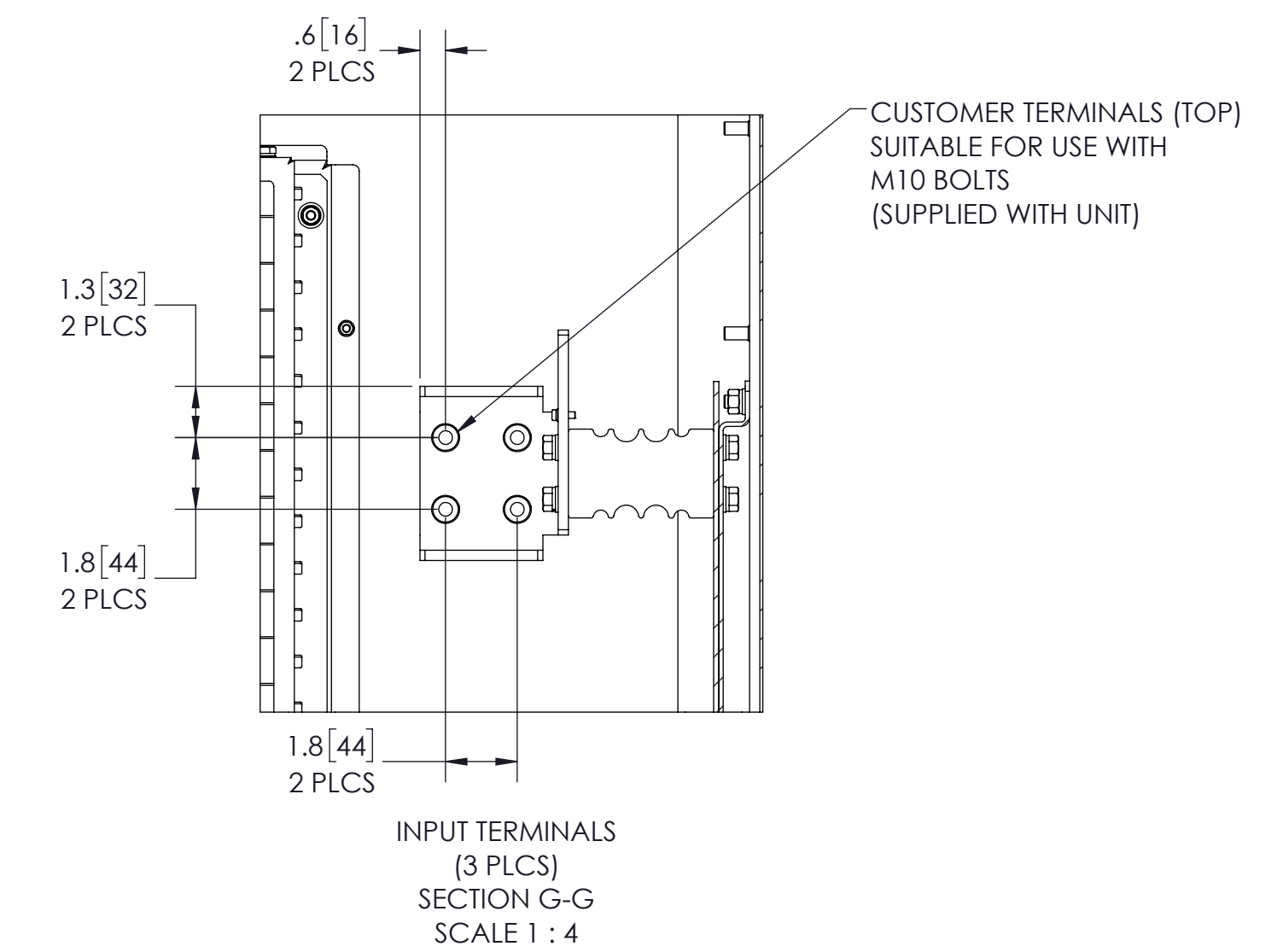
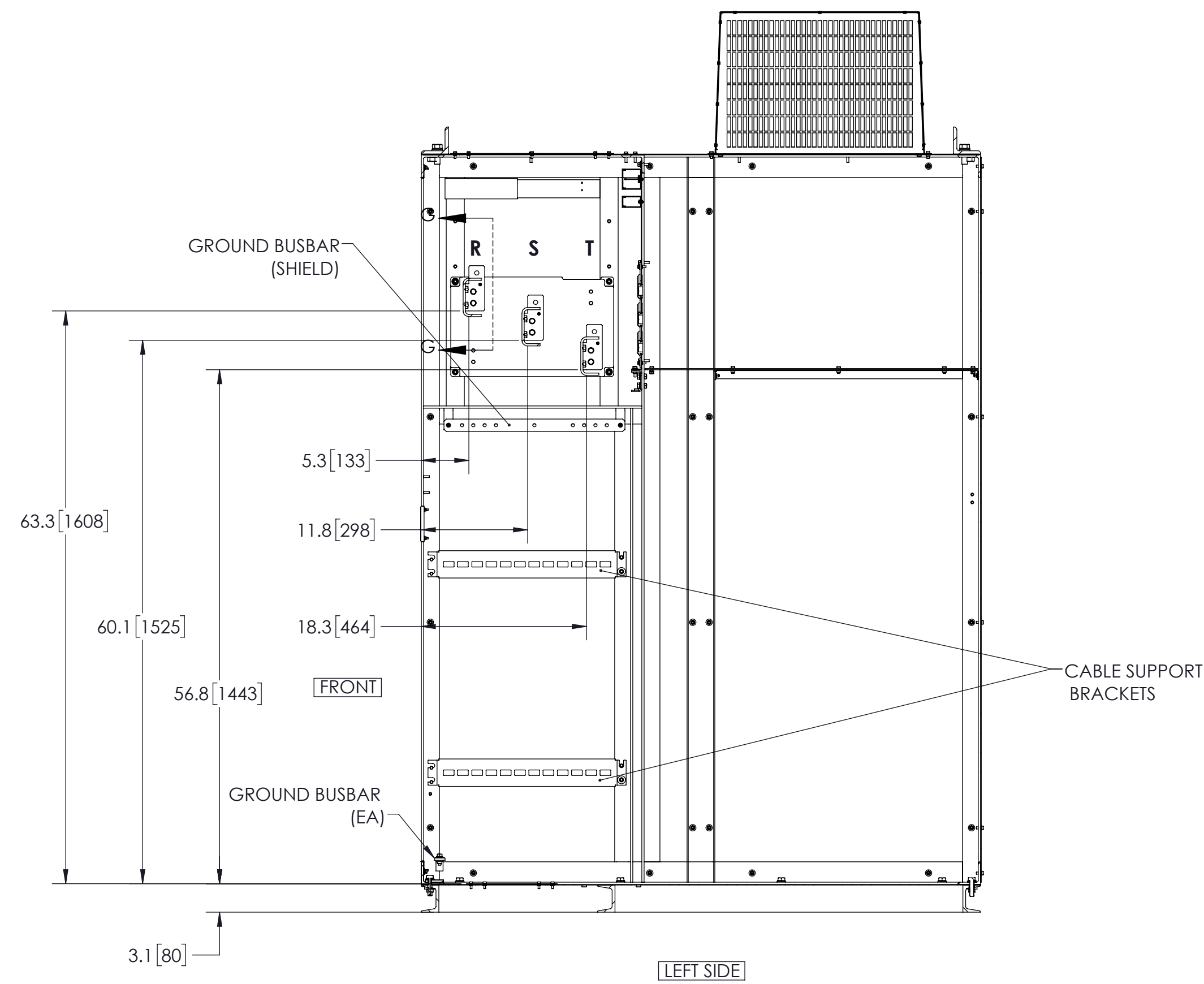
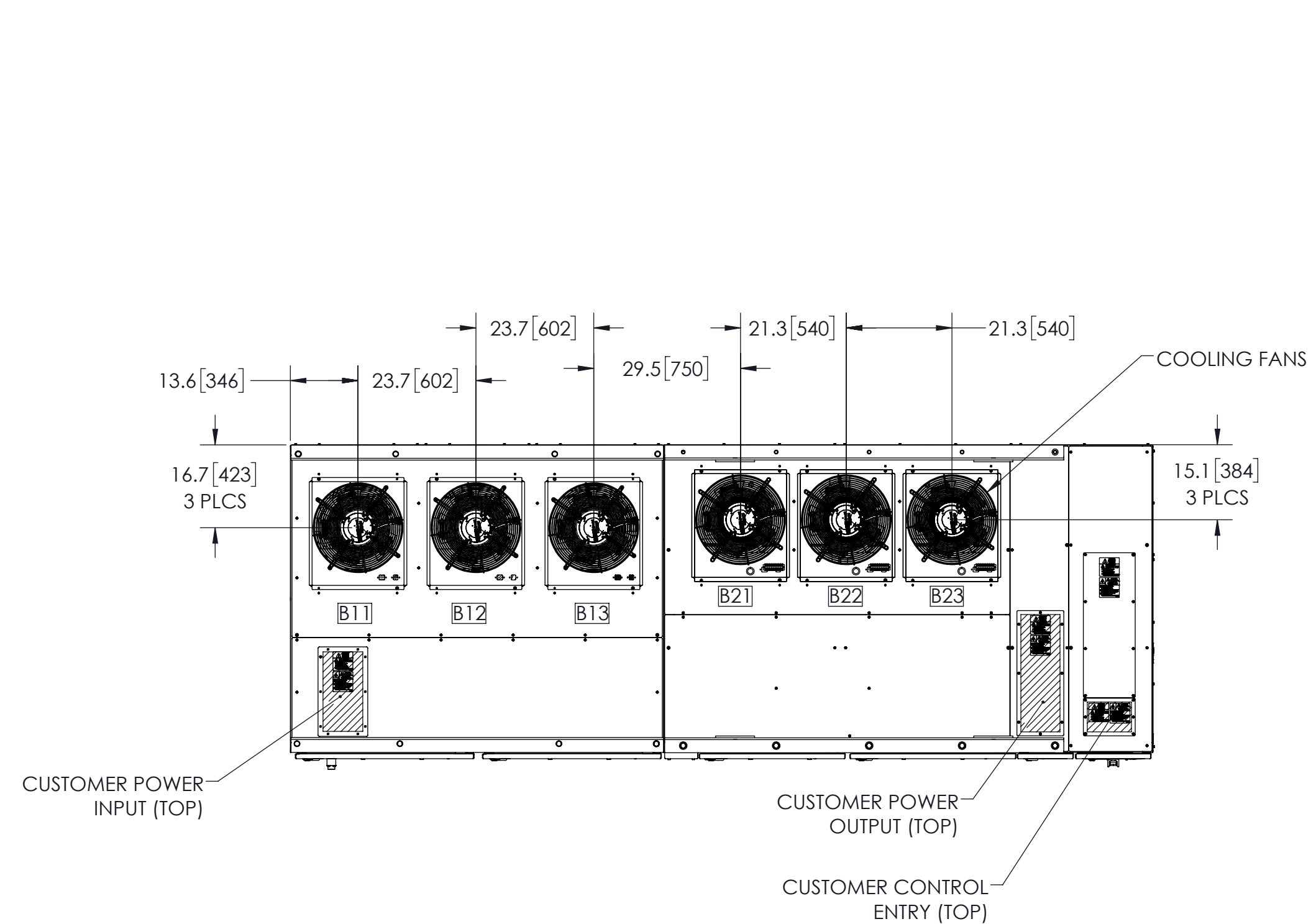
THIS DOCUMENT AND INFORMATION CONTAINED IN IT ARE CONFIDENTIAL, AND CANNOT BE COPIED OR DISCLOSED IN WHOLE OR IN PART WITHOUT THE EXPRESS WRITTEN CONSENT OF YASKAWA AMERICA, INC.

UNITS: INCHES
SCALE: NONE

REF. MODEL FOR MISSING DIMS

| | | |
|--|---------------------------|---|
| ORIGINAL DESIGN: C. Michalek | DATE: 6/7/2016 | TITLE: DIMENSIONAL DRAWING, MV1000, FRM 3, W/O SG |
| DRAWN: C. Michalek | DATE: 6/9/2016 | |
| CHECKED: S. Tomczak | DATE: 6/13/2016 | SIZE D |
| APPROVED: B. Johnson | DATE: 6/28/2016 | REVISION 02 |
| | | PAGE 1 OF 2 |

| | |
|------------|-----------------------------|
| DRAWING #: | DD.MV1K.FR3.N1.NG.01 |
|------------|-----------------------------|



- NOTES:
- FOR REFERENCE UNLESS PROPERLY ENDORSED. FOR ADDITIONAL DETAILS AND SEPCIFICATIONS, CONSULT YASKAWA AMERICA, INC.
 - DIMENSIONS ARE IN INCHES (MILLIMETERS).
 - USE APPROPRIATE TYPED RATED HUBS OR FITTINGS TO MAINTAIN ENCLOSURE RATING.
 - HATCHED AREA INDICATES PERMISSIBLE CABLE/CONDUIT ENTRANCE AREA.

| | | | | | |
|---|-----------------------------|------------|---|------------|----------------------|
| YASKAWA | ORIGINAL DESIGN: | DATE: | TITLE: | | |
| | C. Michalek | 6/7/2016 | DIMENSIONAL DRAWING, MV1000, FRM 3, W/O SG | | |
| THIS DOCUMENT AND INFORMATION CONTAINED IN IT ARE CONFIDENTIAL, AND CANNOT BE COPIED OR DISCLOSED IN WHOLE OR IN PART WITHOUT THE EXPRESS WRITTEN CONSENT OF YASKAWA AMERICA INC. | DRAWN: | DATE: | SIZE | REVISION | PAGE |
| | C. Michalek | 6/9/2016 | D | 02 | 2 OF 2 |
| UNITS: INCHES SCALE: NONE | REF. MODEL FOR MISSING DIMS | CHECKED: | DATE: | DRAWING #: | |
| | | S. Tomczak | 6/13/2016 | | |
| | | APPROVED: | DATE: | | |
| | | B. Johnson | 6/28/2016 | | DD.MV1K.FR3.N1.NG.01 |