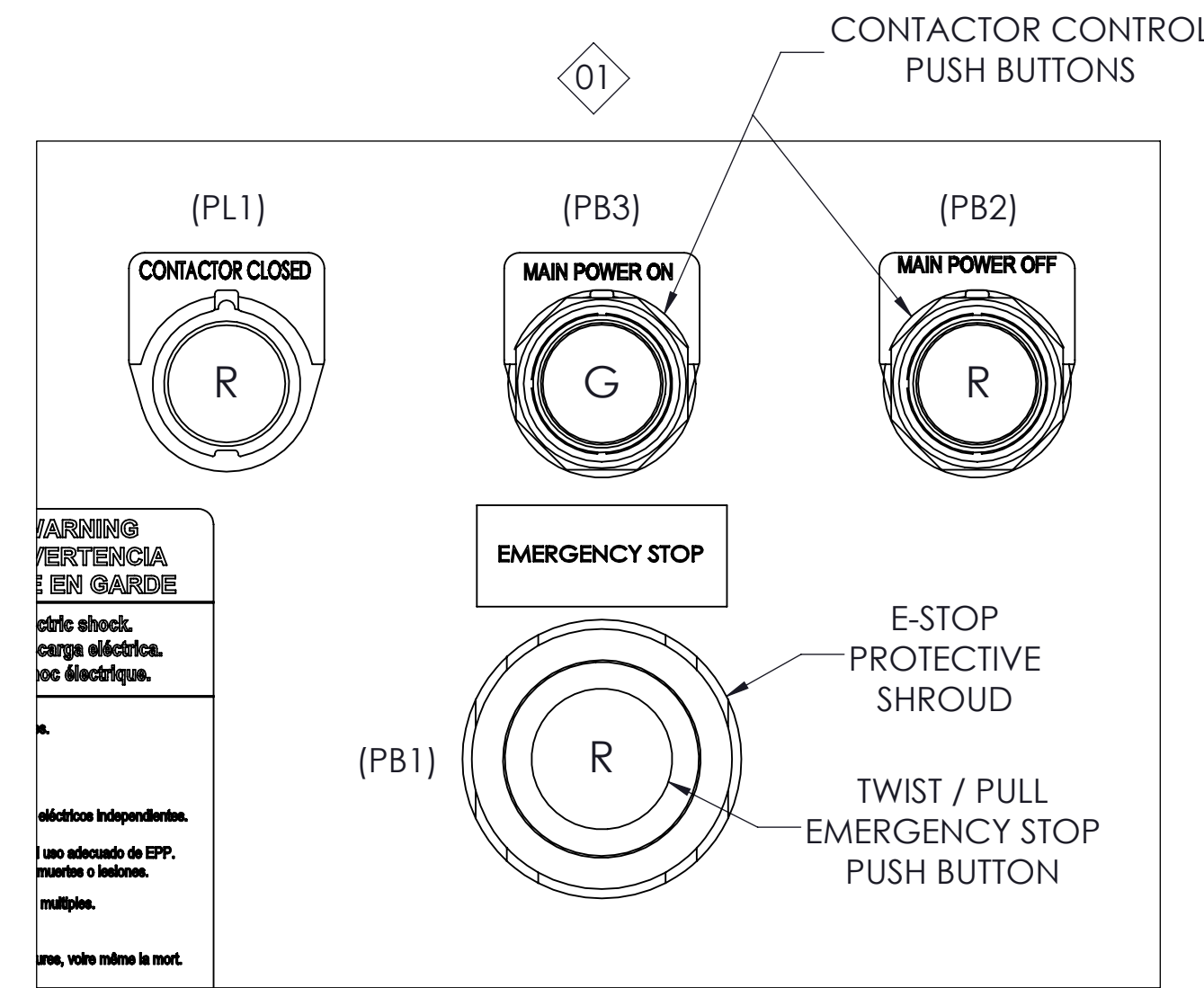
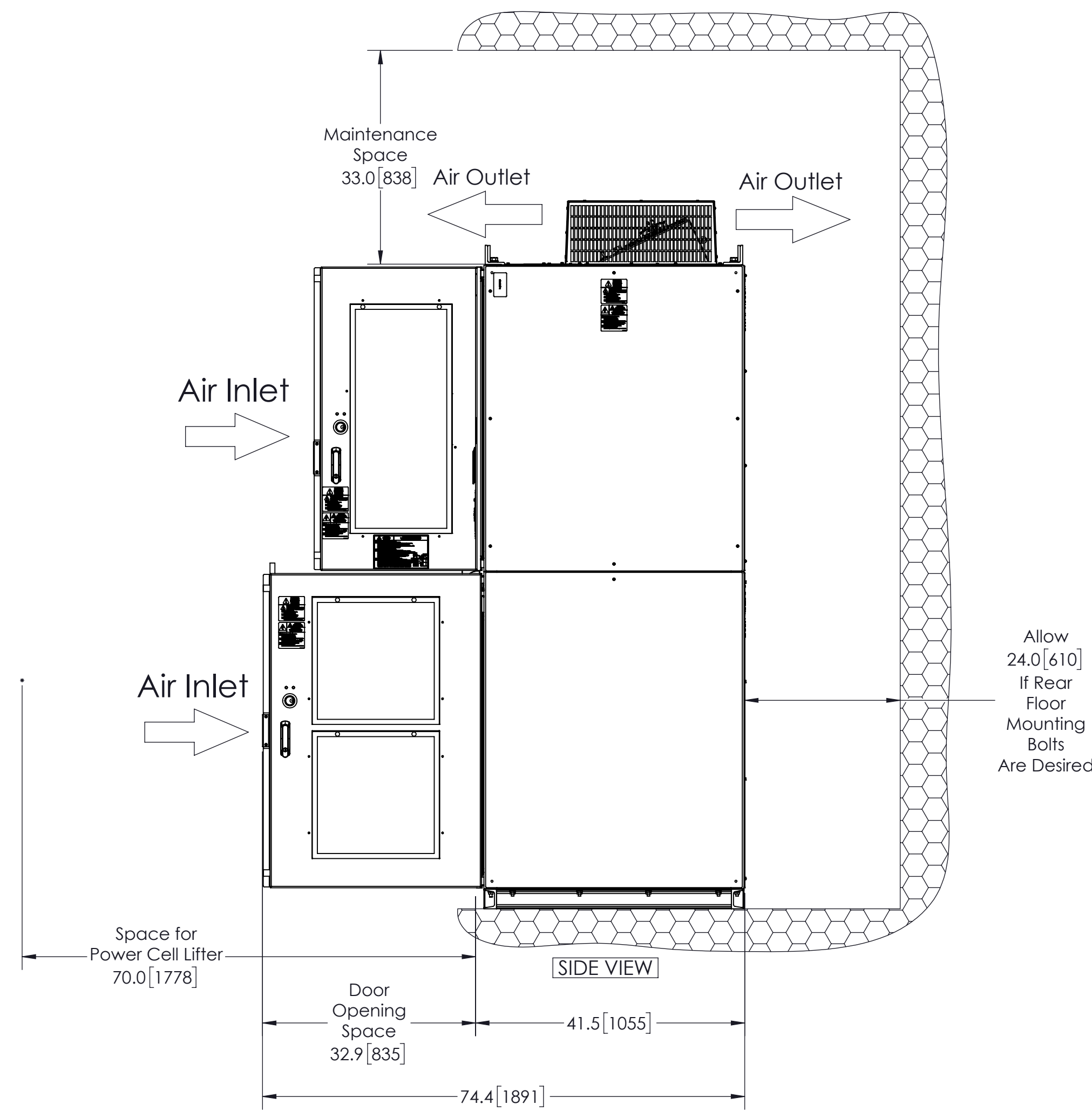
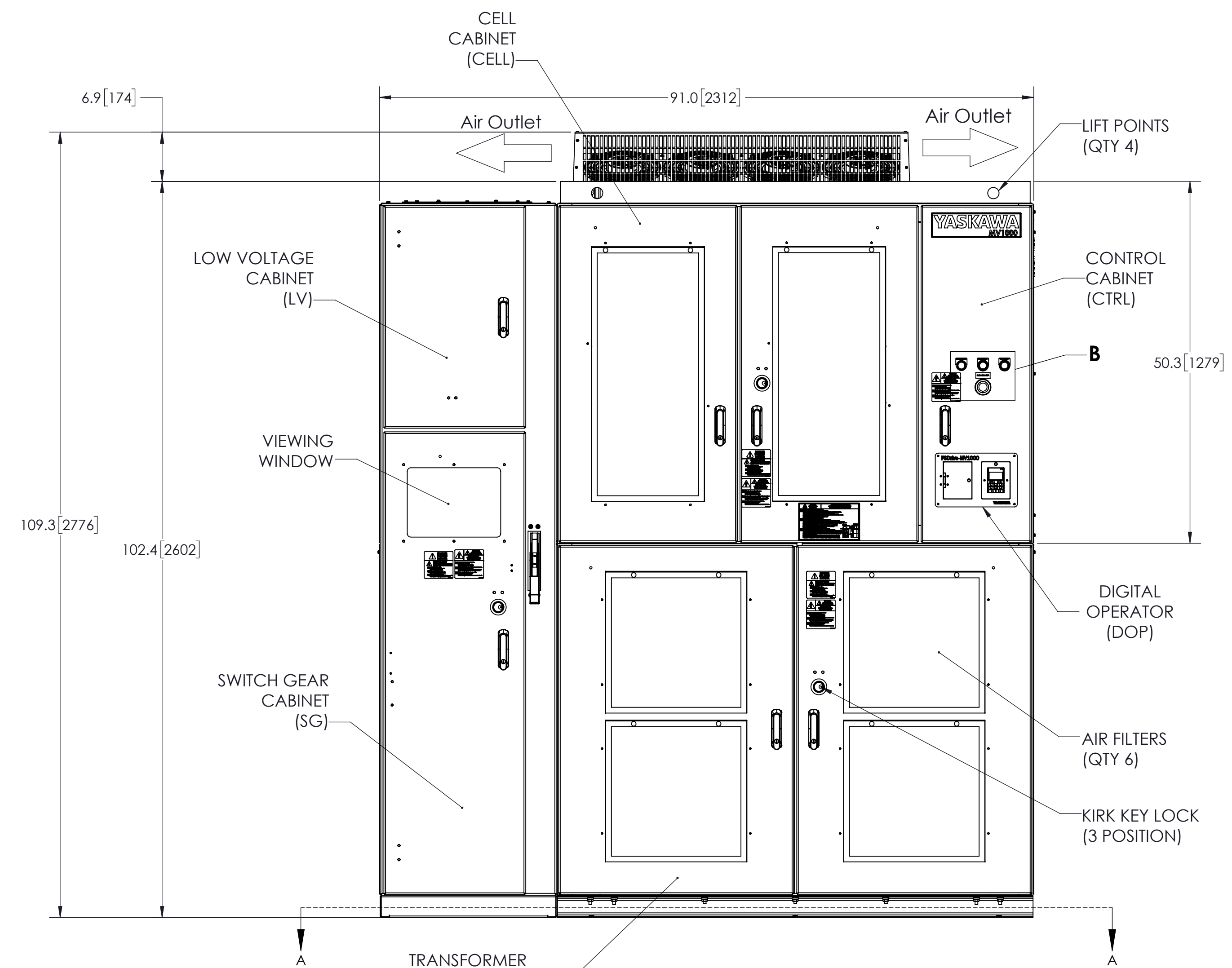
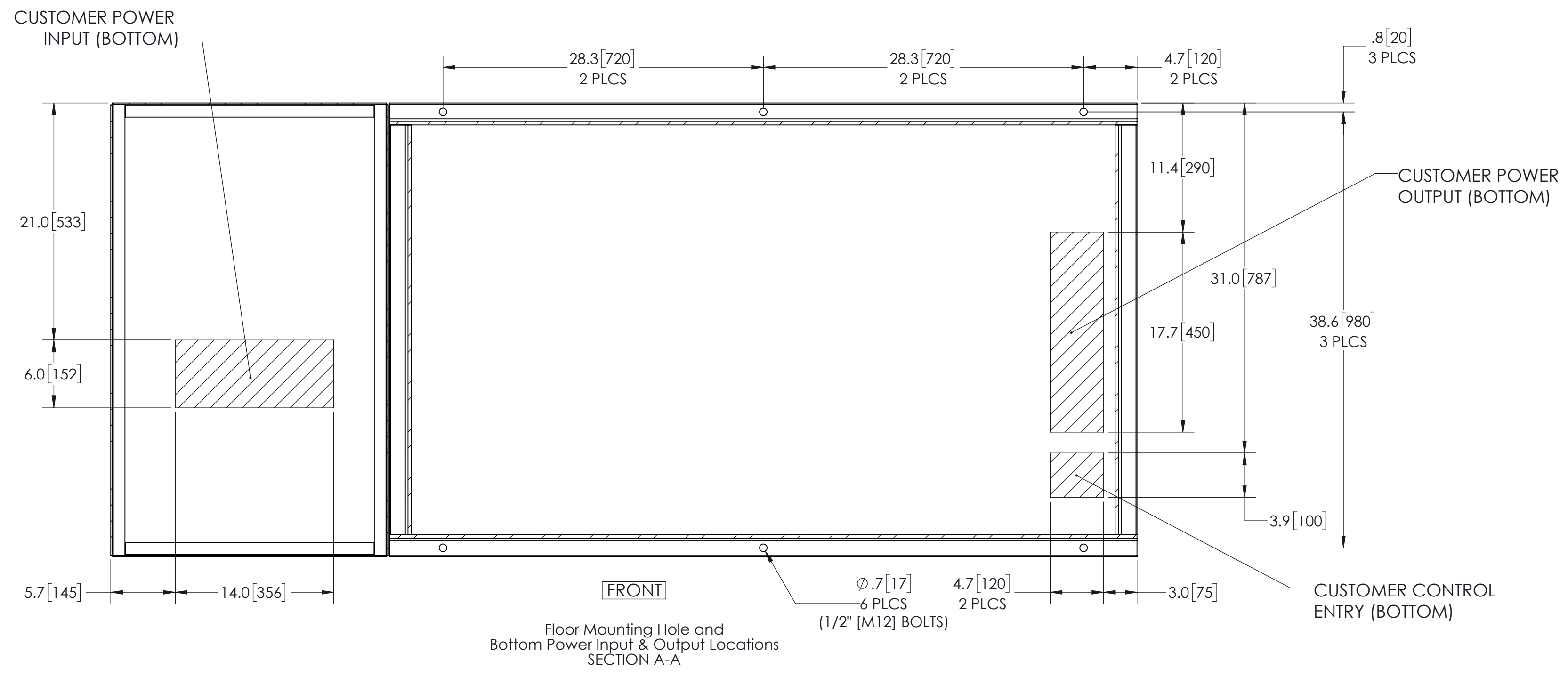
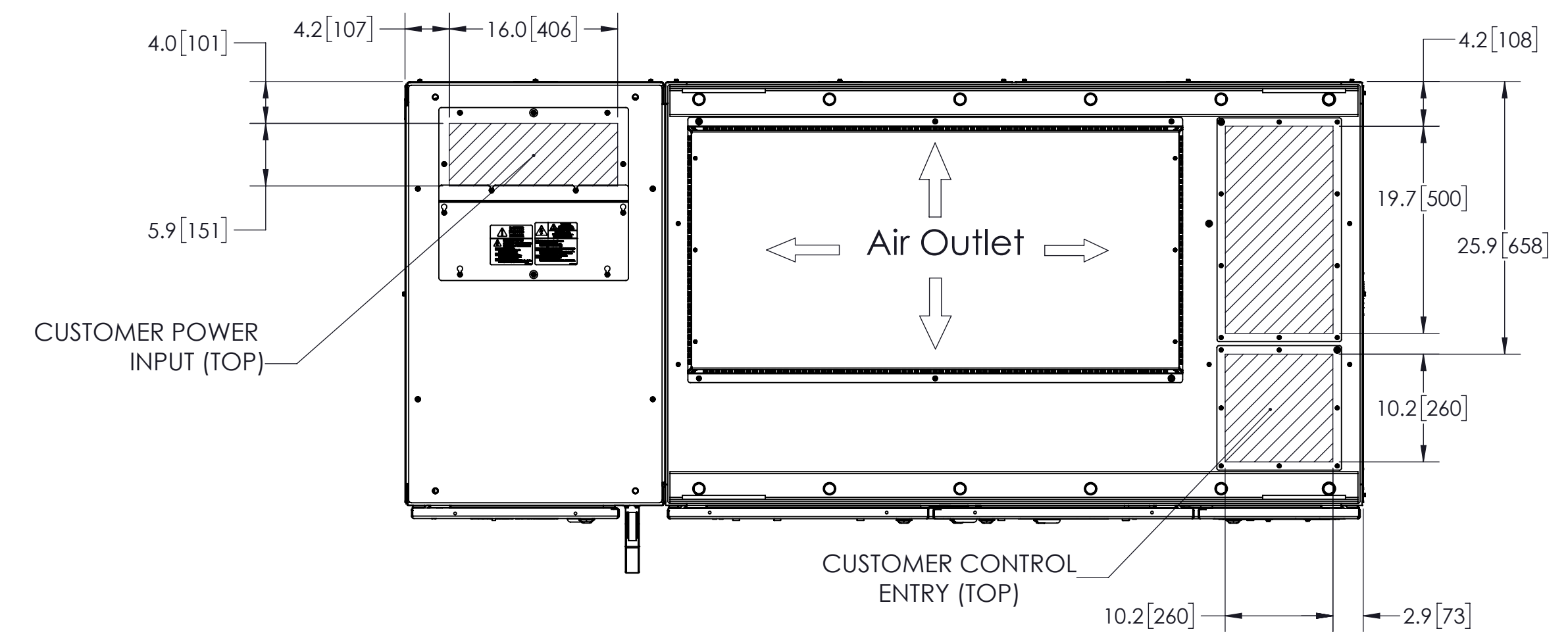


MODEL #	INPUT VOLTAGE (KV)	VOLTAGE CLASS (KV) (MOTOR)	DRIVE CURRENT RATING (A)	RATED POWER (HP)	HEAT DISSIPATION (kW)	TOTAL WEIGHT (lbs)[Kg]*	WIDTH (Inches [mm])	DEPTH (Inches [mm])	HEIGHT (Inches [mm])
MV2UA6AA115E1ABB	2.4	2.4	115	500	11.2	EST. 7000 [3175]	91.0 [2312]	41.5 [1055]	109.3 [2776]
MV2UA6AA135E1ABB			135	600	13.4				
MV2UD6DA115E1ABB	4.16	4.16	115	900	20.1	EST. 7559 [3429]	91.0 [2312]	41.5 [1055]	109.3 [2776]
MV2UD6DA125E1ABB			125	1000	22.4				

* DOES NOT INCLUDE SHIPPING CONTAINER



NOTES:
 1. FOR REFERENCE UNLESS PROPERLY ENDORSED. FOR ADDITIONAL DETAILS AND SPECIFICATIONS, CONSULT YASKAWA AMERICA, INC.
 2. DIMENSIONS ARE IN INCHES[MILLIMETERS]
 3. USE APPROPRIATE TYPE RATED HUBS OR FITTINGS TO MAINTAIN ENCLOSED RATING.
 4. HATCHED AREA INDICATES PERMISSIBLE CABLE/CONDUIT ENTRANCE AREA.

REV.	DESCRIPTION	ECR#	DRAWN BY	DATE
01	<PG 1> ADDED E-STOP & 3 OPERATORS. <PG 2> ADDED REF. DESIGNATORS	8397	JSK	2/5/2018
00	INITIAL RELEASE	-	CJM	6/7/2016

jim_kasprovich Tuesday, February 6, 2018 3:22:26 PM

ENCLOSURE	UL TYPE 1
COLOR	OUTSIDE: BEIGE, MUNSELL 5Y7/1 (SEMI GLOSS) INSIDE: BEIGE, MUNSELL 5Y7/1 (SEMI GLOSS)

ITEM NO.	NAME
(XFMR)	TRANSFORMER CABINET
(CELL)	CELL CABINET
(CTRL)	CONTROL CABINET
(SG)	SWITCH GEAR CABINET
(LV)	LOW VOLTAGE CABINET

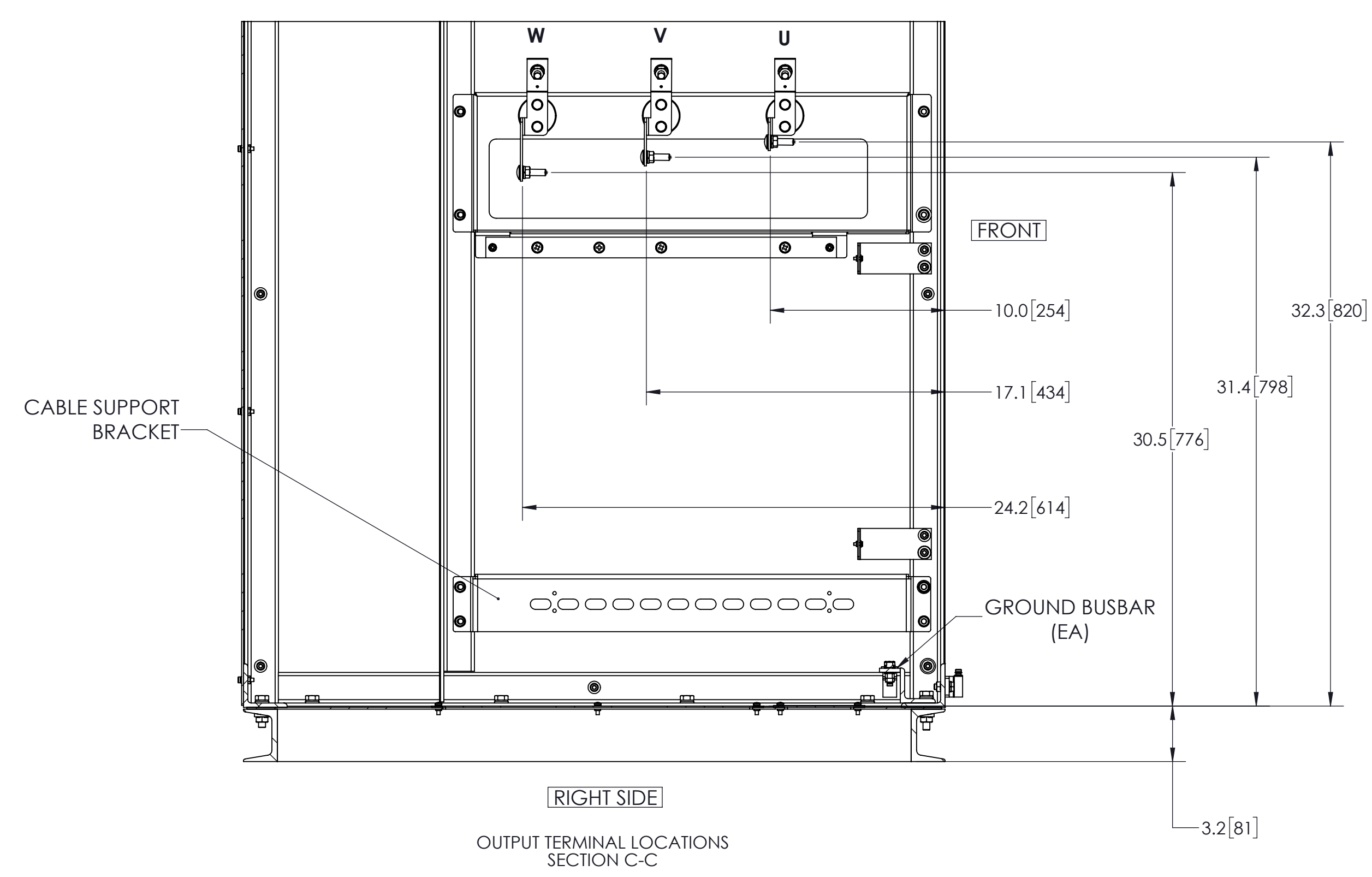
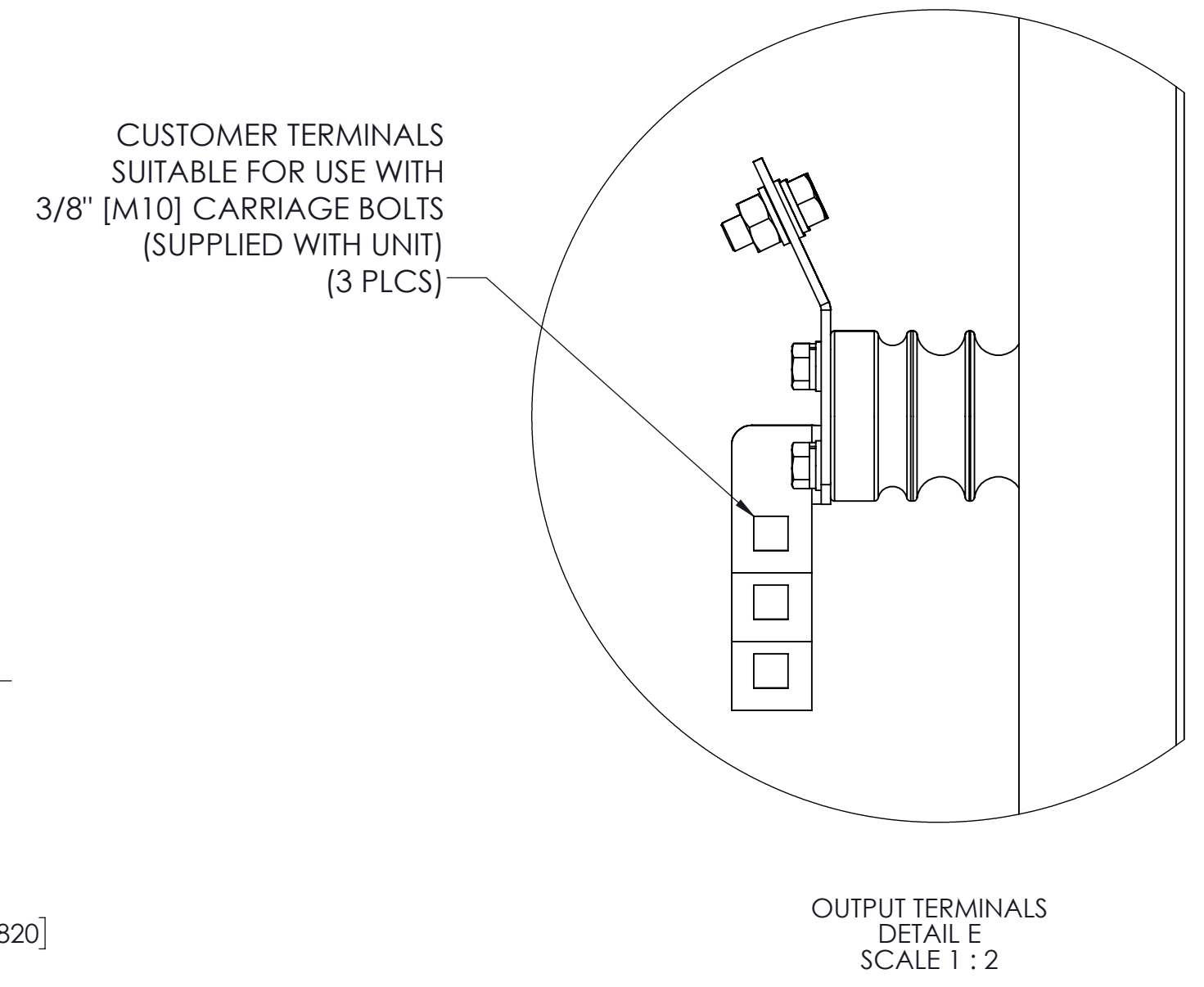
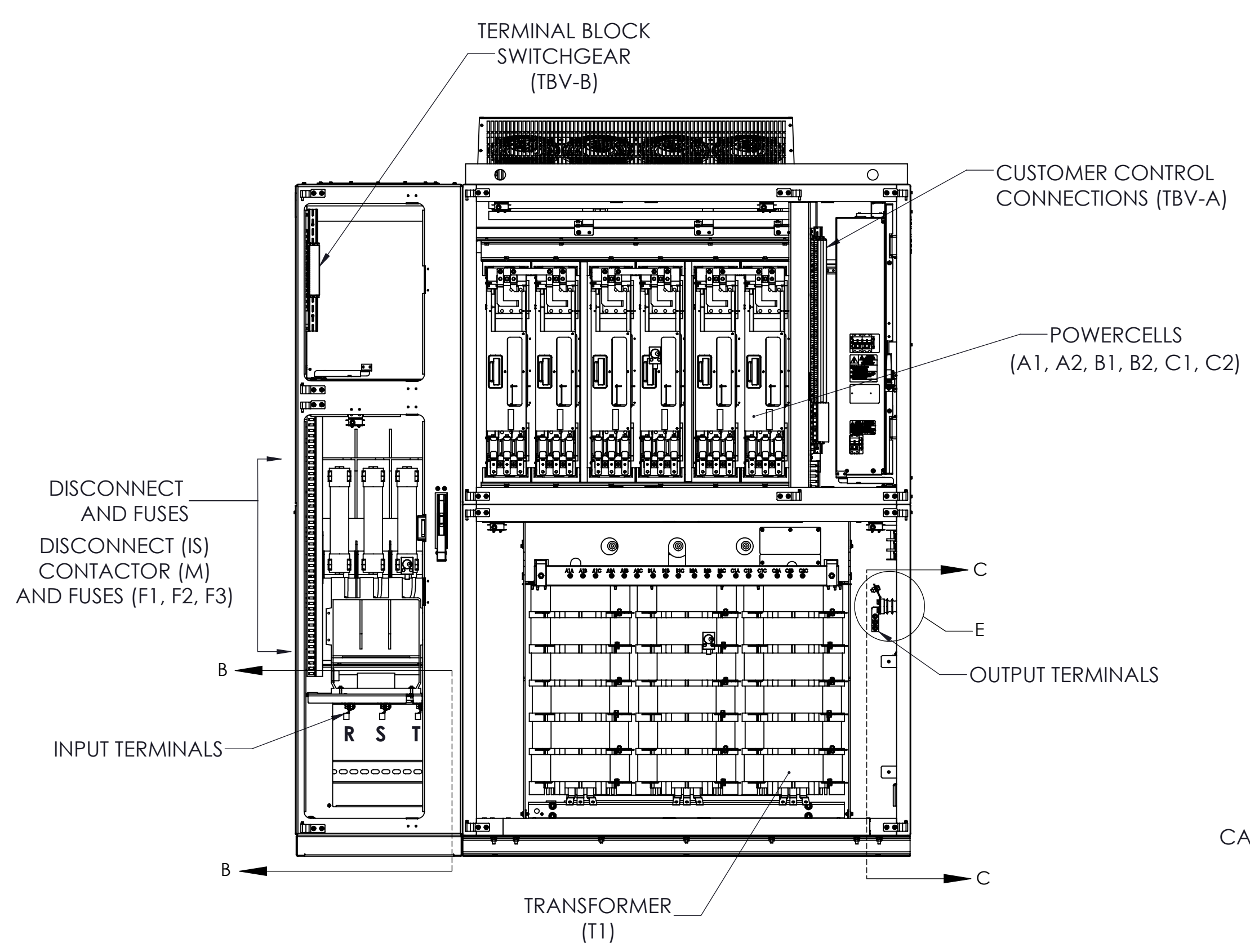
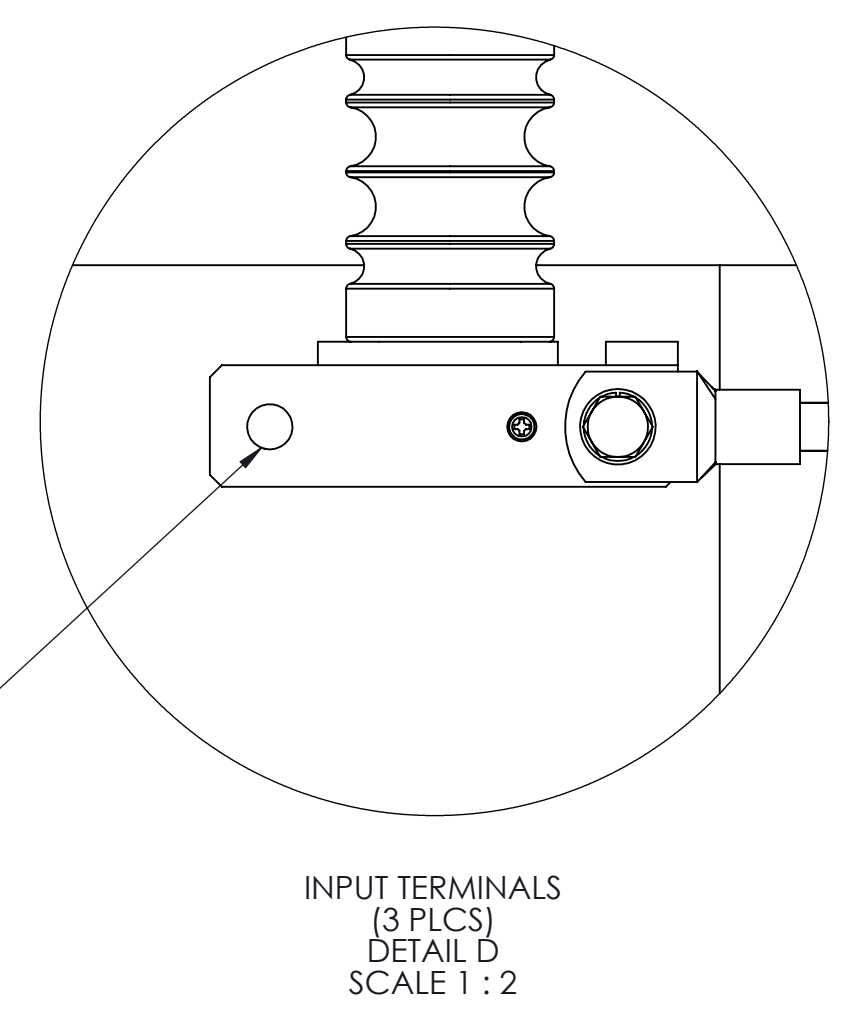
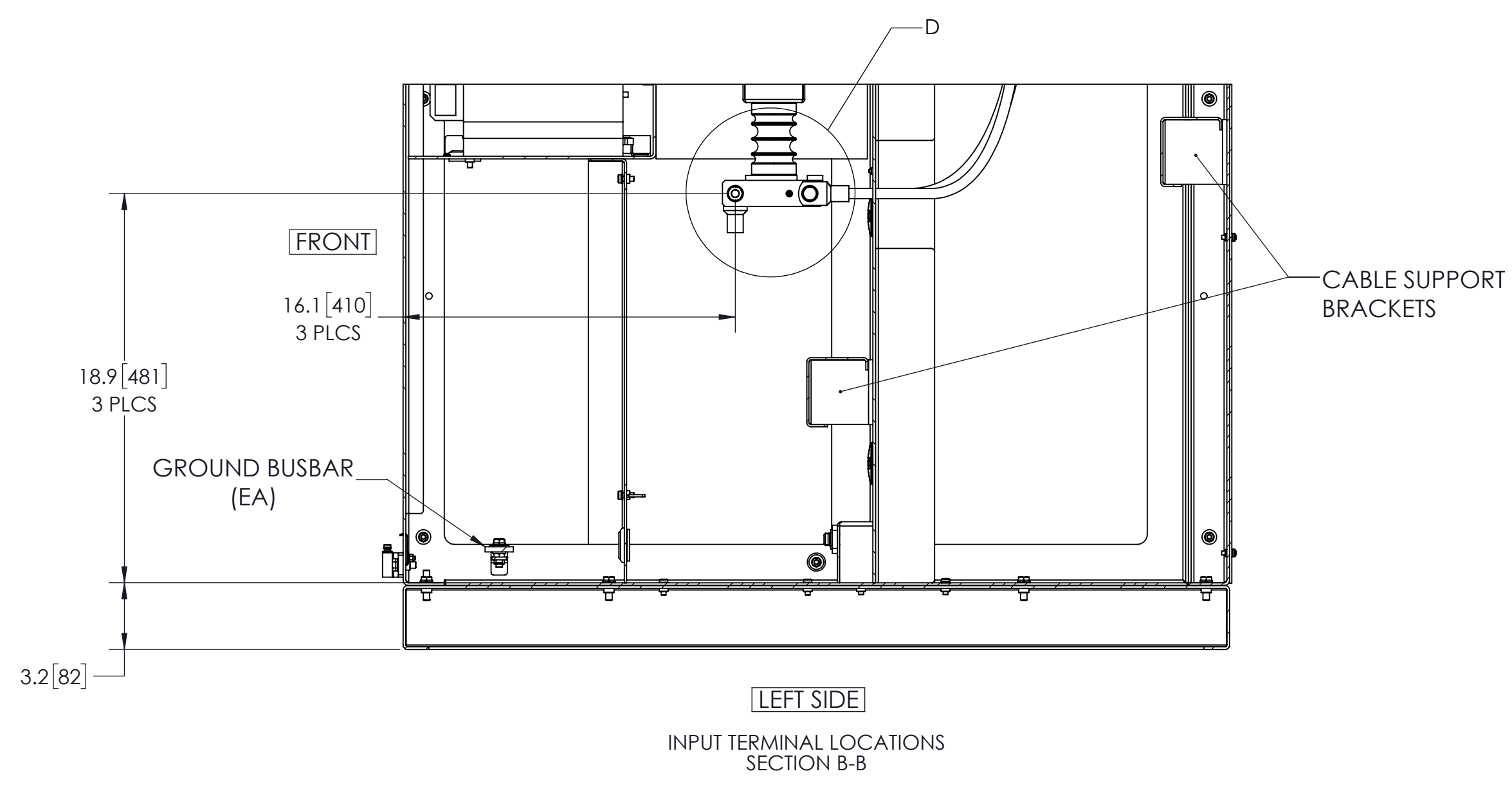
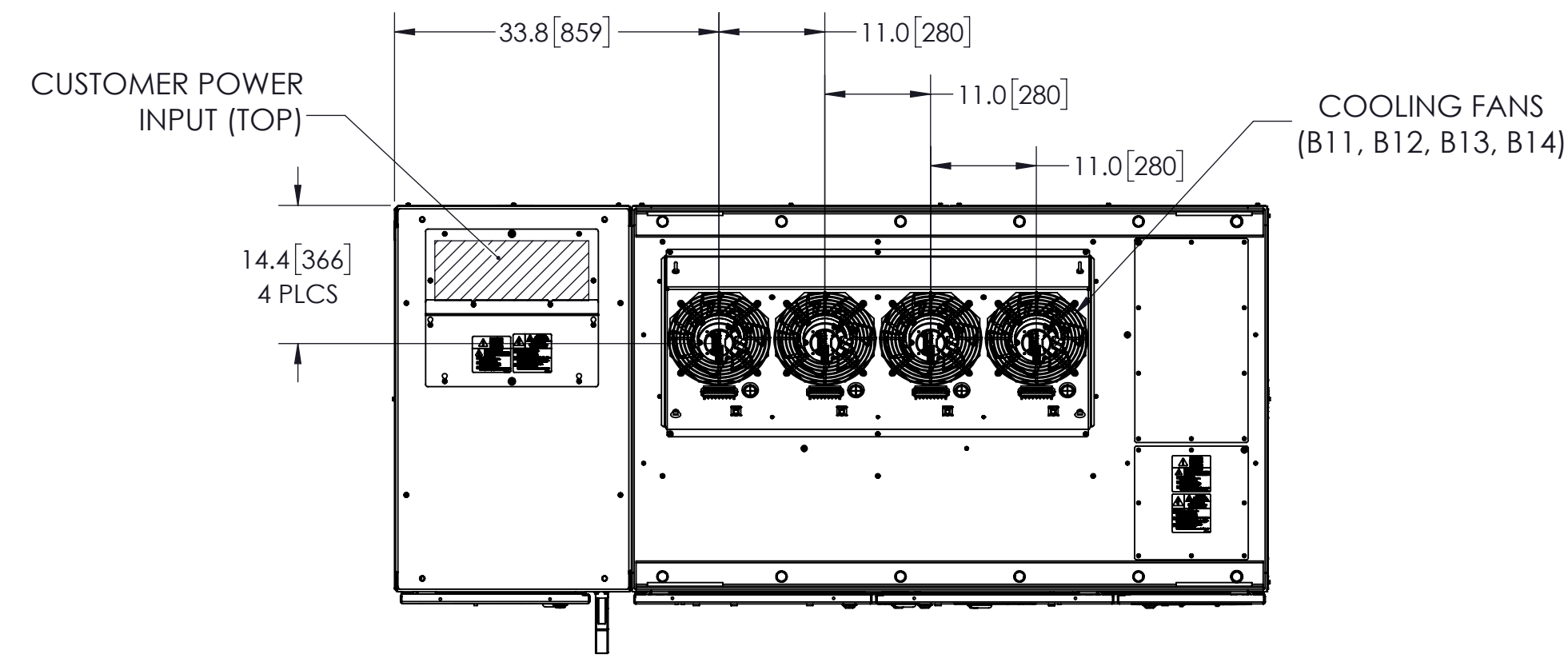
YASKAWA

THIS DOCUMENT AND INFORMATION CONTAINED IN IT ARE CONFIDENTIAL, AND CANNOT BE COPIED OR DISCLOSED IN WHOLE OR IN PART WITHOUT THE EXPRESS WRITTEN CONSENT OF YASKAWA AMERICA INC.

DRAWN: C. Michalek	DATE: 06/07/2016	TITLE: DIMENSIONAL DRAWING, MV1000, FRM 1, W SG
CHECKED: S. Tomczak	DATE: 06/13/2016	
APPROVED: B. Johnson	DATE: 06/28/2016	
ORIGINAL DESIGN: C. Michalek	DATE: 06/07/2016	

SIZE	REVISION	PAGE
D	01	1 OF 2

DRAWING #: DD.MV1K.FR1.N1.SG.02



NOTES:

- FOR REFERENCE UNLESS PROPERLY ENDORSED. FOR ADDITIONAL DETAILS AND SPECIFICATIONS, CONSULT YASKAWA AMERICA, INC.
- DIMENSIONS ARE IN INCHES[MILLIMETERS]
- USE APPROPRIATE TYPE RATED HUBS OR FITTINGS TO MAINTAIN ENCLOSURE RATING.
- HATCHED AREA INDICATES PERMISSIBLE CABLE/CONDUIT ENTRANCE AREA.

YASKAWA		DRAWN: C. Michalek	DATE: 06/07/2016	TITLE: DIMENSIONAL DRAWING, MV1000, FRM 1, W SG
		CHECKED: S. Tomczak	DATE: 06/13/2016	
		TECH: -	DATE: -	
		APPROVED: B. Johnson	DATE: 06/28/2016	
		ORIGINAL DESIGN: C. Michalek	DATE: 06/07/2016	
THIS DOCUMENT AND INFORMATION CONTAINED IN IT ARE CONFIDENTIAL, AND CANNOT BE COPIED OR DISCLOSED IN WHOLE OR IN PART WITHOUT THE EXPRESS WRITTEN CONSENT OF YASKAWA AMERICA INC.		MATERIAL#	SEE TABLE	
		SIZE D	REVISION 01	PAGE 2 OF 2
		DRAWING #:		DD.MV1K.FR1.N1.SG.02