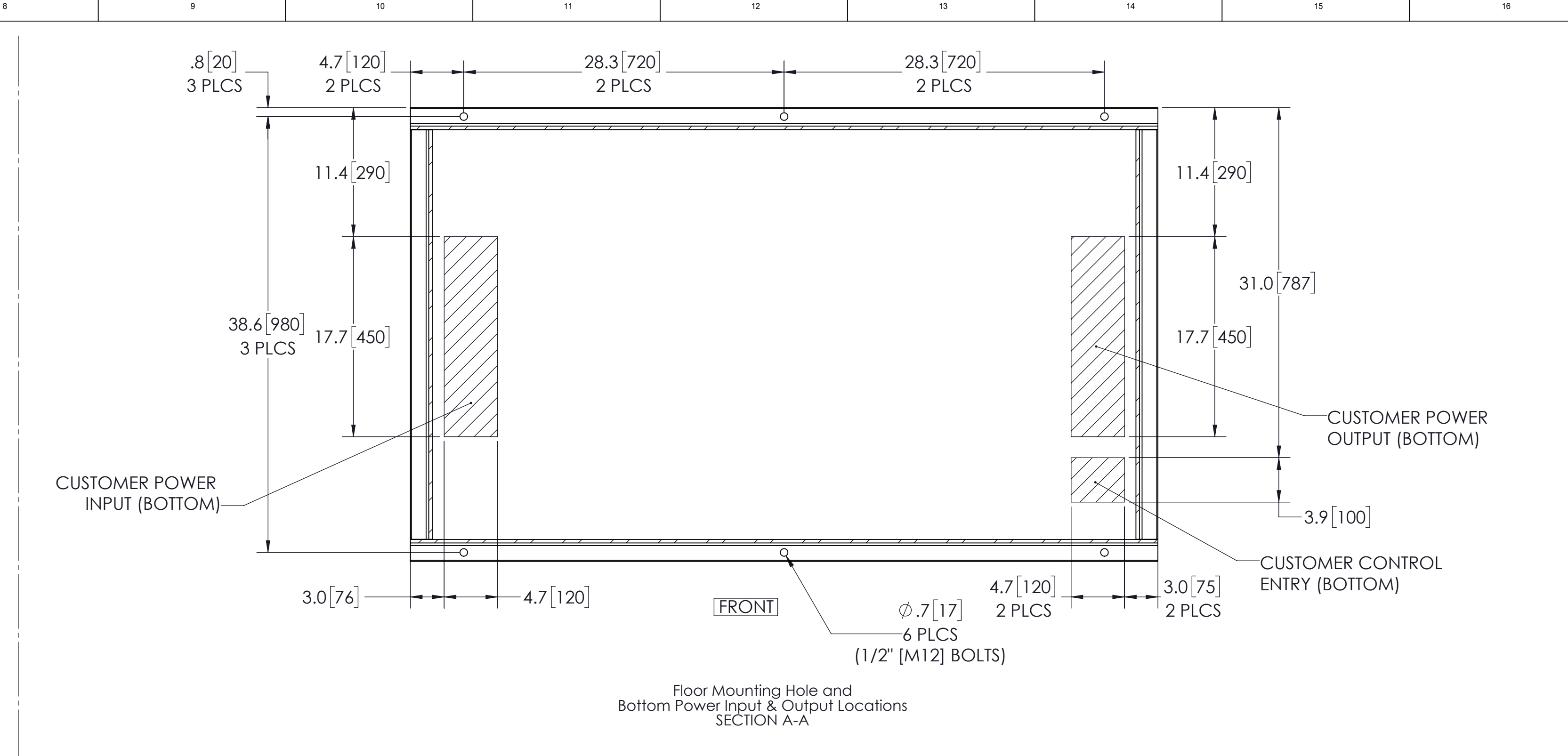
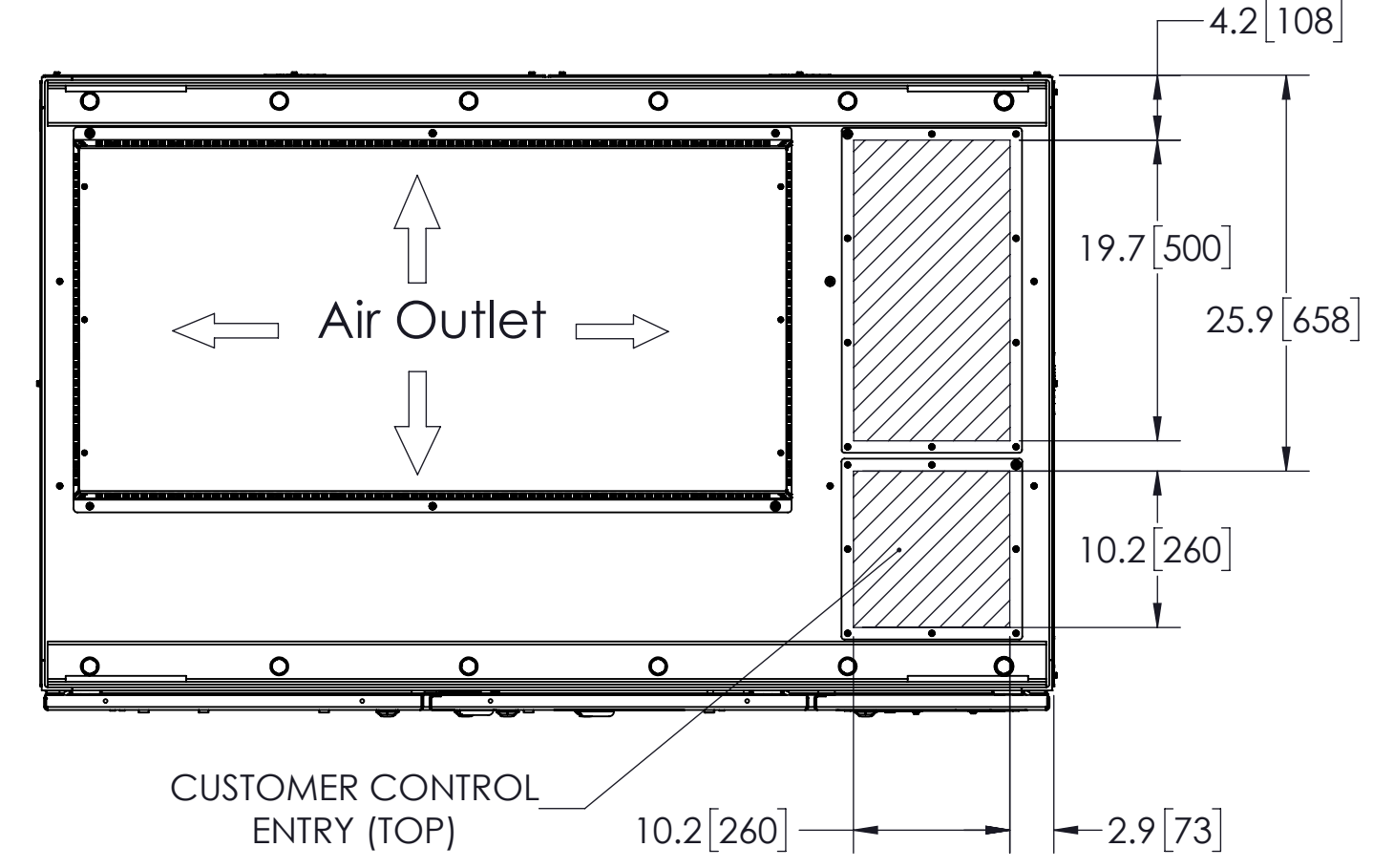
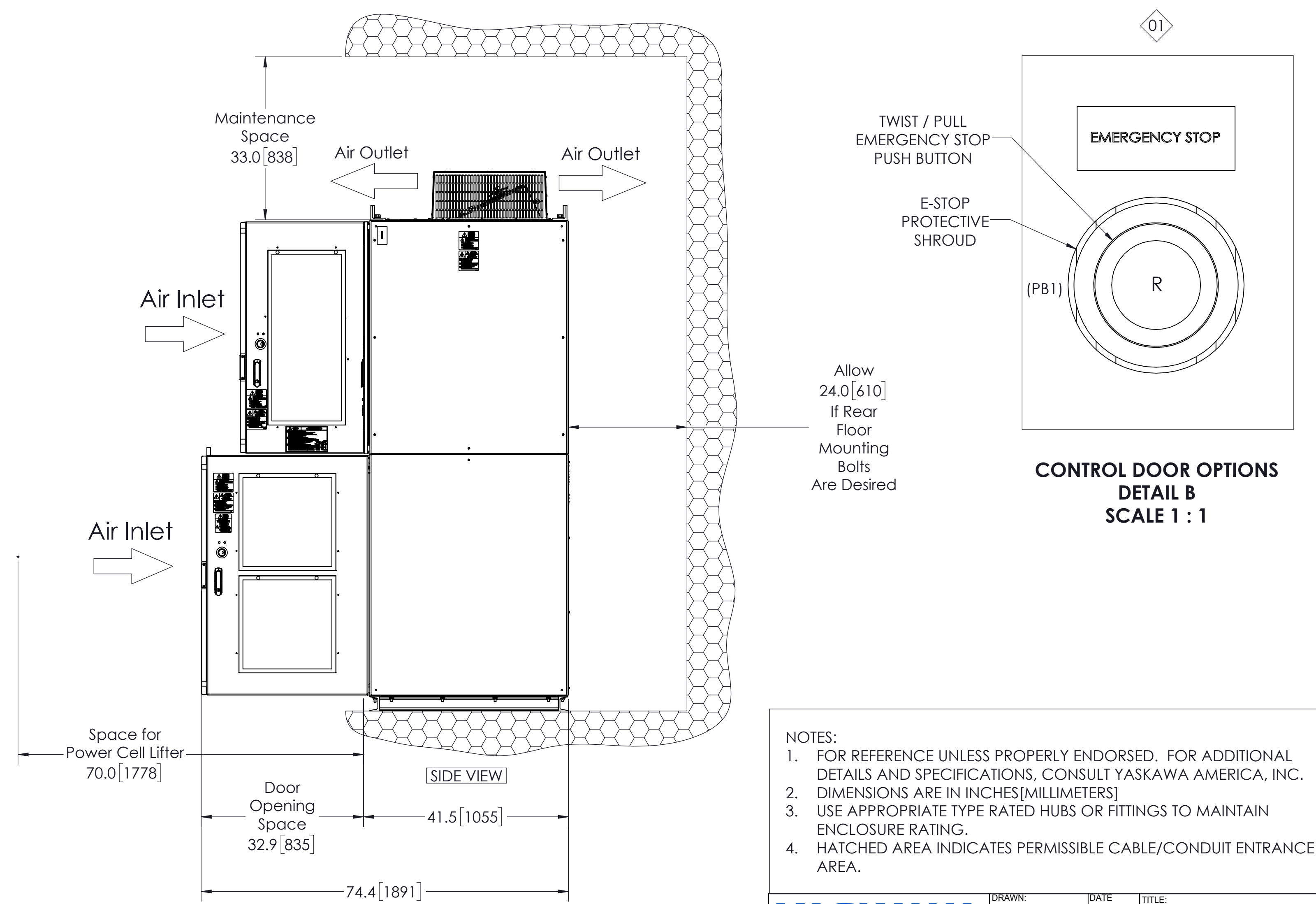
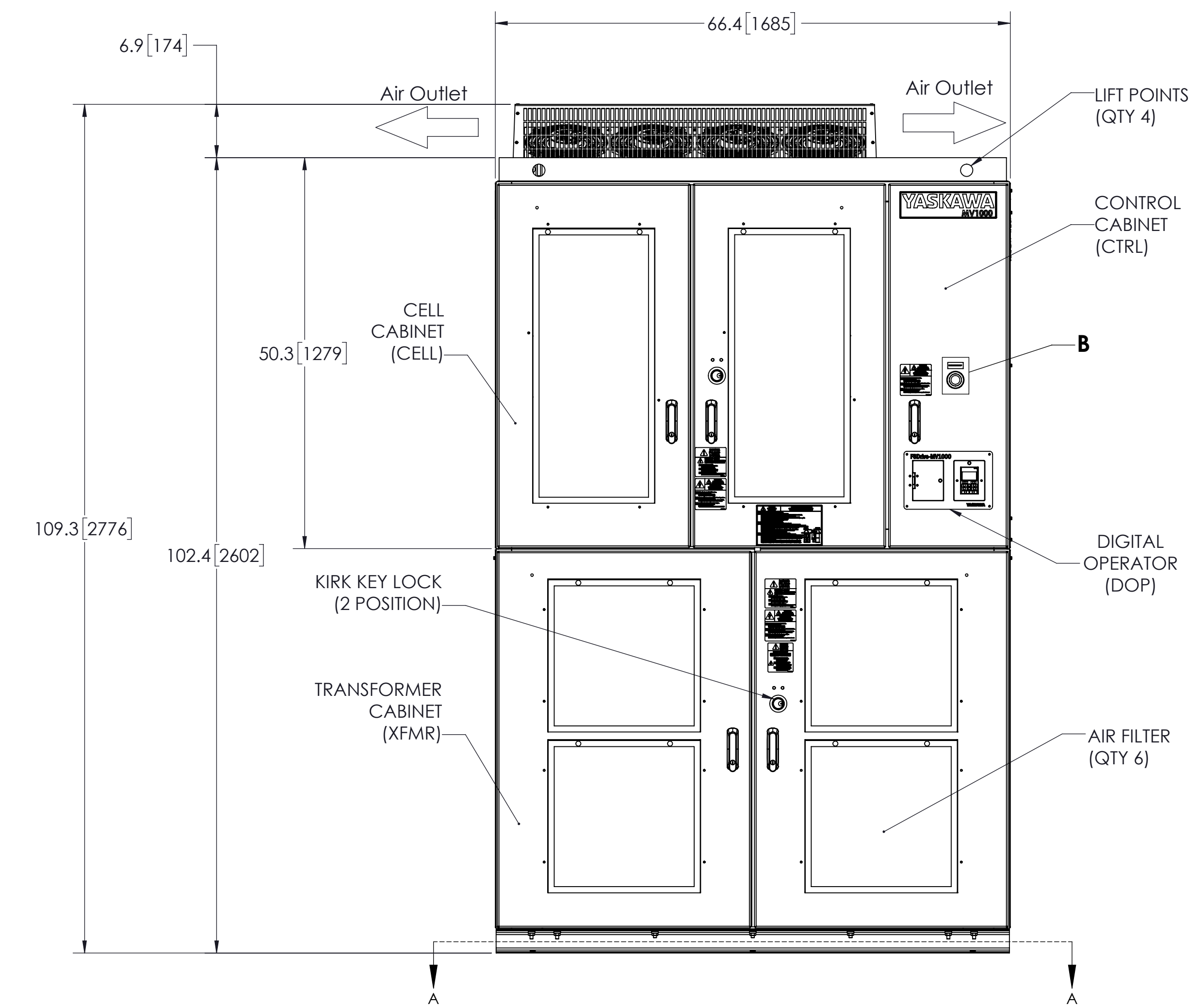


| MODEL # | INPUT VOLTAGE (kV) | VOLTAGE CLASS (kV) (MOTOR) | DRIVE CURRENT RATING (A) | RATED POWER (HP) | HEAT DISSIPATION (kW) | TOTAL WEIGHT (lbs)[kg]* | WIDTH (Inches [mm]) | DEPTH (Inches [mm]) | HEIGHT (Inches [mm]) |
|------------------|--------------------|----------------------------|--------------------------|------------------|-----------------------|-------------------------|---------------------|---------------------|----------------------|
| MV2UA6AA115E1ABA | 2.4 | 2.4 | 115 | 500 | 11.2 | EST. 6800 [3084] | 66.4 [1685] | 41.5 [1055] | 109.3 [2776] |
| MV2UA6AA135E1ABA | | | 135 | 600 | 13.4 | | | | |
| MV2UD6DA115E1ABA | 4.16 | 4.16 | 115 | 900 | 20.1 | EST. 7359 [3338] | 66.4 [1685] | 41.5 [1055] | 109.3 [2776] |
| MV2UD6DA125E1ABA | | | 125 | 1000 | 22.4 | | | | |

* DOES NOT INCLUDE SHIPPING CONTAINER



Floor Mounting Hole and Bottom Power Input & Output Locations SECTION A-A



CONTROL DOOR OPTIONS
DETAIL B
SCALE 1 : 1

- NOTES:
- FOR REFERENCE UNLESS PROPERLY ENDORSED. FOR ADDITIONAL DETAILS AND SPECIFICATIONS, CONSULT YASKAWA AMERICA, INC.
 - DIMENSIONS ARE IN INCHES[MILLIMETERS]
 - USE APPROPRIATE TYPE RATED HUBS OR FITTINGS TO MAINTAIN ENCLOSURE RATING.
 - HATCHED AREA INDICATES PERMISSIBLE CABLE/CONDUIT ENTRANCE AREA.

| REV. | DESCRIPTION | ECR# | DRAWN BY | DATE |
|------|--|------|----------|----------|
| 01 | <PG 1> ADDED E-STOP, <PG 2> ADDED REF. DESIGNATORS | 8397 | JSK | 2/5/2018 |
| 00 | INITIAL RELEASE | - | CJM | 8/8/2016 |

jim_kasprovich Tuesday, February 6, 2018 1:20:41 PM

| ENCLOSURE | UL TYPE 1 |
|-----------|---|
| COLOR | OUTSIDE: BEIGE, MUNSELL 5Y7/1 (SEMI GLOSS) INSIDE: BEIGE, MUNSELL 5Y7/1 (SEMI GLOSS) |

| ITEM NO. | NAME |
|----------|---------------------|
| (XFMR) | TRANSFORMER CABINET |
| (CELL) | CELL CABINET |
| (CTRL) | CONTROL CABINET |

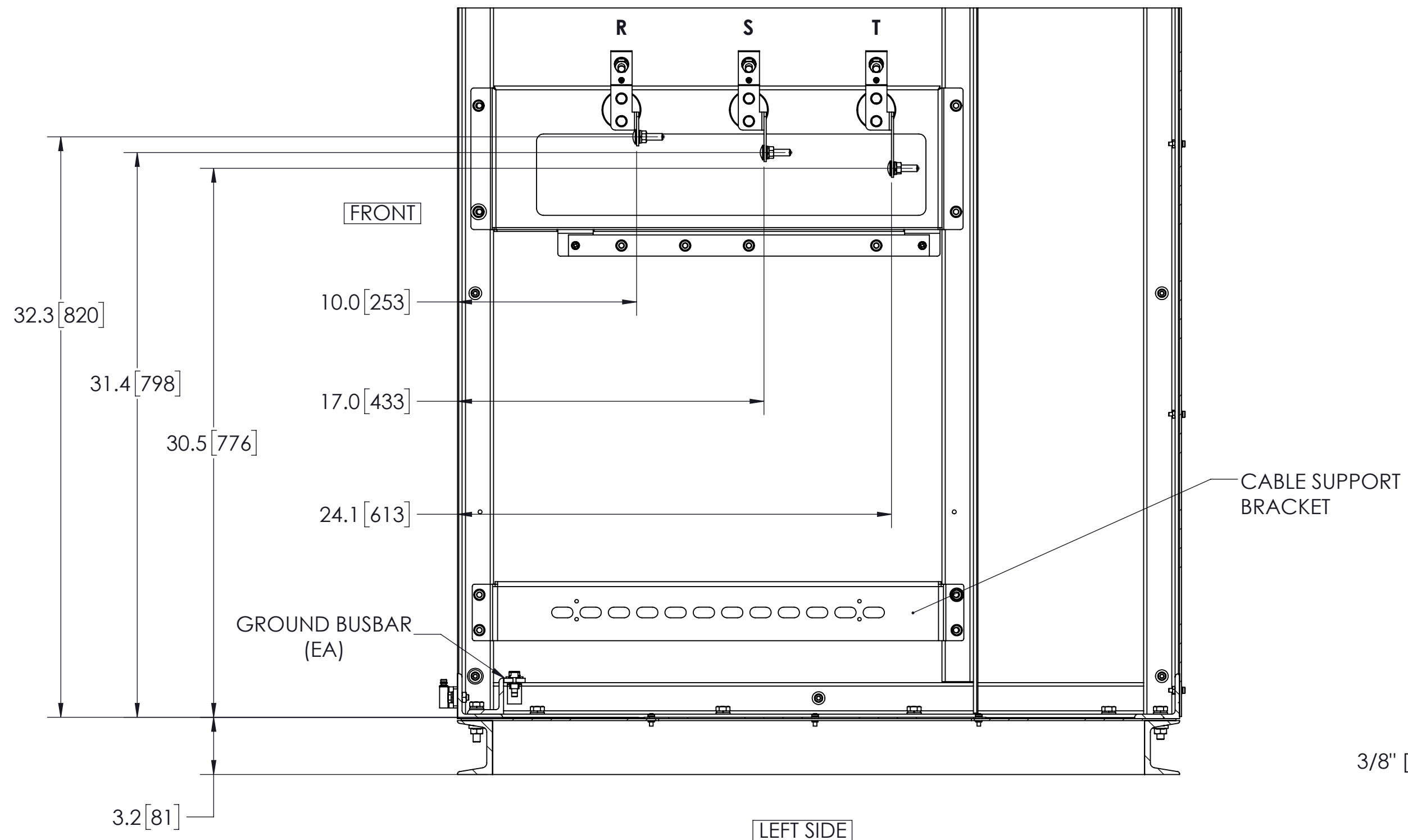
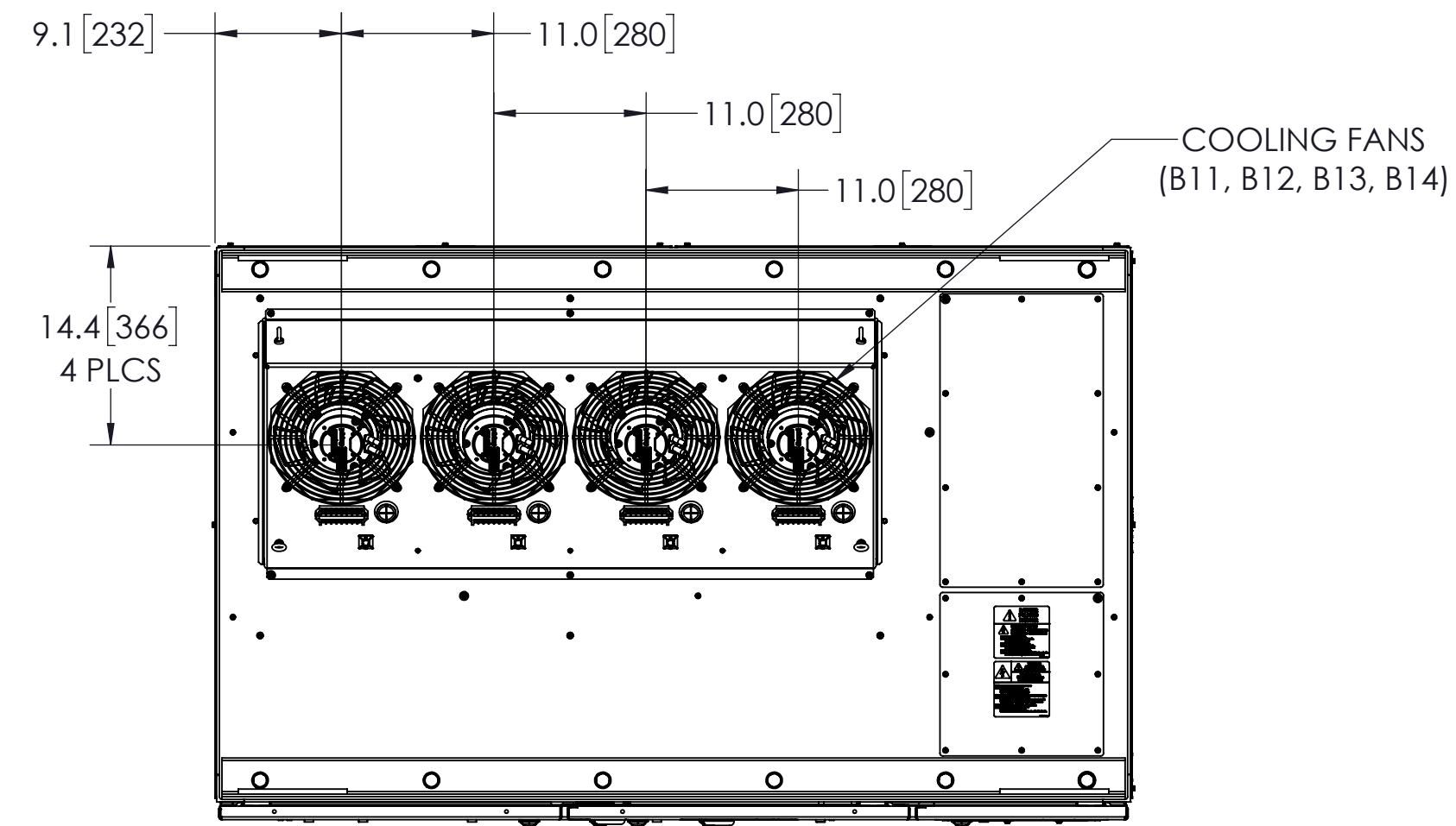
YASKAWA

| | | |
|------------------------------|----------------|---|
| DRAWN: C. Michalek | DATE: 8/8/2016 | TITLE: DIMENSIONAL DRAWING, MV1000, FRM 1, W/O SG |
| CHECKED: S. Tomczak | DATE: 8/9/2016 | |
| APPROVED: B. Johnson | DATE: 8/9/2016 | |
| ORIGINAL DESIGN: C. Michalek | DATE: 8/8/2016 | |

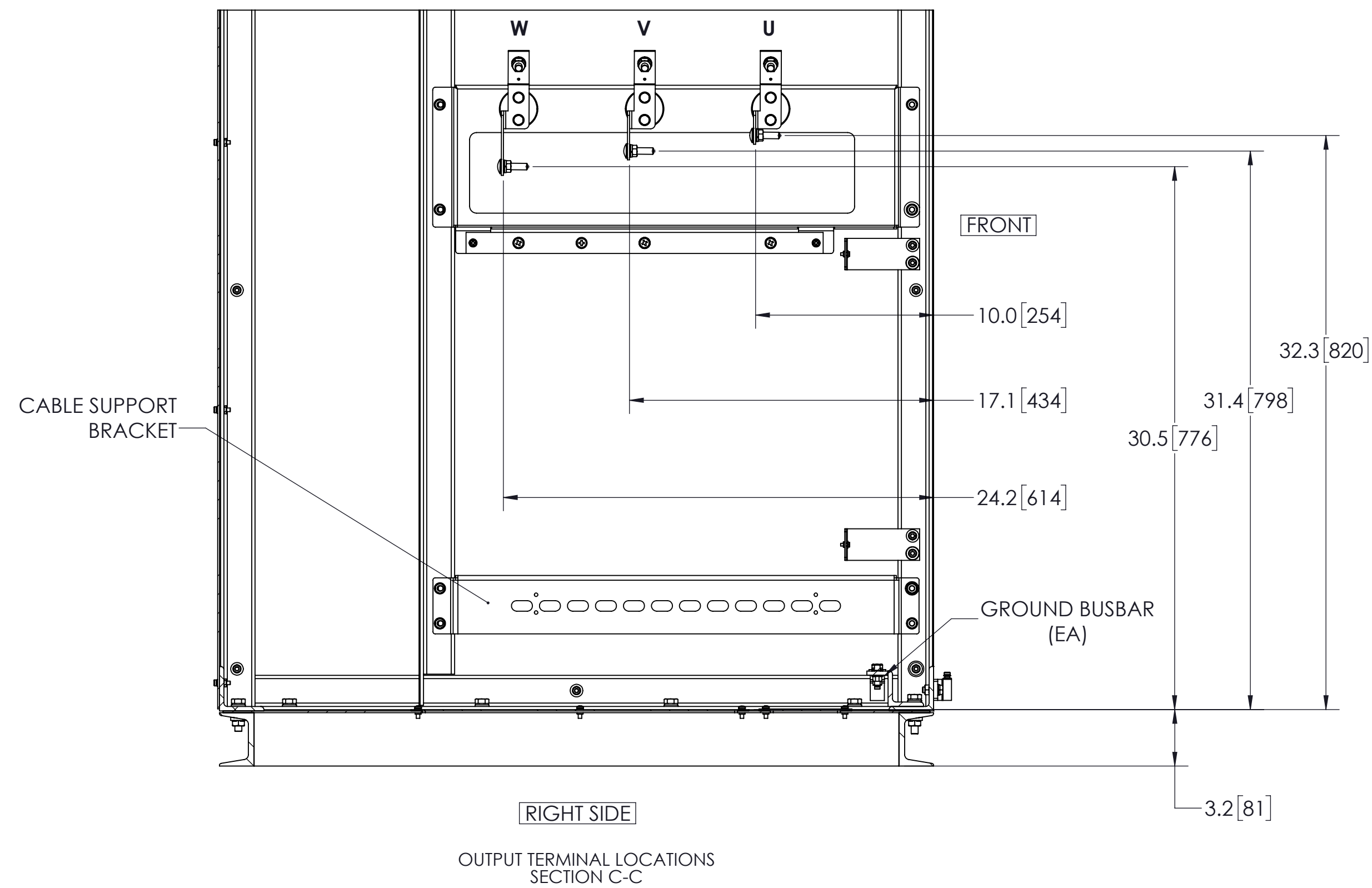
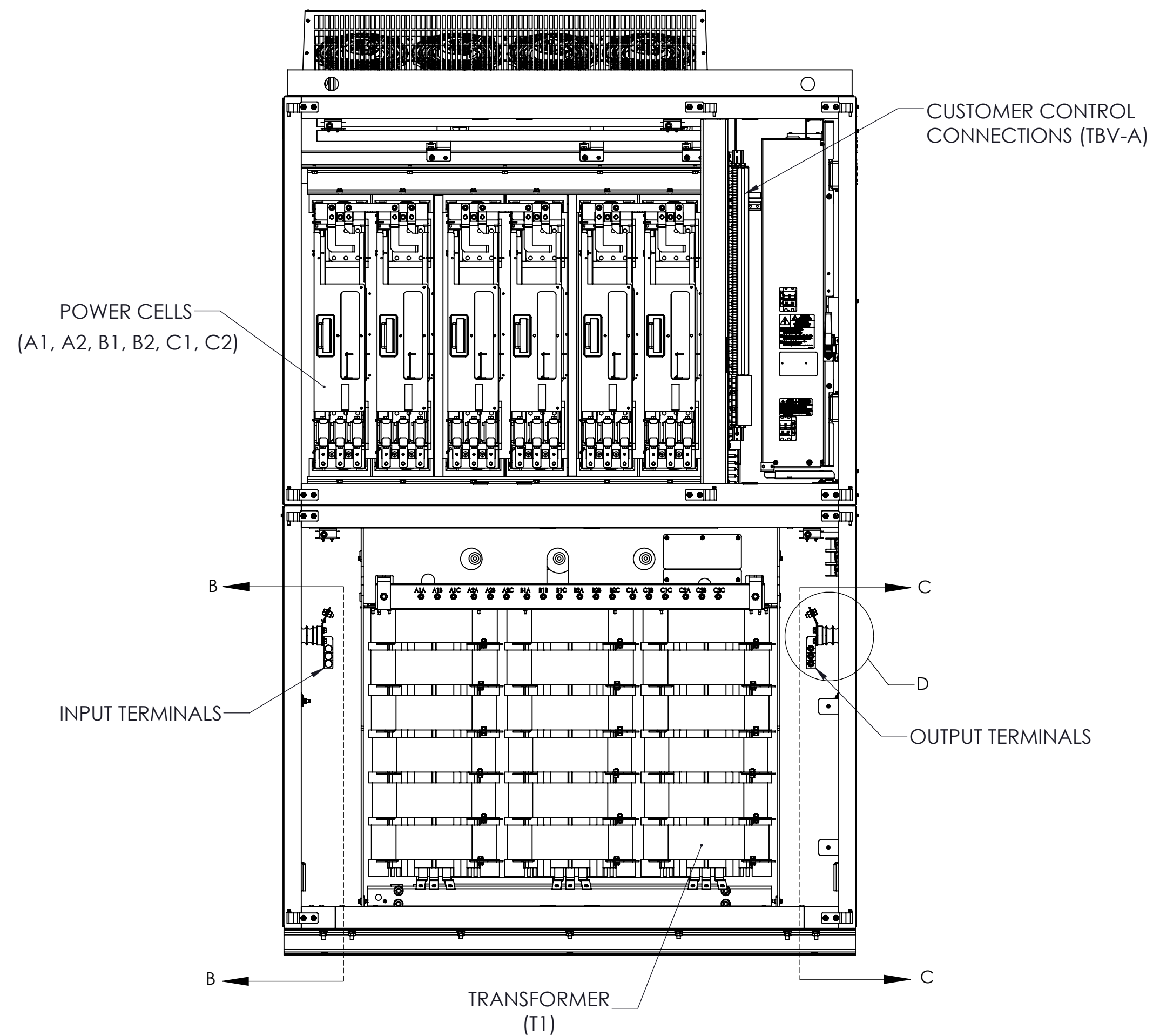
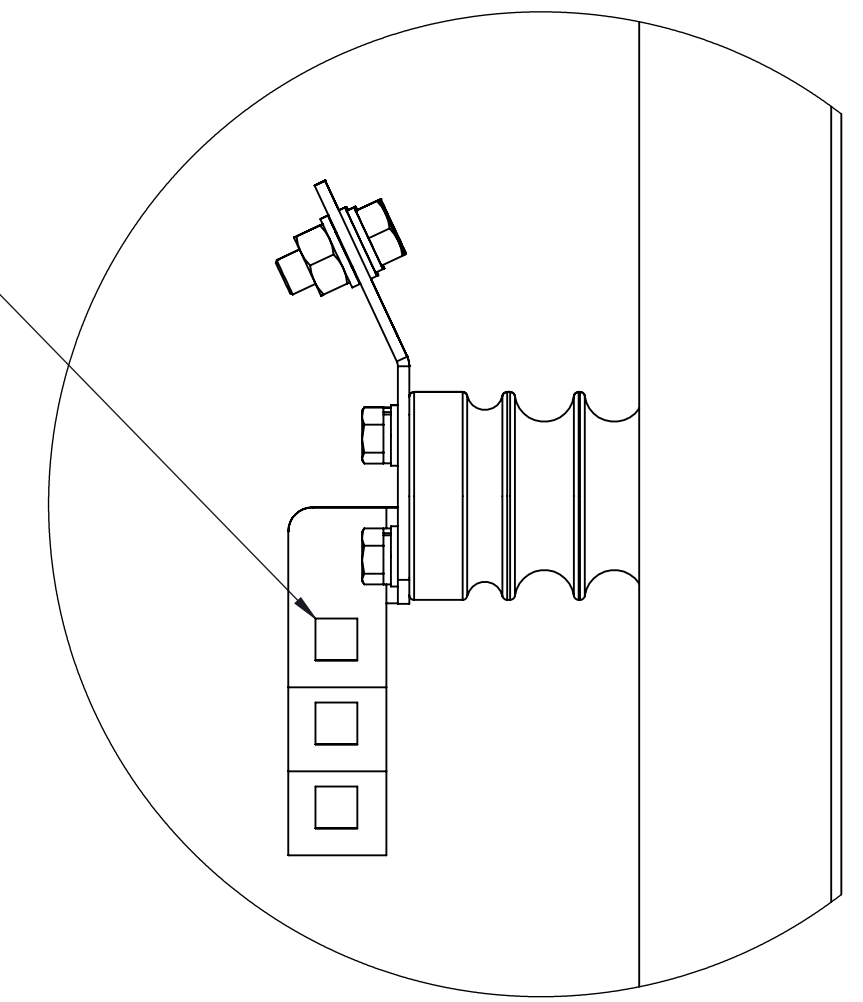
THIS DOCUMENT AND INFORMATION CONTAINED HEREIN IS CONFIDENTIAL, AND CANNOT BE COPIED OR DISCLOSED IN WHOLE OR IN PART WITHOUT THE EXPRESS WRITTEN CONSENT OF YASKAWA AMERICA INC.

| MATERIAL# | SEE TABLE |
|-----------|-------------|
| SIZE D | REVISION 01 |
| PAGE 1 | OF 2 |

DRAWING #: DD.MV1K.FR1.N1.NG.02



CUSTOMER TERMINALS SUITABLE FOR USE WITH 3/8" [M10] CARRIAGE BOLTS (SUPPLIED WITH UNIT) (6 PLCS)



- NOTES:
- FOR REFERENCE UNLESS PROPERLY ENDORSED. FOR ADDITIONAL DETAILS AND SPECIFICATIONS, CONSULT YASKAWA AMERICA, INC.
 - DIMENSIONS ARE IN INCHES[MILLIMETERS]
 - USE APPROPRIATE TYPE RATED HUBS OR FITTINGS TO MAINTAIN ENCLOSURE RATING.
 - HATCHED AREA INDICATES PERMISSIBLE CABLE/CONDUIT ENTRANCE AREA.

| | | | | | |
|----------------|--|------------------------------|----------------|---|-------------|
| YASKAWA | | DRAWN: C. Michalek | DATE: 8/8/2016 | TITLE: DIMENSIONAL DRAWING, MV1000, FRM 1, W/O SG | |
| | | CHECKED: S. Tomczak | DATE: 8/9/2016 | | |
| | | TECH: - | DATE: - | MATERIAL# | SEE TABLE |
| | | APPROVED: B. Johnson | DATE: 8/9/2016 | SIZE D | REVISION 01 |
| | | ORIGINAL DESIGN: C. Michalek | DATE: 8/8/2016 | PAGE 2 OF 2 | |
| | | | | DRAWING #: DD.MV1K.FR1.N1.NG.02 | |