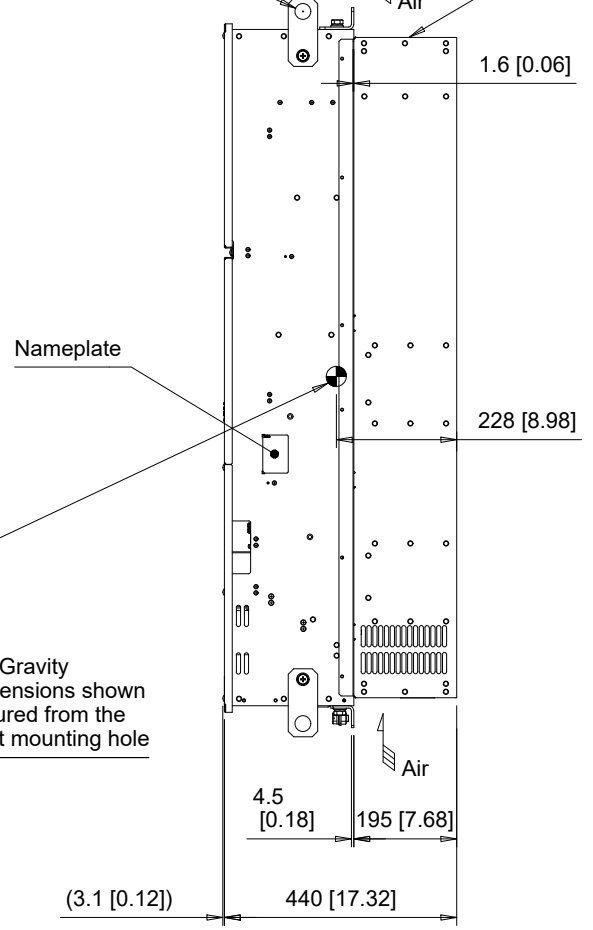


Note: Spreader bar required to avoid damage during lifting

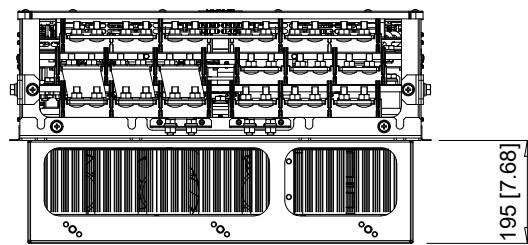
(4)-Lifting Holes Ø30 [Ø1.18]

Cooling fan location

Air



The dimensions shown are for an IP00 Drive that has been converted to a IP00/Backside Type 12 Drive by adding the parts from Type 12 heatsink external mounting kit number part number ZPSD-700-EH12-FR12



C/C: GA80□	INPUT VOLTAGE 3-PHASE (VAC)	WEIGHT Kg (lb)	COOLING FANS
4810□□□	380 TO 480	365 (803)	4
4930□□□		365 (803)	4
4H11□□□		370 (814)	4
4H12□□□		370 (814)	4

□ denotes A-Z

1	ADDED TERMINAL DIAGRAMS
0	INITIAL RELEASE

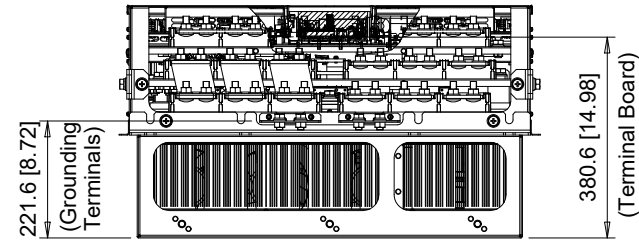
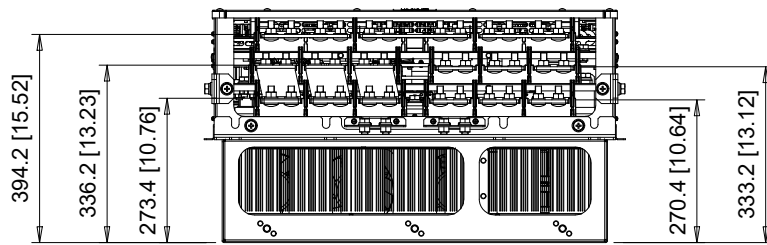
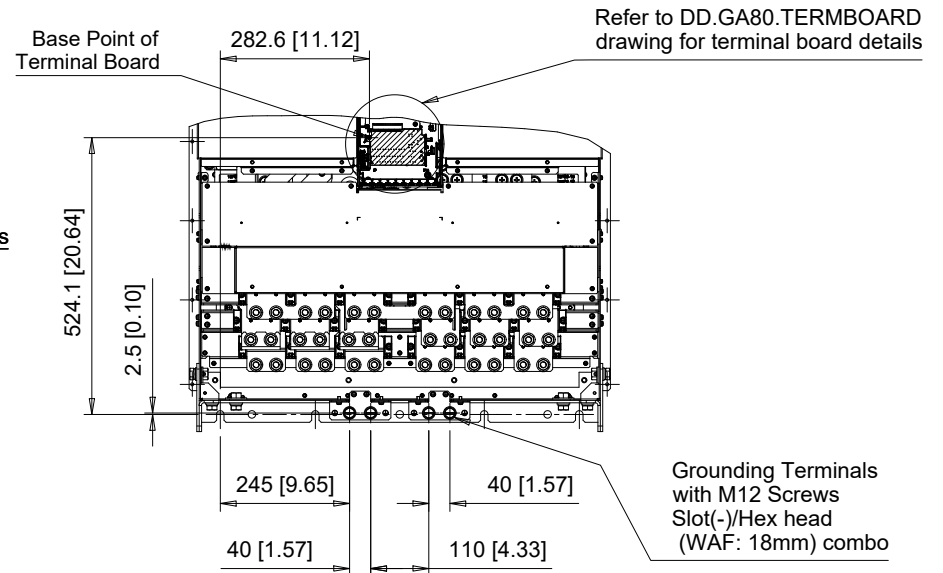
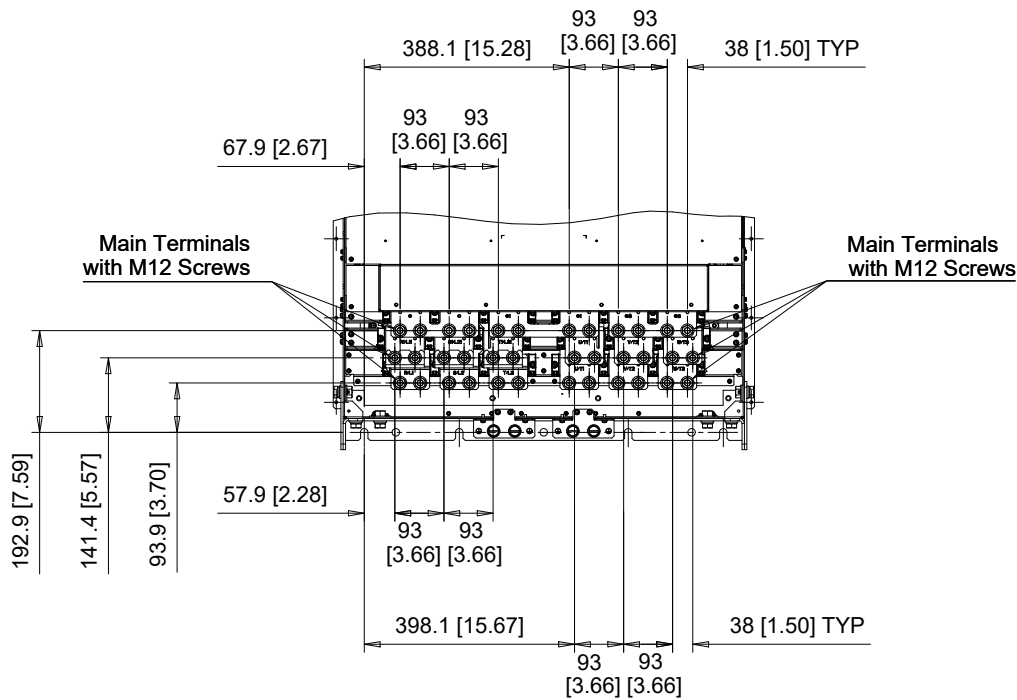


DRWN.	J. MATTAS	7-25-23
CHKD.	J. PIOTROWSKI	8-10-23
TECH.	L. UDDIN	8-15-23
APRV.	J. CAIRO	8-16-23

TITLE
GA800 DIMENSION DRAWING
FRAME SIZE 12
BACKSIDE TYPE 12 ENCLOSURE

SIZE	A	PAGE	1 OF 3
DWG.NO.	DD.GA80.FR12.FLNG		

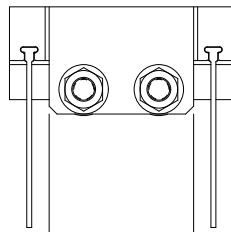
REV
1



Simplified Terminal Diagrams (Scale 1:4)

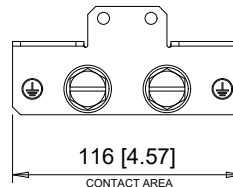
77 [3.03]
MAX BETWEEN BARRIERS

Diagram A



73 [2.87]
CONTACT AREA

Diagram B



116 [4.57]
CONTACT AREA

C/C: GA80□	TERMINAL SYMBOL	TERMINAL SCREW	CLAMPING TORQUE N.m. (lb.in.)	TERMINAL DIAGRAM
4810□□□	R/L1, S/L2, T/L3,	M12	32 - 40 (283 - 354)	A
4930□□□	R1/L11, S1/L21, T1/L31	M12	32 - 40 (283 - 354)	A
4H11□□□	U/T1, V/T2, W/T3,	M12	32 - 40 (283 - 354)	A
4H12□□□	U/T1, V/T2, W/T3	M12	32 - 40 (283 - 354)	A
	-, +1, +3	M12	32 - 40 (283 - 354)	A
	-, +1, +3	M12	32 - 40 (283 - 354)	B

□ Denotes A-Z

Note1: Refer to applicable codes and standards for proper wire type and size.

Note2: The drive is equipped from the factory with jumpers short-circuiting terminals R/L1-R1/L11, S/L2-S1/L21, and T/L3-T1/L31.

Remove the jumpers when wiring the drive for 12 pulse operation.

1	ADDED TERMINAL DIAGRAMS
0	INITIAL RELEASE

YASKAWA

UNITS MM [IN]
SCALE 1:15

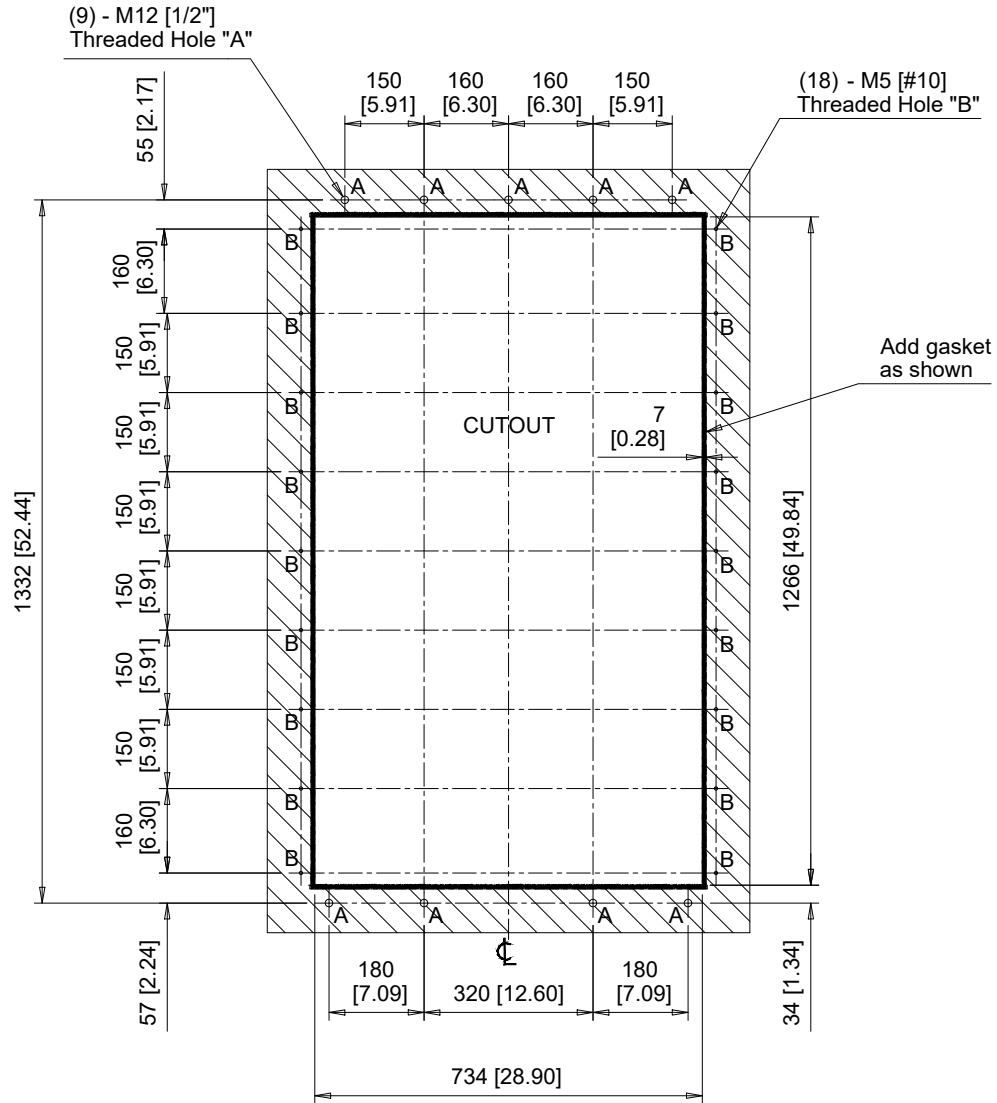
DRWN.	J. MATTAS	7-25-23
CHKD.	J. PIOTROWSKI	8-10-23
TECH.	L. UDDIN	8-15-23
APRV.	J. CAIRO	8-16-23

TITLE
GA800 DIMENSION DRAWING
FRAME SIZE 12
BACKSIDE TYPE 12 ENCLOSURE

SIZE A
PAGE 2 OF 3
DWG.NO.
DD.GA80.FR12.FLNG

REV
1

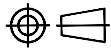
Panel Cutout



Notes:

Exposed heatsink minimum clearance D = 200 [7.87].
 Refer to Type 12 heatsink external installation manual for additional details.

YASKAWA



DRWN.	J. MATTAS	7-25-23
CHKD.	J. PIOTROWSKI	8-10-23
TECH.	L. UDDIN	8-15-23
APRV.	J. CAIRO	8-16-23

TITLE	GA800 DIMENSION DRAWING FRAME SIZE 12 BACKSIDE TYPE 12 ENCLOSURE
-------	--

SIZE	A	PAGE	3 OF 3
DWG.NO.	DD.GA80.FR12.FLNG		

REV	1
-----	---

1	ADDED TERMINAL DIAGRAMS
0	INITIAL RELEASE