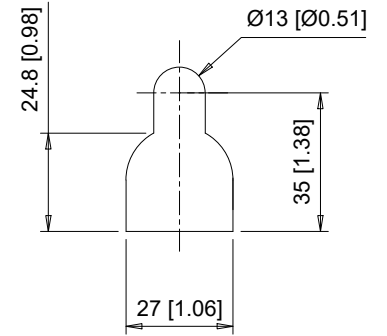
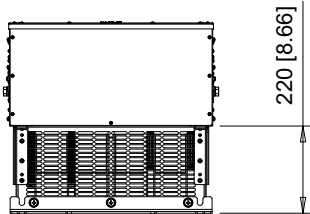


Note: Spreader bar required to avoid damage during lifting



Detail A
Top mounting hole dimensions
Scale 1:2

The dimensions shown are for an IP20 Type Drive that has been converted to a NEMA Type 1 Drive by adding the parts from NEMA 1 Kit part number UUX001701



C/C: GA80□	INPUT VOLTAGE 3-PHASE (VAC)	WEIGHT Kg (lb)	COOLING FANS
4477□□□	380 TO 480	236 (520)	2
4568□□□		236 (520)	2
4605□□□		255 (561)	2
4720□□□		253 (557)	3
5382□□□	500 TO 600	242 (533)	3
5412□□□		242 (533)	3
5472□□□		238 (524)	3

□ denotes A-Z

3	CHANGED DWG NUMBER, REV WEIGHTS PREVIOUS NUMBER WAS DD.GA80.FR11.N1
2	ADDED 600V DRIVES
1	REVISED PANEL CUTOUT
0	INITIAL RELEASE

YASKAWA

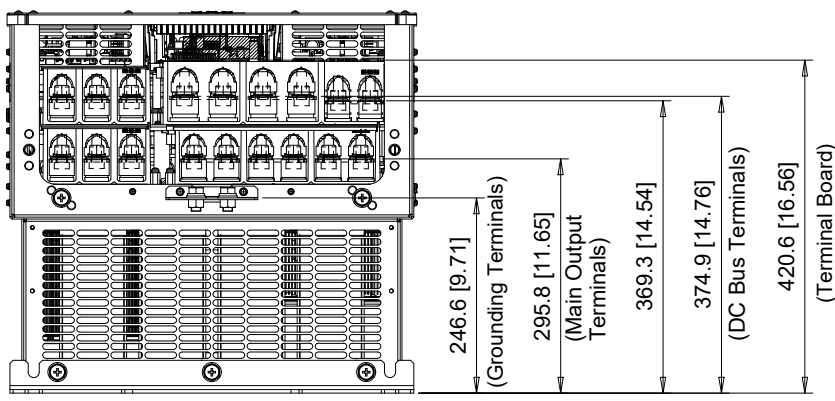
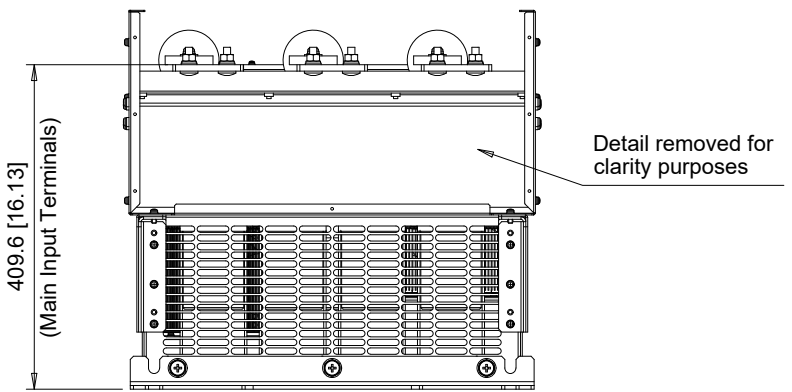
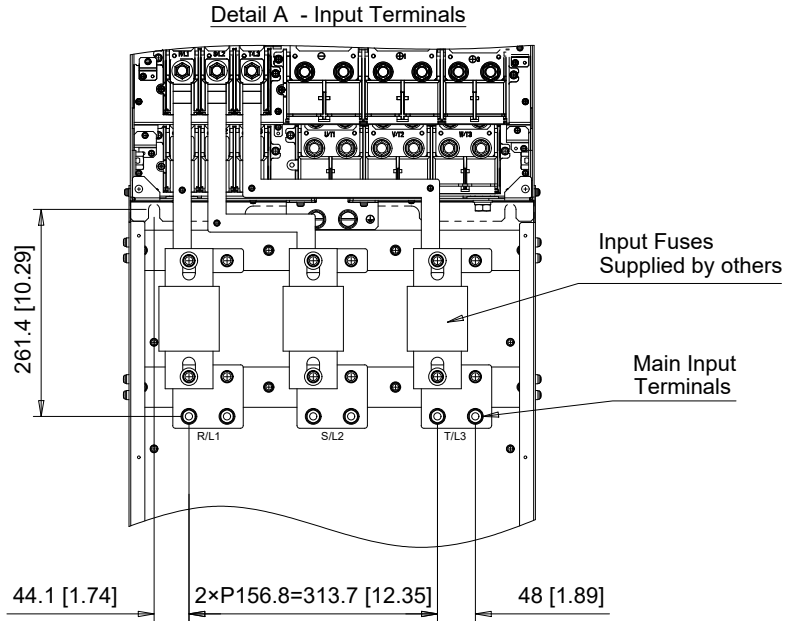
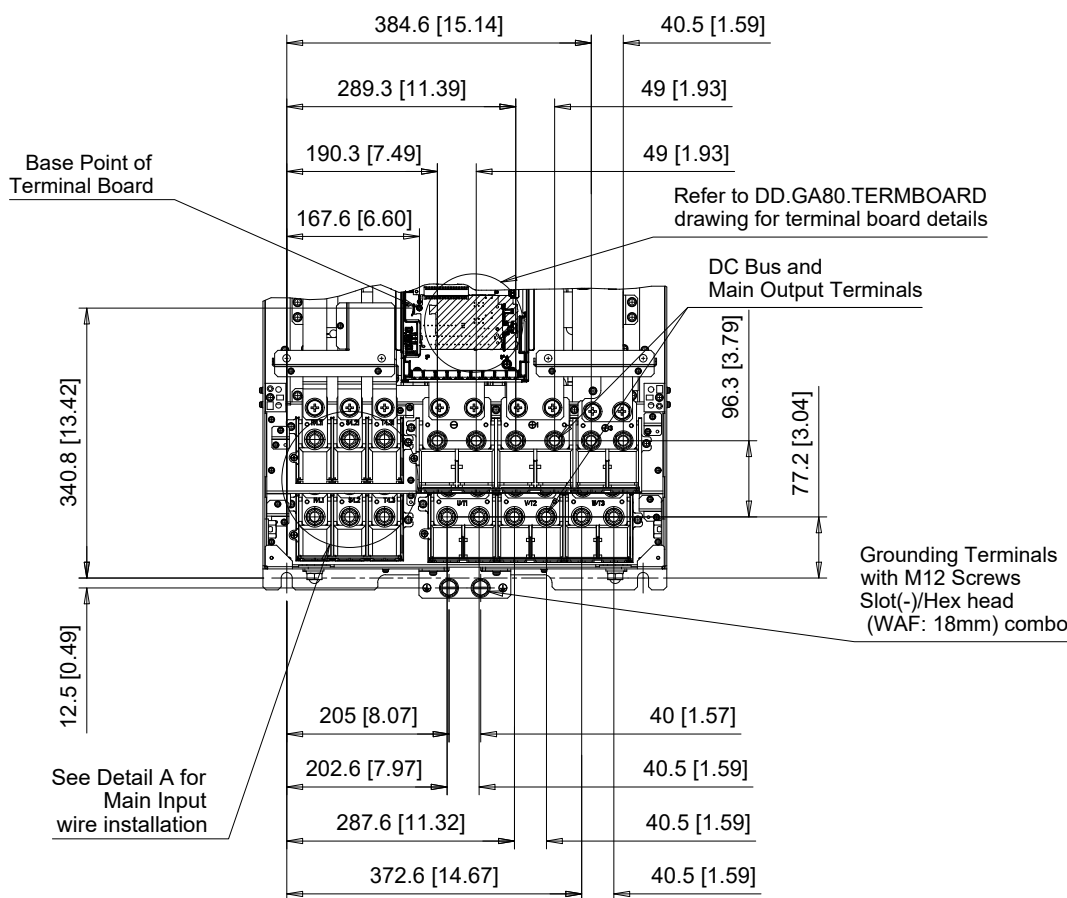
	DRWN. J. MATTAS	12-10-18
UNITS MM [IN]	CHKD. J. PIOTROWSKI	12-18-18
SCALE 1:20	TECH. L. UDDIN	1-8-19
	APRV. J. CAIRO	1-9-19

DRWN. J. MATTAS	12-10-18
CHKD. J. PIOTROWSKI	12-18-18
TECH. L. UDDIN	1-8-19
APRV. J. CAIRO	1-9-19

TITLE
GA800 DIMENSION DRAWING
FRAME SIZE 11
FUSE READY
NEMA TYPE 1 ENCLOSURE

SIZE A	PAGE 1 OF 3
DWG.NO. DD.GA80.FR11.N1.F	

REV
3



C/C: GA80□	TERMINAL SYMBOL	WIRE RANGE AWG (mm ²)	TERMINAL SCREW	CLAMPING TORQUE N.m. (lb.in.)
4477□□	R/L1, S/L2, T/L3	2/0 - 300 x 4P (70 - 150 x 4P)	M12	32 - 40 (283 - 354)
4568□□	U/T1, V/T2, W/T3, U/T1, V/T2, W/T3	2/0 - 300 x 2P (70 - 150 x 2P)	M12	35 (310)
4605□□				
4720□□	-, +1, -, +1	3/0 - 400 x 2P (95 - 205 x 2P)	M12	35 (310)
5382□□				
5412□□	+3, +3	2 - 4/0 x 2P (3 - 120 x 2P)	M12	35 (310)
5472□□	⊕	1/0 - 300 (50 - 150)	M12	32 - 40 (283 - 354)

□ Denotes A-Z
Note: Refer to applicable codes and standards for proper wire type and size.

3	CHANGED DWG NUMBER, REV WEIGHTS PREVIOUS NUMBER WAS DD.GA80.FR11.N1
2	ADDED 600V DRIVES
1	REVISED PANEL CUTOUT
0	INITIAL RELEASE



	UNITS MM [IN]
SCALE 1:10	

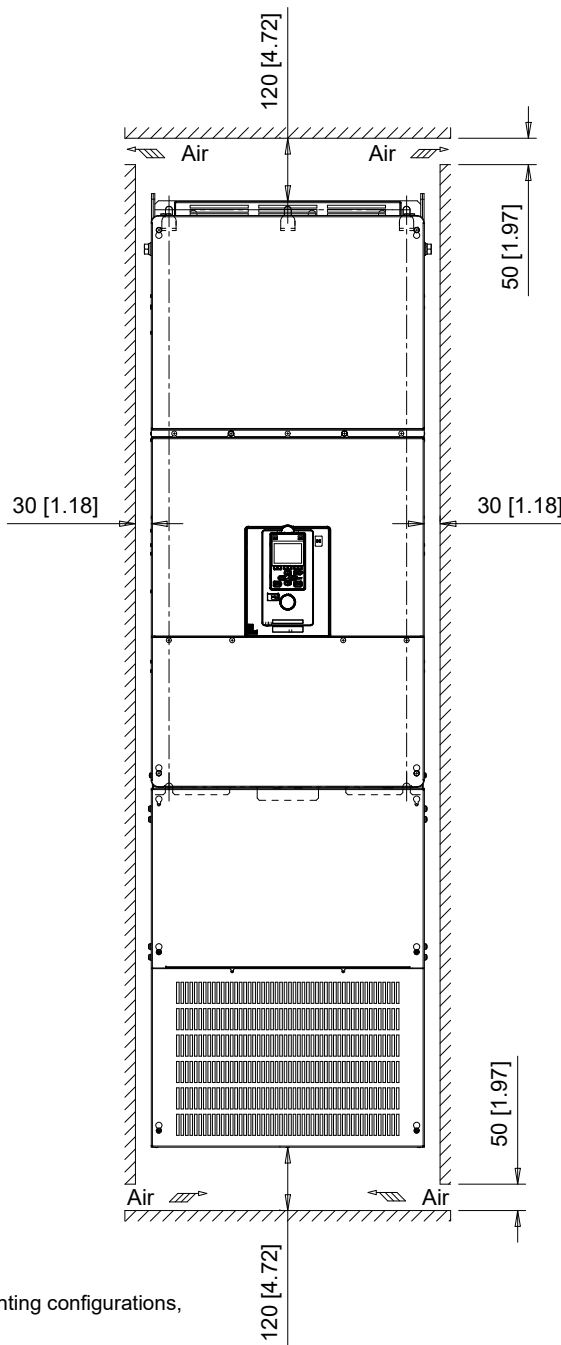
DRWN.	J. MATTAS	12-10-18
CHKD.	J. PIOTROWSKI	12-18-18
TECH.	L. UDDIN	1-8-19
APRV.	J. CAIRO	1-9-19

TITLE	GA800 DIMENSION DRAWING FRAME SIZE 11 FUSE READY NEMA TYPE 1 ENCLOSURE
-------	---

SIZE	A	PAGE	2 OF 3
DWG.NO.	DD.GA80.FR11.N1.F		

REV
3

Minimum Installation Clearances (Scale 1:15)



Note:
For alternate mounting configurations,
consult manual.

3	CHANGED DWG NUMBER, REV WEIGHTS PREVIOUS NUMBER WAS DD.GA80.FR11.N1
2	ADDED 600V DRIVES
1	REVISED PANEL CUTOUT
0	INITIAL RELEASE



	UNITS MM [IN]
	SCALE ABOVE

DRWN.	J. MATTAS	12-10-18
CHKD.	J. PIOTROWSKI	12-18-18
TECH.	L. UDDIN	1-8-19
APRV.	J. CAIRO	1-9-19

TITLE
GA800 DIMENSION DRAWING
FRAME SIZE 11
FUSE READY
NEMA TYPE 1 ENCLOSURE

SIZE	A	PAGE	3 OF 3
DWG.NO.	DD.GA80.FR11.N1.F		

REV
3