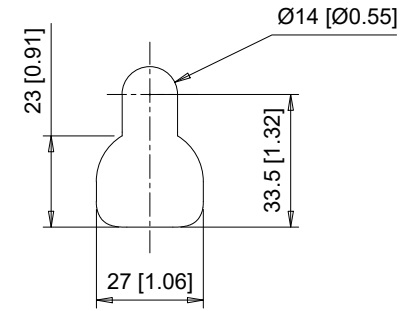
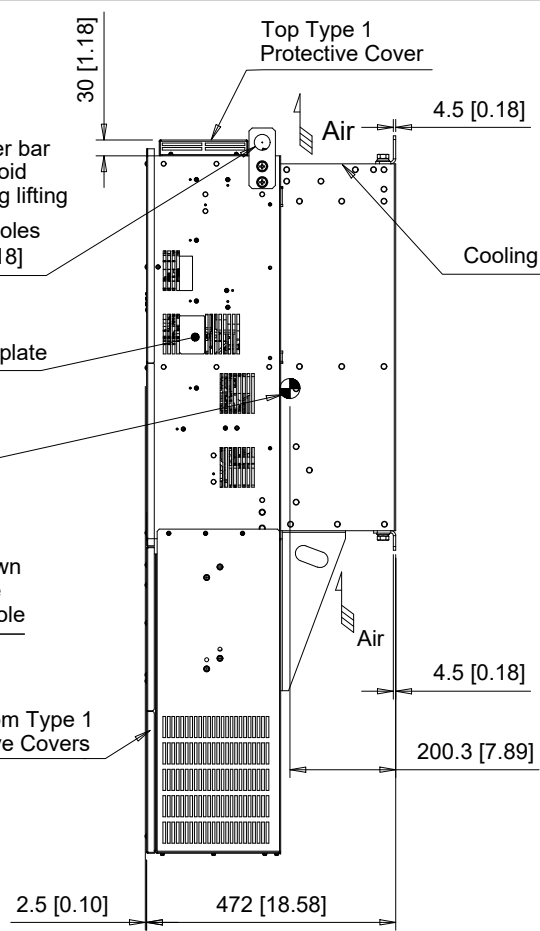


(4) Mounting Holes for M12 [1/2"] Screws. See Detail A for top mounting hole dimensions.

Note: Spreader bar required to avoid damage during lifting
(2)-Lifting Holes Ø30 [Ø1.18]

Center of Gravity
Note: Dimensions shown are measured from the bottom left mounting hole



Detail A
Top mounting hole dimensions
Scale 1:2

The dimensions shown are for an IP20 Type Drive that has been converted to a NEMA Type 1 Drive by adding the parts from NEMA 1 Kit part number UUX001700

C/C: GA80□	INPUT VOLTAGE 3-PHASE (VAC)	WEIGHT Kg (lb)	COOLING FANS
2360□□□	200 TO 240	134 (295)	3
2415□□□		149 (328)	3
4371□□□	380 TO 480	149 (328)	2
4414□□□		156 (344)	3
5192□□□	500 TO 600	134 (295)	2
5242□□□		134 (295)	2
5289□□□		153 (337)	3

□ denotes A-Z

2	ADD MODELS, REV DWG NUMBER AND WEIGHTS PREVIOUS NUMBER WAS DD.GA80.FR10B.N1
1	ADDED 600V DRIVES
0	INITIAL RELEASE

YASKAWA

UNITS MM [IN]
SCALE 1:15

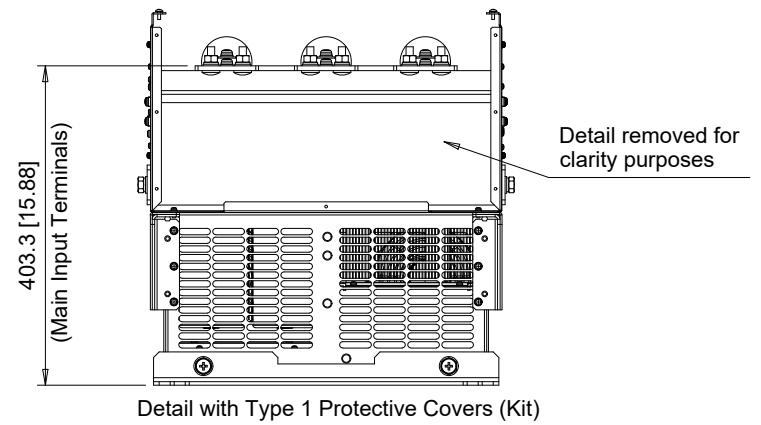
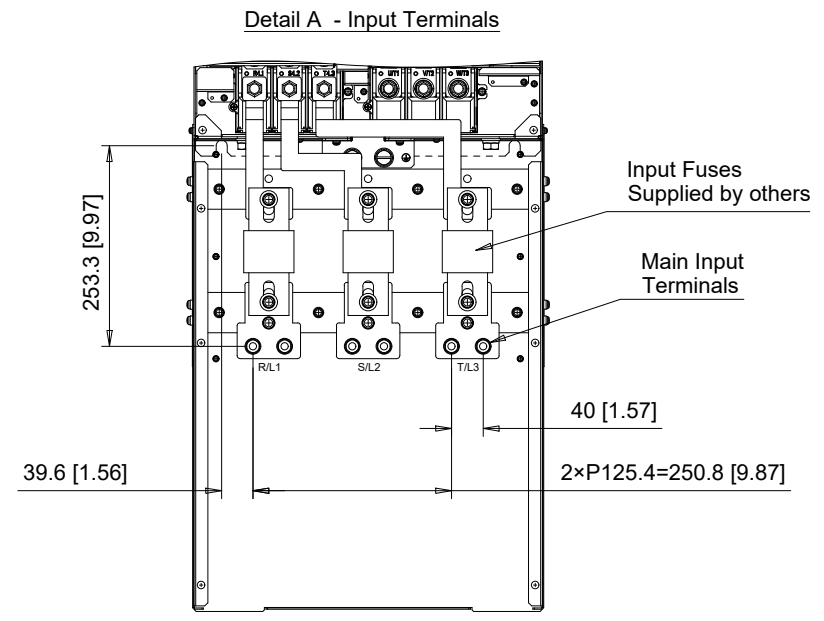
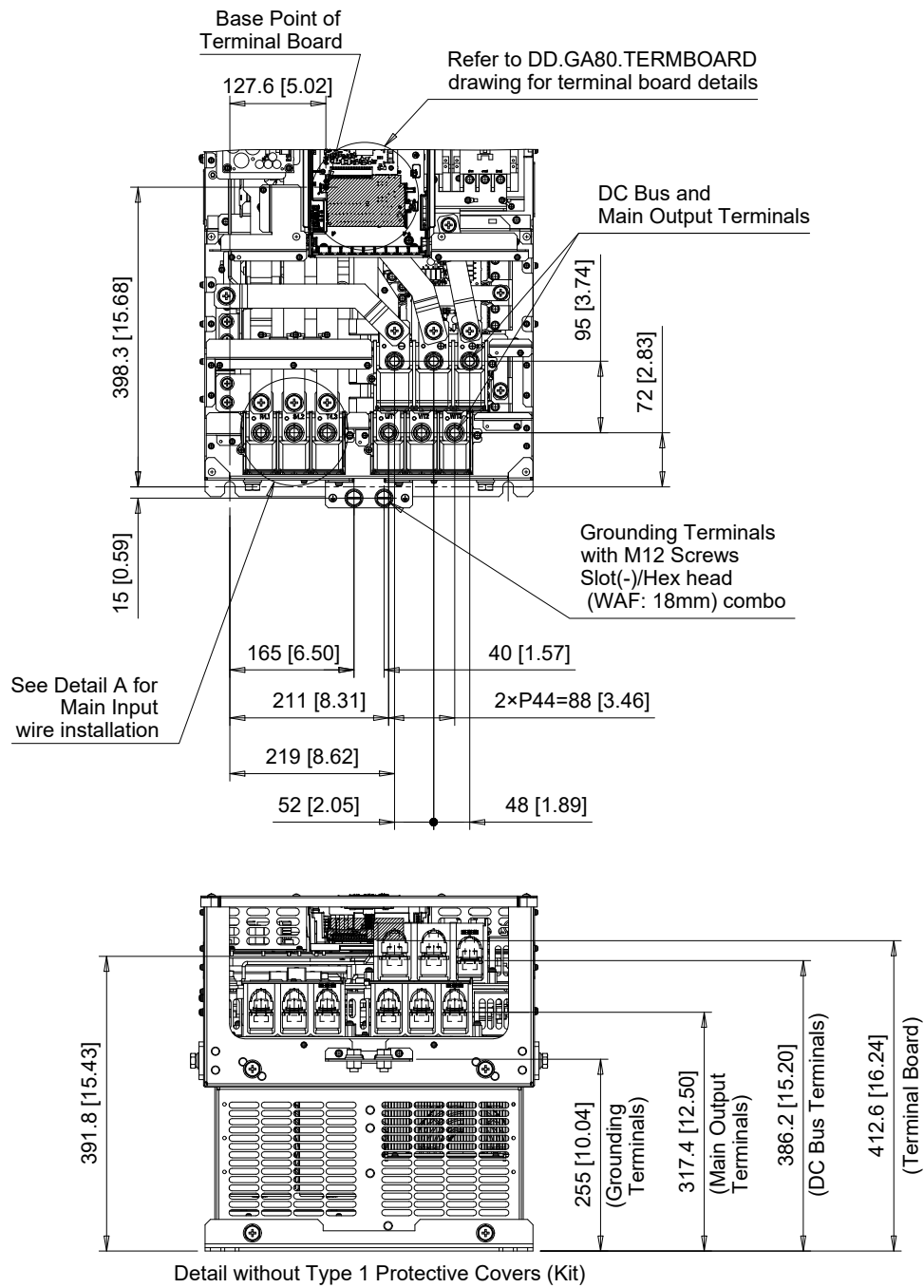
DRWN.	J. MATTAS	12-10-18
CHKD.	J. PIOTROWSKI	12-18-18
TECH.	L. UDDIN	1-8-19
APRV.	J. CAIRO	1-9-19

TITLE
GA800 DIMENSION DRAWING
FRAME SIZE 10
FUSE READY
NEMA TYPE 1 ENCLOSURE

SIZE	A	PAGE	1 OF 4
DWG.NO.	DD.GA80.FR10.N1.F		

REV
2

Terminal and Wiring Information for GA80□2360, GA80□4371, GA80□4414, GA80□5192, GA80□5242 and GA80□5289



C/C: GA80□	TERMINAL SYMBOL	WIRE RANGE AWG (mm ²)	TERMINAL SCREW	CLAMPING TORQUE N.m. (lb.in.)
2360□□□	R/L1, S/L2, T/L3	2/0 - 300 x 2P (70 - 150 x 2P)	M12	35 (310)
4371□□□	U/T1, V/T2, W/T3	2/0 - 300 x 2P (70 - 150 x 2P)	M12	35 (310)
4414□□□	-, +1, +3	4/0 - 400 x 2P (120 - 205 x 2P)	M12	35 (310)
5192□□□	⊕	1 - 350 (120 - 240)	M12	32 - 40 (283 - 354)
5242□□□				
5289□□□				

□ Denotes A-Z
Note: Refer to applicable codes and standards for proper wire type and size.

2	ADD MODELS, REV DWG NUMBER AND WEIGHTS PREVIOUS NUMBER WAS DD.GA80.FR10B.N1
1	ADDED 600V DRIVES
0	INITIAL RELEASE



UNITS MM [IN]
SCALE 1:10

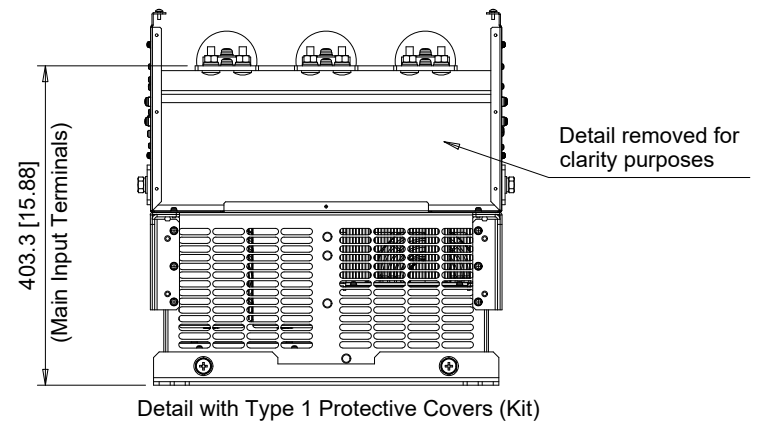
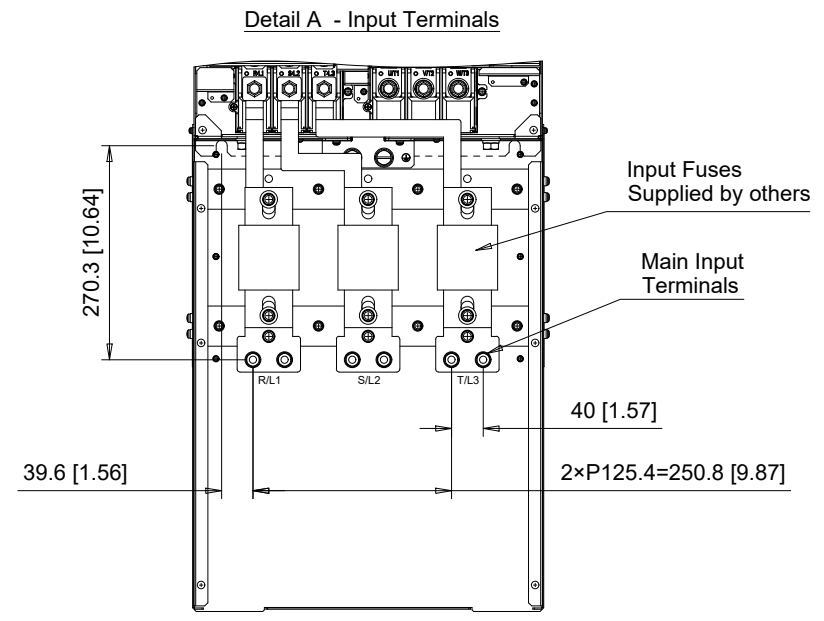
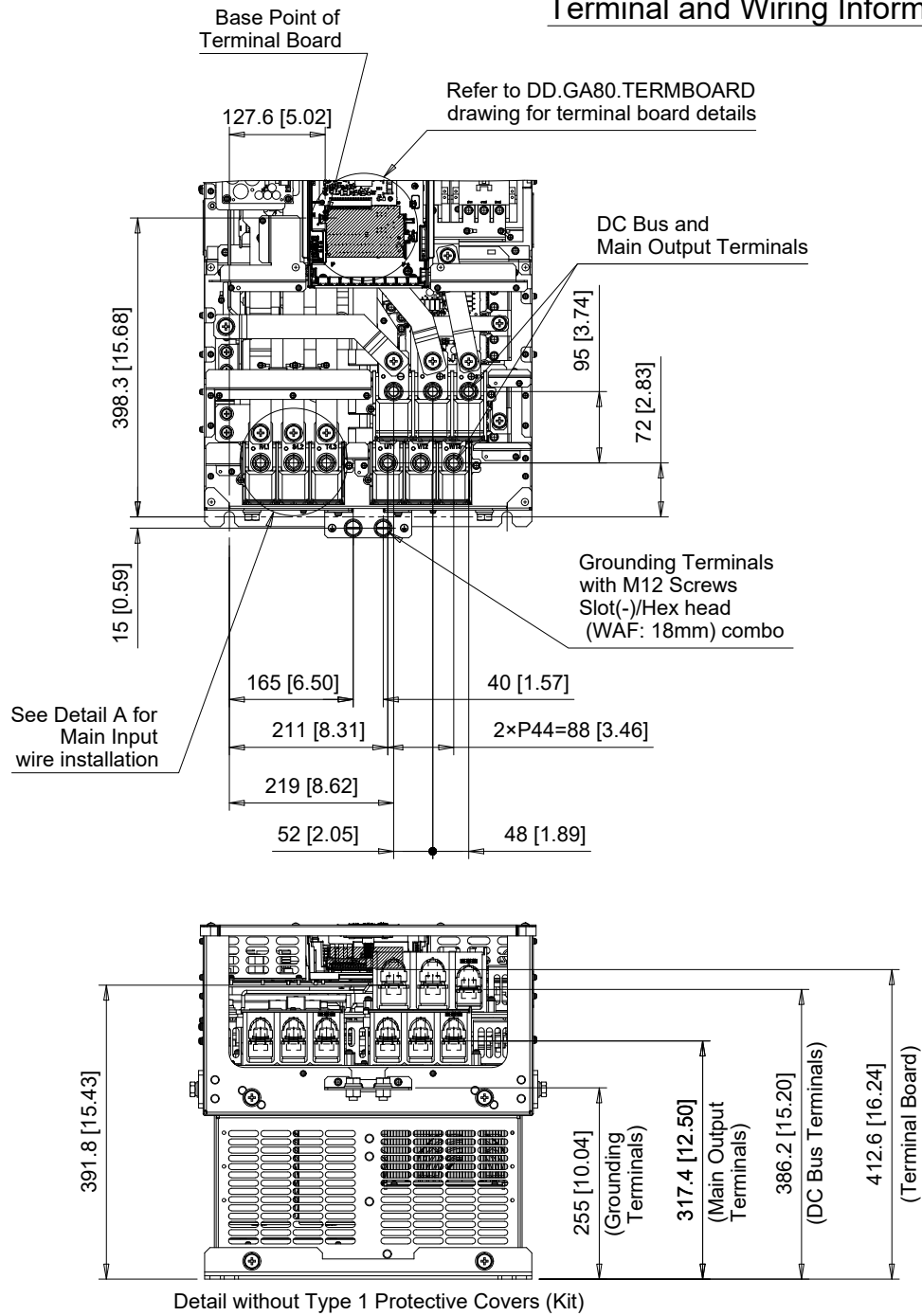
DRWN.	J. MATTAS	12-10-18
CHKD.	J. PIOTROWSKI	12-18-18
TECH.	L. UDDIN	1-8-19
APRV.	J. CAIRO	1-9-19

TITLE
GA800 DIMENSION DRAWING
FRAME SIZE 10
FUSE READY
NEMA TYPE 1 ENCLOSURE

SIZE	A	PAGE	2 OF 4
DWG.NO.	DD.GA80.FR10.N1.F		

REV
2

Terminal and Wiring Information for GA80□2415



C/C:	TERMINAL SYMBOL	WIRE RANGE AWG (mm ²)	TERMINAL SCREW	CLAMPING TORQUE N.m. (lb.in.)
GA80□	R/L1, S/L2, T/L3	2/0 - 300 x 2P (70 - 150 x 2P)	M12	35 (310)
2415□□□	U/T1, V/T2, W/T3	2/0 - 300 x 2P (70 - 150 x 2P)	M12	35 (310)
	-, +1, +3	4/0 - 400 x 2P (120 - 205 x 2P)	M12	35 (310)
	⊕	1 - 350 (120 - 240)	M12	32 - 40 (283 - 354)

□ Denotes A-Z
 Note: Refer to applicable codes and standards for proper wire type and size.

2	ADD MODELS, REV DWG NUMBER AND WEIGHTS PREVIOUS NUMBER WAS DD.GA80.FR10B.N1
1	ADDED 600V DRIVES
0	INITIAL RELEASE



UNITS MM [IN]
 SCALE 1:10

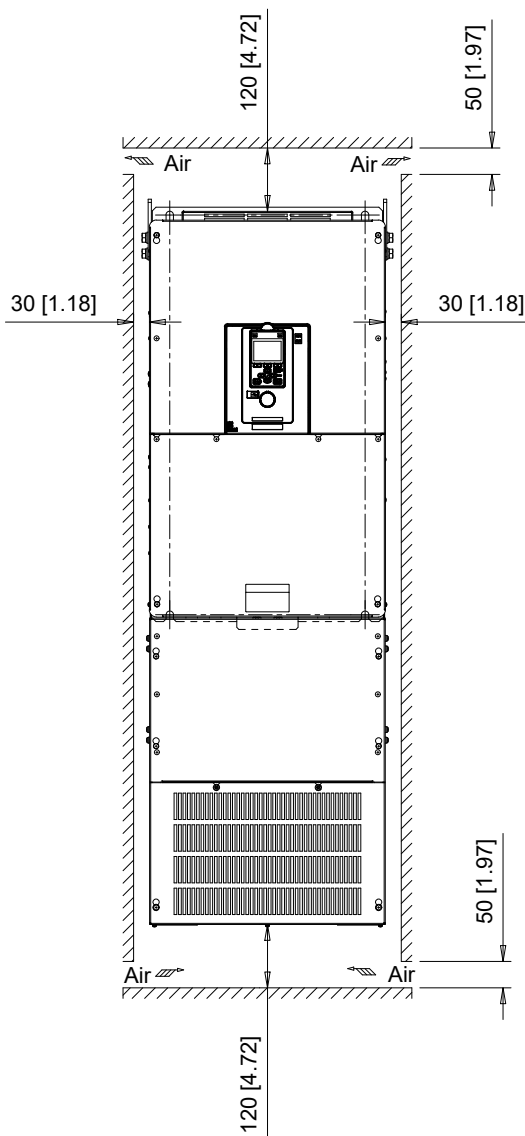
DRWN.	J. MATTAS	12-10-18
CHKD.	J. PIOTROWSKI	12-18-18
TECH.	L. UDDIN	1-8-19
APRV.	J. CAIRO	1-9-19

TITLE
 GA800 DIMENSION DRAWING
 FRAME SIZE 10
 FUSE READY
 NEMA TYPE 1 ENCLOSURE

SIZE	A	PAGE	3 OF 4
DWG.NO.	DD.GA80.FR10.N1.F		

REV
 2

Minimum Installation Clearances (Scale 1:15)



Note:
For alternate mounting configurations, consult manual.

2	ADD MODELS. REV DWG NUMBER AND WEIGHTS PREVIOUS NUMBER WAS DD.GA80.FR10B.N1
1	ADDED 600V DRIVES
0	INITIAL RELEASE

YASKAWA

UNITS MM [IN]
SCALE ABOVE

DRWN.	J. MATTAS	12-10-18
CHKD.	J. PIOTROWSKI	12-18-18
TECH.	L. UDDIN	1-8-19
APRV.	J. CAIRO	1-9-19

TITLE	GA800 DIMENSION DRAWING
	FRAME SIZE 10
	FUSE READY
	NEMA TYPE 1 ENCLOSURE

SIZE	A	PAGE	4 OF 4
DWG.NO.	DD.GA80.FR10.N1.F		

REV	2
-----	---