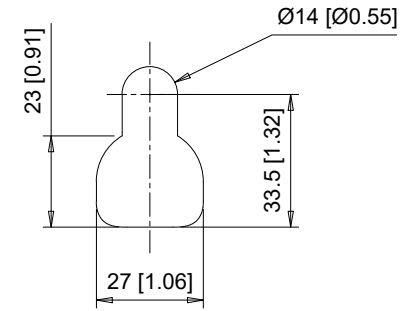
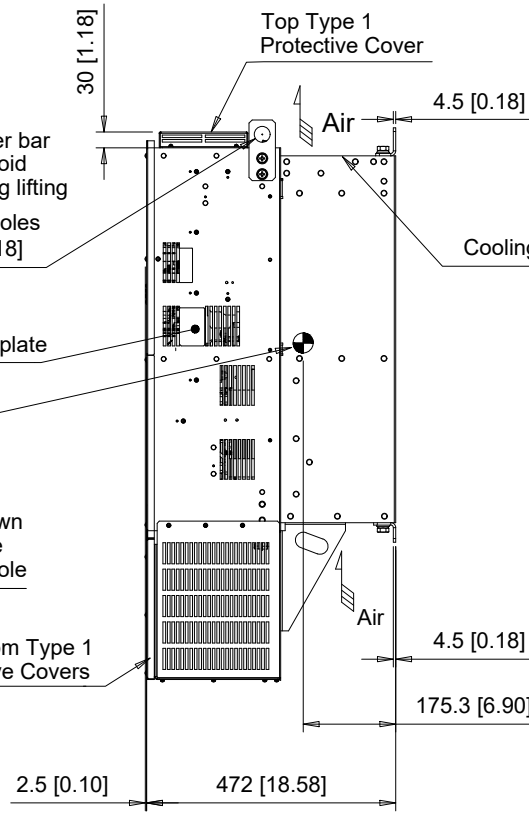
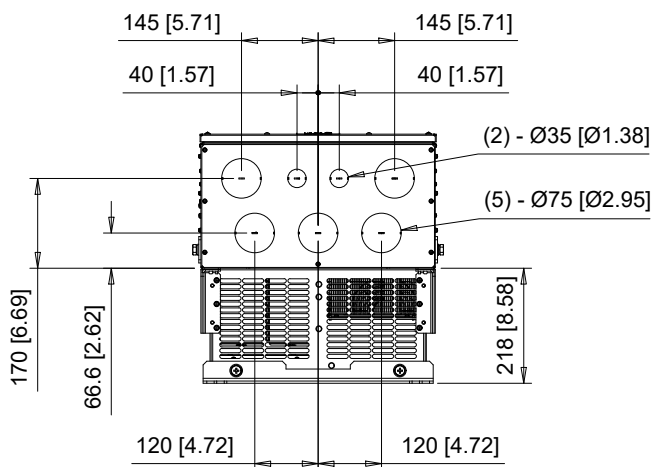


(4) Mounting Holes for M12 [1/2"] Screws. See Detail A for top mounting hole dimensions.

Note: Spreader bar required to avoid damage during lifting  
(2)-Lifting Holes Ø30 [Ø1.18]



**Detail A**  
Top mounting hole dimensions  
Scale 1:2



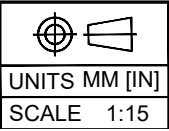
The dimensions shown are for an IP20 Type Drive that has been converted to a NEMA Type 1 Drive by adding the parts from NEMA 1 Kit part number 900-192-121-010

| C/C:<br>GA80□ | INPUT VOLTAGE<br>3-PHASE (VAC) | WEIGHT<br>Kg (lb) | COOLING<br>FANS |
|---------------|--------------------------------|-------------------|-----------------|
| 2360□□□       | 200 TO 240                     | 113 (249)         | 3               |
| 2415□□□       |                                | 128 (282)         | 3               |

□ denotes A-Z

|   |  |
|---|--|
| 2 | CHANGED DRAWING NUMBER<br>PREVIOUS NUMBER WAS DD.GA80.FR10A.N1 |
| 1 | REVISED KIT PART NUMBER  |
| 0 | INITIAL RELEASE  |

**YASKAWA**

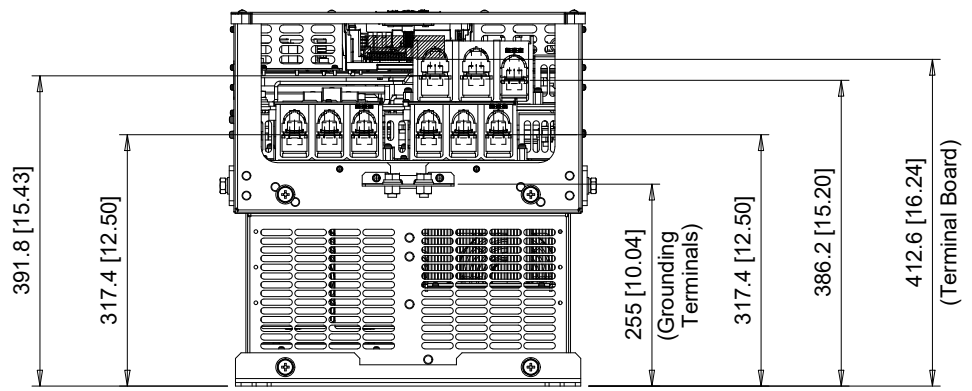
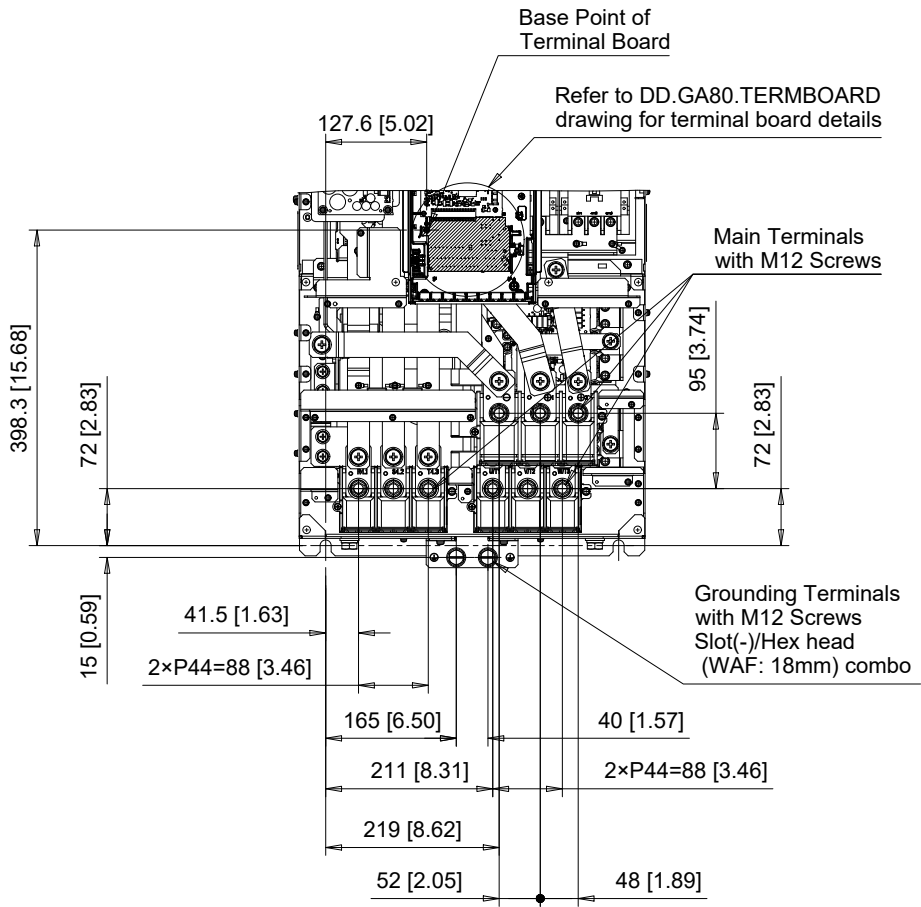


|       |               |          |
|-------|---------------|----------|
| DRWN. | J. MATTAS     | 11-20-18 |
| CHKD. | J. PIOTROWSKI | 12-18-18 |
| TECH. | L. UDDIN      | 1-8-19   |
| APRV. | J. CAIRO      | 1-9-19   |

TITLE  
GA800 DIMENSION DRAWING  
FRAME SIZE 10  
NEMA TYPE 1 ENCLOSURE

|         |                 |      |        |
|---------|-----------------|------|--------|
| SIZE    | A               | PAGE | 1 OF 3 |
| DWG.NO. | DD.GA80.FR10.N1 |      |        |

REV  
2



| C/C:<br>GA80□ | TERMINAL<br>SYMBOL | WIRE RANGE<br>AWG (mm <sup>2</sup> ) | TERMINAL<br>SCREW | CLAMPING TORQUE<br>N.m. (lb.in.) |
|---------------|--------------------|--------------------------------------|-------------------|----------------------------------|
|               | R/L1, S/L2, T/L3   | 2/0 - 300 x 2P (70 - 150 x 2P)       | M12               | 35 (310)                         |
| 2360□□□       | U/T1, V/T2, W/T3   | 2/0 - 300 x 2P (70 - 150 x 2P)       | M12               | 35 (310)                         |
| 2415□□□       | -, +1, +3          | 4/0 - 400 x 2P (120 - 205 x 2P)      | M12               | 35 (310)                         |
|               | ⊕                  | 1 - 350 (120 - 240)                  | M12               | 32 - 40 (283 - 354)              |

□ Denotes A-Z  
 Note: Refer to applicable codes and standards for proper wire type and size.

|   |  |
|---|--|
| 2 | CHANGED DRAWING NUMBER<br>PREVIOUS NUMBER WAS DD.GA80.FR10A.N1 |
| 1 | REVISED KIT PART NUMBER  |
| 0 | INITIAL RELEASE  |

**YASKAWA**

  
 UNITS MM [IN]  
 SCALE 1:10

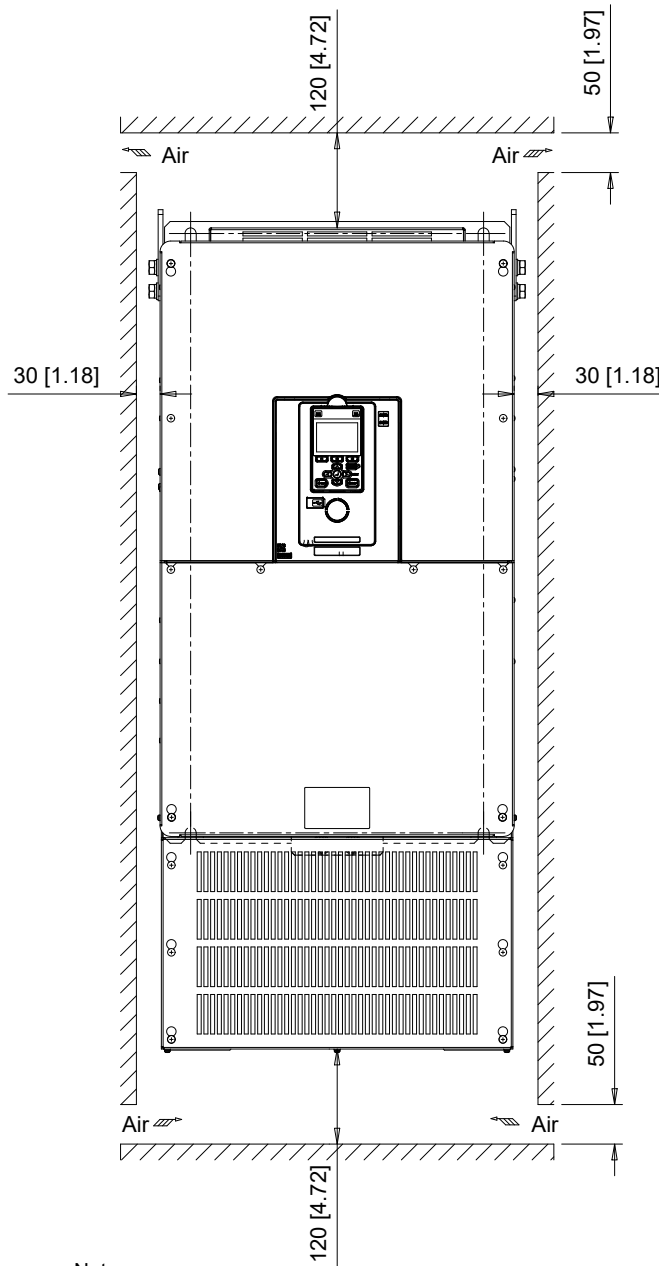
|       |               |          |
|-------|---------------|----------|
| DRWN. | J. MATTAS     | 11-20-18 |
| CHKD. | J. PIOTROWSKI | 12-18-18 |
| TECH. | L. UDDIN      | 1-8-19   |
| APRV. | J. CAIRO      | 1-9-19   |

TITLE  
 GA800 DIMENSION DRAWING  
 FRAME SIZE 10  
 NEMA TYPE 1 ENCLOSURE

|         |   |                 |        |
|---------|---|-----------------|--------|
| SIZE    | A | PAGE            | 2 OF 3 |
| DWG.NO. |   | DD.GA80.FR10.N1 |        |

REV  
 2

Minimum Installation Clearances (Scale 1:10)



Note:  
For alternate mounting configurations, consult manual.

|   |  |
|---|--|
| 2 | CHANGED DRAWING NUMBER<br>PREVIOUS NUMBER WAS DD.GA80.FR10A.N1 |
| 1 | REVISED KIT PART NUMBER  |
| 0 | INITIAL RELEASE  |

**YASKAWA**

|               |
|---------------|
|               |
| UNITS MM [IN] |
| SCALE ABOVE   |

|       |               |          |
|-------|---------------|----------|
| DRWN. | J. MATTAS     | 11-20-18 |
| CHKD. | J. PIOTROWSKI | 12-18-18 |
| TECH. | L. UDDIN      | 1-8-19   |
| APRV. | J. CAIRO      | 1-9-19   |

|       |   |
|-------|---|
| TITLE | GA800 DIMENSION DRAWING<br>FRAME SIZE 10<br>NEMA TYPE 1 ENCLOSURE |
|-------|---|

|         |                 |      |        |
|---------|-----------------|------|--------|
| SIZE    | A               | PAGE | 3 OF 3 |
| DWG.NO. | DD.GA80.FR10.N1 |      |        |

|     |   |
|-----|---|
| REV | 2 |
|-----|---|